



Innovating Epigenetic Solutions

USER MANUAL

# Bioruptor<sup>®</sup> Pico

## Sonication System

Cat. No. B01060001 - B01060002- B01060003



# Guarantee

## Limited one year global warranty

Diagenode guarantees all products from any manufacturing defects as we rigorously test all products to meet strict quality standards. Diagenode warrants that all standard components of its instruments will be free of defects in materials and workmanship for a period of one (1) year from the date that the warranty period begins, unless the original quotation or accompanying documentation states a different warranty period. All warranty periods begin on the date of delivery and apply only to the first purchaser of the product. If a manufacturing defect arises and a valid claim is received within the warranty period, Diagenode, at its discretion, will repair or replace the product in accordance with the warranty terms and conditions stated herein. In case of repair or replacement of a product under warranty, Diagenode will cover the expenses to return the repaired or replacement product.

This warranty covers only manufacturing defects and does not cover any damage caused by misuse, lack of compliance to recommendations stated in the manual, neglect, accidents, abrasion, or exposure to extreme temperatures, chemical solvents, or acids. We strongly recommend that maintenance or repairs of Diagenode's products are performed by our approved Diagenode service center. Improper or incorrectly performed maintenance or repairs will void the warranty.

---

## Technical assistance & ordering information

### Diagenode s.a. BELGIUM | EUROPE

LIEGE SCIENCE PARK  
Rue Bois Saint-Jean, 3  
4102 Seraing (Ougrée) - Belgium  
Tel: +32 4 364 20 50  
Fax: +32 4 364 20 51  
techsupport@diagenode.com  
orders@diagenode.com

### Diagenode Inc. USA | NORTH AMERICA

400 Morris Avenue, Suite #101  
Denville, NJ 07834 - USA  
Tel: +1 862 209-4680  
Fax: +1 862 209-4681  
techsupport.na@diagenode.com  
orders.na@diagenode.com

For a complete listing of Diagenode's international distributors visit: [www.diagenode.com/en/support/distributors.php](http://www.diagenode.com/en/support/distributors.php)  
For the rest of the world, please contact Diagenode s.a.

# Contents

<b>Critical steps for maintenance and efficient shearing</b> .....	<b>4</b>
<b>Introduction</b> .....	<b>5</b>
<b>Bioruptor® Pico technical specifications</b> .....	<b>6</b>
<b>Getting to know your Bioruptor® Pico system</b> .....	<b>7</b>
Bioruptor® Pico components overview .....	7
Bioruptor® Pico <i>Water Cooler</i> .....	7
Single cycle valve for Bioruptor® Pico .....	8
Sonication bath .....	8
Motorized lid .....	9
Tube holders .....	9
<b>Equipment installation</b> .....	<b>10</b>
Installation overview .....	10
Installing the Bioruptor® Pico system with <i>Water Cooler</i> .....	11
<b>Controlling the sonication</b> .....	<b>14</b>
<b>Tube holders and tubes</b> .....	<b>16</b>
<b>Standard protocol for DNA shearing</b> .....	<b>17</b>
Operating conditions .....	17
Important comments about DNA shearing .....	20
<b>Small volume DNA shearing for Bioruptor® Pico</b> .....	<b>22</b>
Operating conditions .....	22
Important comments about DNA shearing .....	25
Consistent and highly reproducible chromatin shearing with the Bioruptor® Pico .....	25
<b>Ordering information</b> .....	<b>Back Cover</b>

# Critical steps for maintenance and efficient shearing

## General warnings



- **DO NOT** turn on the instrument without water.
- **DO NOT** tilt the Bioruptor® Pico. To change the water, use either the plastic pump or a beaker (be careful not to scratch the bottom of the sonication bath).

## Sonication bath levels

- The sonication bath must be filled with **distilled water** to the fill line. Fill line replacement stickers can be obtained by contacting Diagenode.
- **At least once per month.**

## Sonication bath temperature

- Optimal temperature for sonication is 4°C. Sample temperature should not exceed 8°C.
- The *Water Cooler* (New Cat. No. B0201002, 230V; B0201003, 115V; B0201004, 100V; Old Cat. No. BioAcc-Cool) has to be used in combination with the Single Cycle Valve for *Water Cooler* (Cat. No. B02020004) to guarantee the automatic temperature control of the sonication bath during the entire sonication process.

## Magnetic ultrasound emitter maintenance

- The ultrasound waves are created from a series of magnets that are attached to the water tank. This system is very sensitive to the heat generated during a run.
- Do not exceed 1 hour of total sonication per run. It is critical that the machine is allowed to cool at least 20 minutes between runs. Damage resulting from non compliance to manual instructions will void the warranty and shorten the lifespan of the machine.
- Ultrasound emitters can be damaged by tilting or jarring the machine. Exercise care if moving water tank.

## Validated tubes for the Bioruptor® Pico

- DNA shearing: 0.1 ml (Cat.No. C30010015) and 0.65 ml (New Cat. No. C30010011; Old Cat. No. WA-005-0500) Bioruptor® Microtubes for DNA shearing.
- Chromatin shearing: 0.1 ml (Cat. No. C30010015) and 1.5 ml (Cat.No. C30010016) Bioruptor® Microtubes and 15 ml (Cat.No. C01020031) Bioruptor® Tubes & sonication beads.

## Fitting 0.1, 0.65, 1.5, or 15 ml tubes in the tube holder

1. Place the tubes in the corresponding tube holder (0.1 ml tube holder & tube adaptor - Cat. No. B01200041, 0.65 ml tube holder - Cat. No. B01200043, 1.5 ml tube holder - Cat. No. B01200040 or 15 ml sonication accessories - Cat. No. B01200016). Never leave empty spaces in the tube holder. Fill the empty spaces with tubes containing the same volume of water. Screw the lid on the tube holder without over-tightening it.
2. Carefully place the tube holder on the holding plate.
3. During sonication, samples must remain at the bottom of the tube. If needed, briefly centrifuge samples during sonication after pausing the run.

# Introduction

Diagenode's Bioruptor® Pico uses a gentle method of sonication to retain the integrity of DNA and/or biological complexes, including chromatin, protein-protein binding, protein-DNA complexes and other biochemical and biological assay systems. The Bioruptor® Pico sonication system uses a sonication bath to generate indirect sonication waves, which emanate from an ultrasound element below the water tank. Because the system is gentler than other sonicators, the Bioruptor® Pico produces better and more consistent results than with harsher sonication methods. Up to 12 closed tubes can be sonicated in parallel and the continuous rotation of tubes allows even distribution of the energy for efficient sonication. The Bioruptor® Pico enables automation of sonication, guaranteeing higher reproducibility of results.

## The effect of ultrasound on biological sample

The Bioruptor® Pico sonication system uses ultrasound to create focused mechanical stress to shear chromatin or DNA. Ultrasound waves pass through the sample expanding and contracting the liquid. During expansion, negative pressures pull the molecules away from one another to form a cavity or bubble. This process is called cavitation. The bubble continues to absorb energy until it can no longer sustain itself and implodes. This produces intense focused shearing forces, that disperse and break biomolecules. The fragmentation of chromatin or DNA takes place as a consequence of this mechanical stress or shear.

With the Bioruptor® Pico, the entire volume of water present in the sonication bath is exposed to ultrasound, allowing all the samples to be efficiently sonicated in parallel (Figure 1).

## Use of Bioruptor® Pico by pregnant women

Exposure to 20-60 kHz sound waves has not been shown to be harmful to human health. However, we would recommend avoiding unnecessary exposure. Diagenode recommends that pregnant women should not be exposed to 20-60 kHz wave lengths for a long period of time.

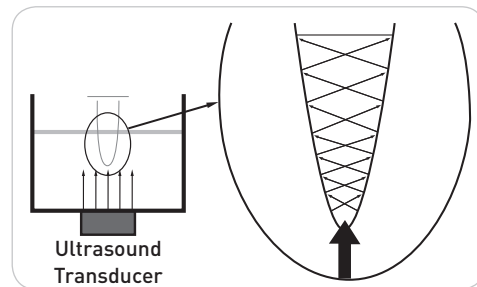


Fig 1. Propagation in 0.65 ml tubes

# Bioruptor® Pico technical specifications

Bioruptor® Pico	
Power supply	100-230V, 50/60Hz, 2.1A (EU) / 4.2A (US)
Ultrasonic wave frequency	20-60 kHz
Ultrasonic wave output power	25-210 W
Sonication unit dimensions	350 (W) x 245 (D) x 280 (H) mm
Sonication bath volume	750 ml
Timer	Digital
Possibility to control water flow via connector kit for <i>water cooler</i>	Yes
Tube holder	Available for 0.1, 0.65, 1.5 or 15 ml tubes
Total weight	7,90 kg
Number of samples to be processed simultaneously	0.1 ml tubes – 12 0.65 ml tubes – 12 1.5 ml tubes – 6 15 ml tubes – 6

# Getting to know your Bioruptor® Pico system

## Bioruptor® Pico components overview



Sonication unit



Power cable (EU)



Power cable (US)



Tube holder

## Water Cooler

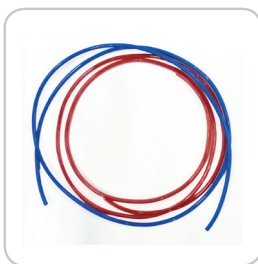
To learn more, please visit [www.diazenode.com](http://www.diazenode.com)



## Single cycle valve for Bioruptor® Pico



**Single cycle Valve**



**Tubing**



**Connector cable**

To learn more, please visit [www.diagenode.com](http://www.diagenode.com)

## Sonication bath

The sonication bath is a critical component of the instrument. The generators below the tank produce ultrasonic waves which are then transferred through water. The sonication bath requires special handling and care as described below.

### Handling

The sonication unit must remain upright at all times, especially when moved. Tilting the sonication unit or handling roughly may damage the ultrasound emitter component, resulting in a substantial drop in sonication efficiency. If transportation of the apparatus is required after initial set-up, it is imperative to keep the sonication unit at a right angle to the ground during the transport at all times.

### Water level and quality

The level of the water has been optimized and should always reach the red line (sticker on the wall of the tank). **Distilled water** should be used to fill the tank. Replacement stickers can be obtained from Diagenode.



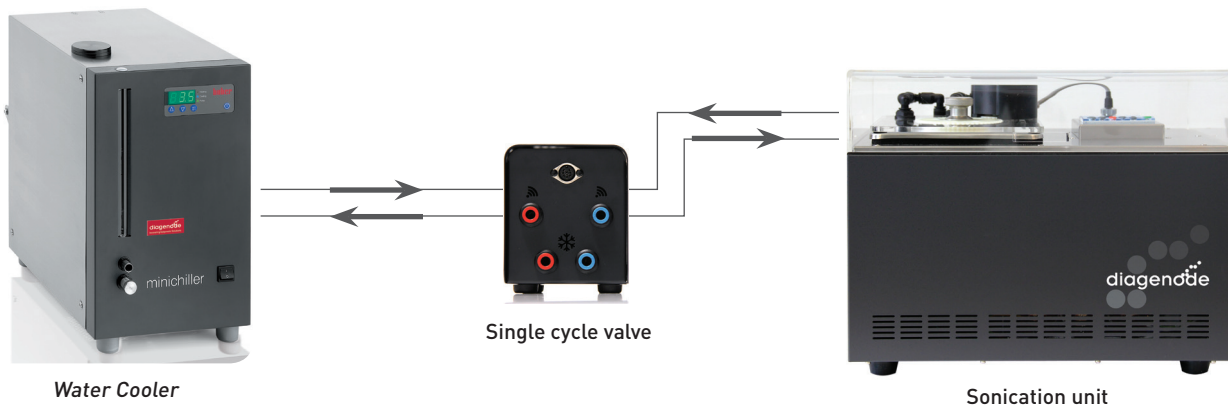
### Water temperature

The water in the sonication bath must be kept at **4°C**. Ultrasonic waves produced by the Bioruptor® Pico generate heat. Drop off in sonication efficiency will occur above 8°C. To ensure preservation of the samples and to prevent damage to the instrument, it is necessary to start the sonication process with cold water and to keep it at 4°C during the sonication process.



## Automatic temperature control

The *Water Cooler* (New Cat. No. B0201002, 230V; B02010003, 115V; B02010004, 100V; Old Cat. No. BioAcc-Cool) has to be used in combination with the Single Cycle Valve for Bioruptor® Pico (Cat. No. B02020004) to guarantee the automatic temperature control of the sonication bath during the entire sonication process (Figure 2). The cooling system features two pumps and produces a regular water flow to maintain a constant water level in the tank. The regulating valve (Single Cycle Valve for Bioruptor® Pico) ensures that water will only be replaced during the off cycle to avoid any interference between the water flow and the sonication process.



**Fig.** Setup of the Bioruptor® Pico system including *Water Cooler* and Single Cycle Valve for Bioruptor® Pico.

## Motorized lid

The motorized lid, along with the gear plate accessory, keeps the sample tubes in constant rotation and ensures optimal position in the sonication bath during sonication. When in motion, do not hamper the rotation of the white gear plate. Avoid the immersion of the motor into the water. Do not heat the white plastic as it will warp.

## Tube holders

Several sizes of tubes can be used with the Bioruptor® Pico. The minimum and maximum sample volume to be used with each tube is given in the table below.

Tube size	Minimum	Maximum
0.1 ml	5 or 10 µl	50 µl
0.2 ml	20 µl	100 µl
0.65 ml	100 µl	100 µl
1.5 ml	100 µl	300 µl
15 ml	500 µl	2 ml



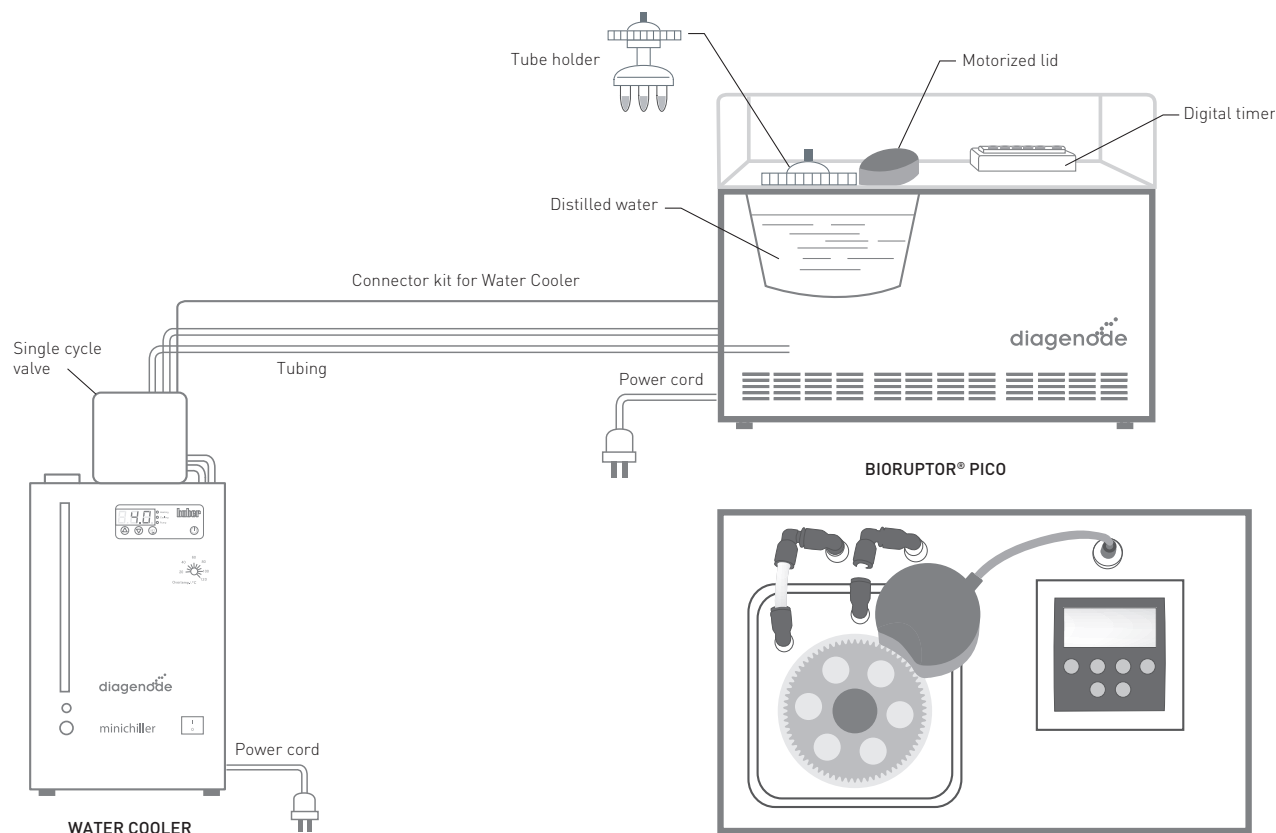
# Equipment installation

The following pages contain information on installing your particular Bioruptor® Pico model. This equipment must only be installed by personnel after reading this section. Consider all hazards even though no particular hazards have been identified during installation. Before starting installation work, turn the main switch off (front side) and secure the unit against being re-energized. No special tools are required. One square meter is needed to set-up the Bioruptor® Pico.

## Devices are designed to be safe under the following conditions:

- Indoor use
- Altitude up to 2,000 meters
- Operating external temperature 15°C to 25°C (do not install the Bioruptor in a cold room)
- Maximum relative humidity 80%
- Transient overvoltage typically present on the MAINS supply
- Degree of protection: IP20
- Power plug must be grounded
- POLLUTION DEGREE 2 (Normally only non-conductive pollution occurs. However, occasionally a temporary conductivity caused by condensation is expected)
- Never install this equipment in a place where environmental conditions and warnings mentioned above are infringed

## Installation overview



**Fig.** Schematic installation overview of the Bioruptor® Pico System in combination with the Water Cooler and the Single Cycle Valve kit.

## Installing the Bioruptor® Pico system with *Water Cooler*

Before starting the installation, turn the main switches off and make sure that the unit is not plugged into an electrical outlet.

1. Open the boxes and unpack all components



Water cooler



Bioruptor® Pico



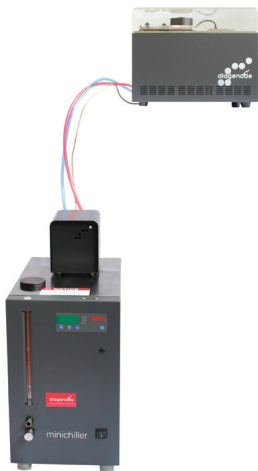
Single Cycle Valve

2. Place the Bioruptor® on a bench



**Important Note:** Please make sure that the Bioruptor® Pico is always placed on a level surface.

3. Place the Water cooler below the Bioruptor®



**Location Requirements:** The Water cooler must be located below the Bioruptor® Pico (minimum elevation difference 400 mm or 15,74 inch).

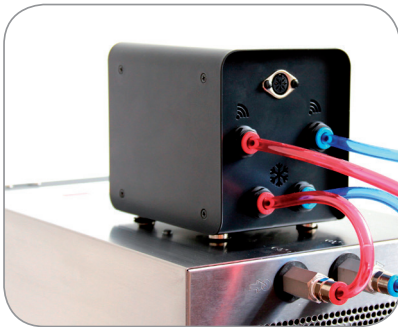
4. Place the Single Cycle Valve on top of the Water cooler as shown in the image.



5. Insert the short red and blue tubing into the outlets of the Water cooler and the lower red and blue nozzle connectors ❄️ of the single cycle valve box as shown in the image. Respect the red and blue color codes.



6. Connect the Bioruptor® Pico to the Water cooler with the long red and blue tubing by inserting them into the upper red and blue nozzle connectors 📶 of the single cycle valve box as shown in the image. Respect the red and blue color codes. [Optional: Cut the length you need for the output and input flow. Make sure there is enough slack.]



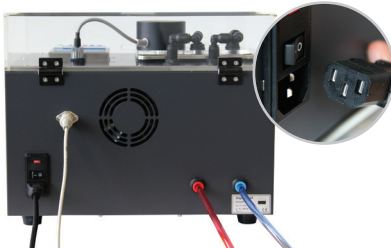
**Important Note:** If you need to cut a part of the tubing, always use the provided Cutting Device. Never use scissors because pieces of tubing with bad cuts generate leaks at junctions. Only properly cut tubes can be inserted in the connectors.

**[Note:** Red connector and red tubing will carry water from the sonication bath to the Water cooler. Blue connector and blue tubing will carry water from the Water cooler to the sonication bath].

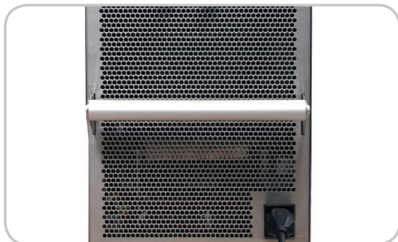
7. Plug the Single Cycle Valve cable into the outlet on the back side of the Single Cycle Valve Box and on the Bioruptor® Pico.



8. Plug the power cord into the outlet and switch on the power switch on the back side of the sonication unit.



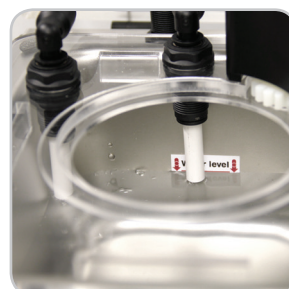
8. Plug the power cord into the outlet of the Water cooler.





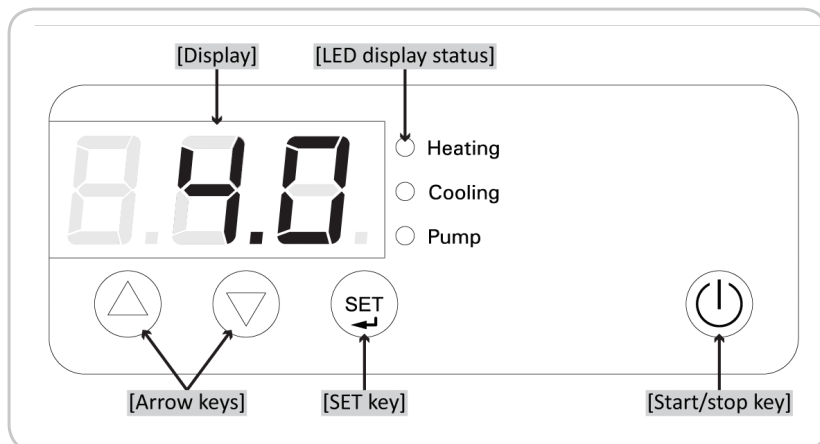
10. Press main switch on the front side of the Water cooler.



11. Fill the tank of the Water cooler with 3.5 liter and the sonication bath of the Bioruptor® up to the red line of the sticker (700 or 730 ml; depending on the model) with **distilled water only** (do not use deionized water!).



11. Temperature can be set to 4°C by pushing the SET key  and the arrow key  of the control panel at the same time..



12. Press Start/Stop key to control the temperature.

**Note:** See *Water cooler* manual for additional information

**Now you are ready to start !**

# Controlling the sonication



- ① **Digital Timer:**  
Allows the user to easily program the sonication of samples (ON/OFF pulse time & total time). See use of digital timer in next section below.
- ② **Start Button:**  
Begins sonication
- ③ **Stop Button:**  
Cancels sonication

Switch on power switch (back side of sonication unit)

## Digital timer

**CYCLE NUMBER**, **TIME ON** and **TIME OFF** are the parameters controlling sonication. For changing these parameters press the OK button. First the **TIME ON** screen appears with the flashing number. This parameter can be modified with the up (↑) and down button (↓). Please respect the range for each value. Press again the **OK** button to confirm the setting. To select **TIME OFF** and **Cycle Num** proceed the same way.

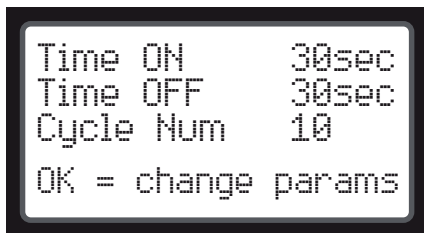
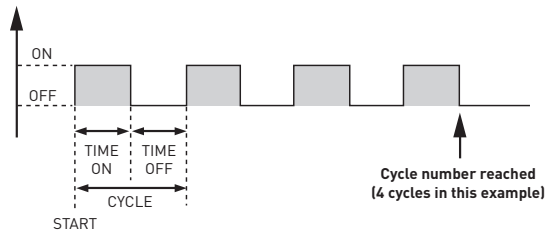


Figure 1. Main Screen



Bioruptor® Pico will sonicate as shown.

Once parameters are set press **START** (Figure 2).

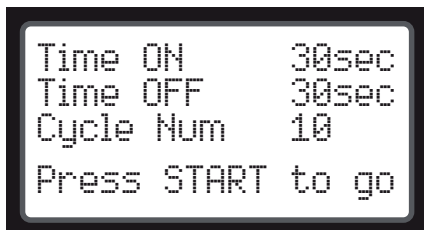


Figure 2. Main Screen

The information: **Close the lid to start the run** indicates that the sonication only starts when the acrylic glass cover is closed. The cover also prevents from any noise disturbance.



Figure 3. Close Lid Screen

Once the run started the **RUNNING** screen appears. As shown in Figure 4 the **RUNNING** screen indicates the elapsed time **ON**, time **OFF** and the **number of cycles**.



Figure 4. RUNNING Screen

If the acrylic glass cover will be opened during a run the sonication will automatically pause. Once the cover is again closed the machine continues with the sonication process. As shown in Figure 5, the **BREAK CYCLE** screen shows the information when the run stopped. In the example the machine stopped during the second sonication cycle, after 30 sec of **TIME ON** and 8 sec of **TIME OFF**.

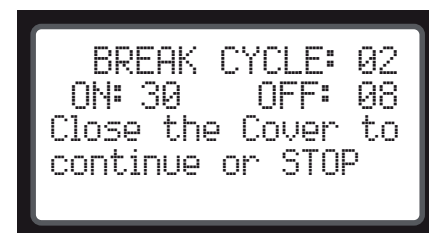


Figure 5. BREAK CYCLE Screen

If the sonication process worked properly (without any error messages) the **RUN OVER** screen appears (Figure 6). Press **ESC** to get back to the **Main screen** to start another sonication round.

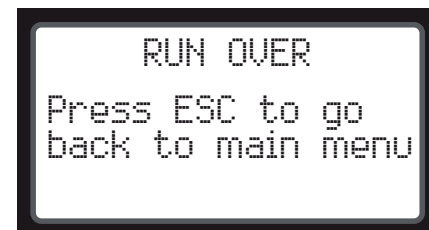


Figure 6. RUN OVER Screen

**IMPORTANT NOTE:** Machine has to rest for **20 minutes** before starting the next sonication run.



# Tube holders & tubes

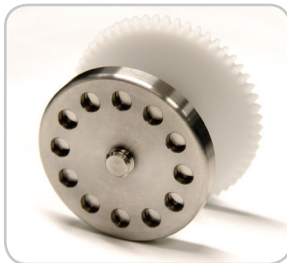


For chromatin and DNA shearing we highly recommend to use the below mentioned tube holders and the corresponding tubes.

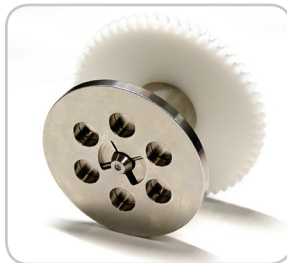
To guarantee homogeneity of chromatin or DNA shearing, the tube holders should always be completely filled with tubes. Never leave empty spaces in the tube holder. Fill the empty spaces with tubes containing the same volume of distilled water.



**0.1 ml tube holder & tube adaptor for Bioruptor® Pico**  
(Cat. No. B01200041)



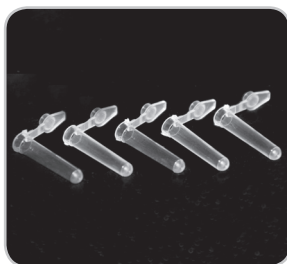
**0.65 ml tube holder for Bioruptor® Pico**  
(Cat. No. B01200043)



**1.5 ml tube holder for Bioruptor® Pico**  
(Cat. No. B01200040)



**15 ml sonication accessories for Bioruptor® Pico**  
(Cat. No. B01200016)



**0.1 ml Bioruptor® Microtubes (recommended for chromatin & DNA shearing)**  
(Cat. No. C30010015)



**0.65 ml Bioruptor® Microtubes (recommended for chromatin & DNA shearing)**  
(New Cat. No. C30010011;  
Old Cat. No. WA-005-0500)



**1.5 ml Bioruptor® Microtubes (recommended for chromatin, not recommended for DNA shearing)**  
(Cat. No. C30010016)



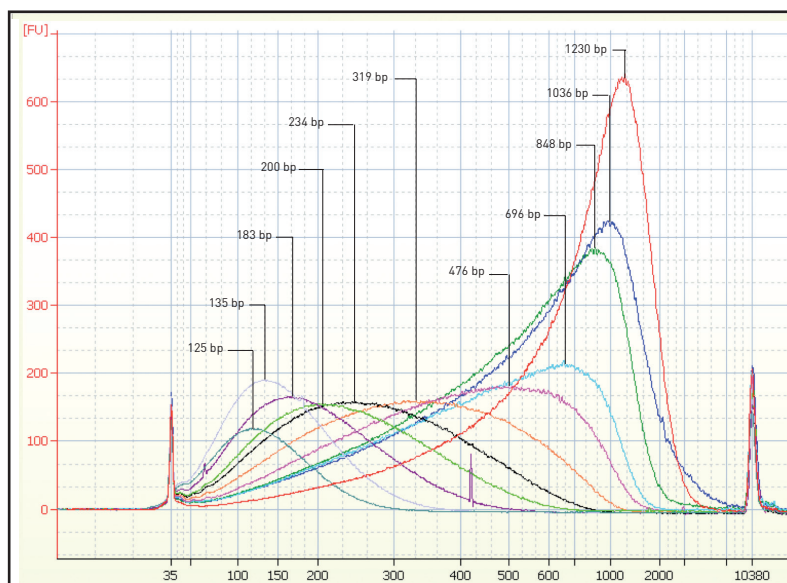
**15 ml Bioruptor® Tubes (recommended for Tissue disruption for protein extraction)**  
(Cat. No. C30010017)



**15 ml Bioruptor® Tubes & sonication beads (recommended for chromatin, not recommended for DNA shearing)**  
(Cat. No. C01020031)



# Standard protocols for DNA shearing



**Programmable DNA size distributions, excellent reproducibility, and high dsDNA yields with Bioruptor® Pico**

Figure shows different DNA size distributions of sheared genomic DNA produced by varying the duration of sonication. The different curves depict a specific Bioruptor® Pico Next-Generation run, optimized to produce specific mean sizes and size ranges for Next-Generation sequencing.

All samples were analyzed on Bioanalyzer 2100 using DNA High Sensitivity chip.

## Standard operating conditions

**Sample volume:** 100 µl

**Tubes:** 0.65 ml Bioruptor® Microtubes (New Cat. No. C30010011; Old Cat. No. WA-005-0500)

**Tube holder:** 0.65 ml tube holder for Bioruptor® Pico (Cat. No. B01200043) for 12 x 0.65 ml tubes

**Sonication buffer:** TE (10 mM Tris, 1mM EDTA, pH 7.5 - 8.0)

**DNA concentration:** 1-20 ng/µl (10 ng/µl recommended)

Samples are vortexed (5-10 sec) and centrifuged (10 sec) before shearing.

**For optimal results samples should be stored on ice during 5-10 minutes prior to sonication.**

**Temperature:** 4°C – Water Cooler

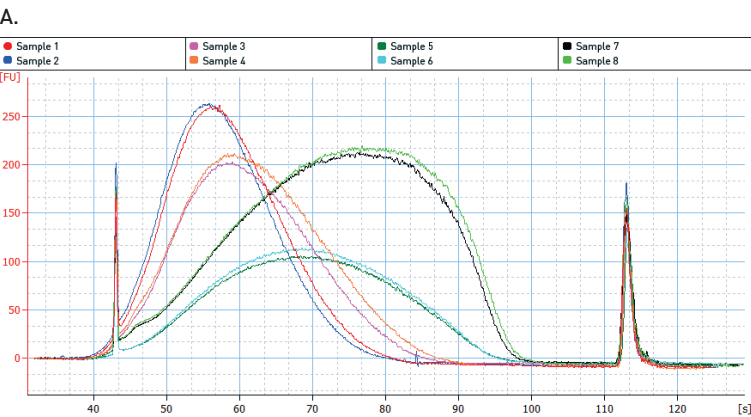
**Sonication cycle & total sonication time:** varies depending on desired DNA size (see table)

**Note:** Recommended protocols are subject to change without notice. Additional protocols are available on demand.

Target size	Cycle condition (On/Off cycle time)	Cycle number
150 bp	30"/30"	30
200 bp	30"/30"	13
300 bp*	30"/90"	6
400 bp*	15"/90"	7 - 8
1000 bp*	5"/90"	7 - 8

\* For longer fragments (300 up to 1000 bp), a short centrifugation step after half of the cycle numbers can significantly improve the results. Protocols for other size ranges (incl. longer fragments up to 1300 bp) are available on request.

The protocol settings listed above are recommended guidelines and actual results may vary depending on the type and amount of starting material, purity level, concentration and/or sample viscosity. It is highly recommended that a time course response experiment be carried out (e.g. varying the time of "on" and "off" durations as well as the number of cycles) to determine the appropriate treatment for your specific sample. Starting material with a smaller sample volume and a greater concentration than the recommended range may require a different time course to ensure homogenous shearing results.



**Broad DNA size distribution, excellent reproducibility, and high dsDNA yields with Bioruptor® Pico**

Figure A shows different DNA size distributions of sheared genomic DNA produced by varying the duration of sonication from 2 separate experiments (run-to-run variation). The different lanes depict 4 lanes from 2 different Bioruptor® Pico runs, optimized to produce specific mean sizes corresponding to 150, 200, 300 and 400 bp (based on the standard Ion Torrent standard sample preparation size requirements).

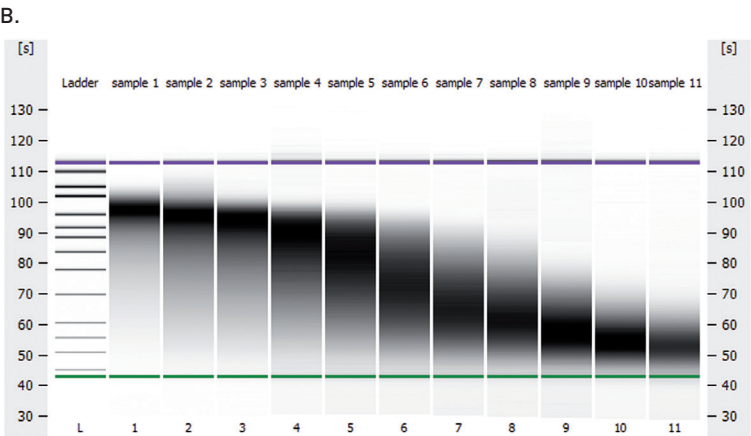


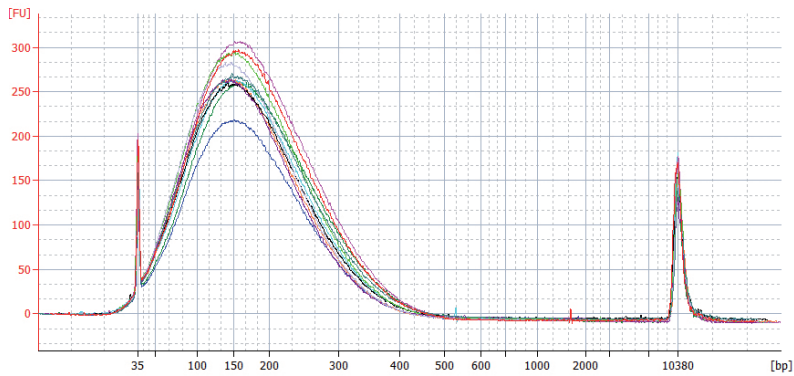
Figure B shows different DNA size distributions of sheared genomic DNA produced by varying the duration of sonication. The different lanes depict a specific Bioruptor® Pico run, optimized to produce specific mean sizes and size ranges for Next-Generation DNA sequencing.

Panel A: peak electropherogram view. Lanes 1,2: 150 bp; Lanes 3,4: 200 bp; Lanes 5,6: 300 bp; Lanes 7,8: 400 bp.

Panel B: gel virtual view

All samples were analyzed on Bioanalyzer 2100 using DNA High Sensitivity chip.

### A. Target Size: 150 bp

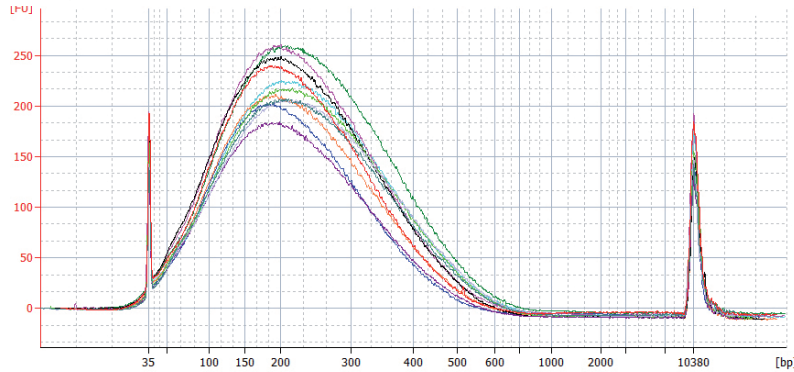


### Excellent reproducibility and programmable size distribution with Bioruptor® Pico

Panels A to D show size distributions of sheared genomic DNA from separate experiments aiming at producing high-quality DNA fragments compatible with Ion Torrent standard sample preparation protocols (150, 200, 300 and 400 bp).

Panel A: 30 cycles, 30 sec ON/30 sec OFF cycles. Expected fragment size: 150 bp, observed average fragment size is 150.6 bp (CV%: 2.07%).

### B. Target Size: 200 bp



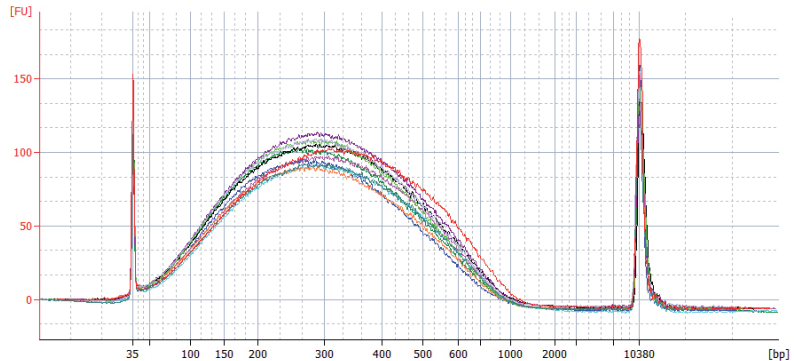
Panel B: 13 cycles, 30 sec ON/30 sec OFF cycles. Expected fragment size: 200 bp, observed average fragment size is 202.2 bp (CV%: 4.7%).

Panel C: 6 cycles, 15 sec ON/90 sec OFF cycles. Expected fragment size: 300 bp, observed average fragment size is 291.3 bp (CV%: 4.31%).

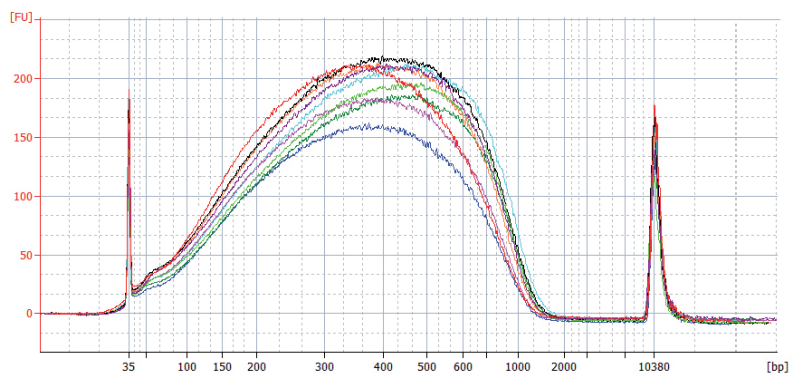
Panel D: 7 cycles, 15 sec ON/90 sec OFF cycles. Expected fragment size: 400 bp, observed average fragment size is 406.9 bp (CV%: 7.96%).

All samples were analyzed on Bioanalyzer 2100 DNA High Sensitivity chips.

### C. Target Size: 300 bp



### D. Target Size: 400 bp



## Important comments about DNA shearing

The Diagenode **ACT** (Adaptative Cavitation Transfer technology) process is highly reproducible. However, attention must be paid to the following treatment attributes to ensure best results:

- **Tubes:** At present, the recommended tube vessels are the 0.65 ml Bioruptor® Microtubes (New Cat. No. C30010011; Old Cat. No. WA-005-0500). Pay attention not to damage the cap when closing the tubes since this could alter sonication results.
- **Sample volume:** The recommended volume of the 0.65 ml Bioruptor® Microtubes (New Cat. No. C30010011; Old Cat. No. WA-005-0500) is 100 µl. When using lower volumes (e.g. ≤ 50 µl), less reproducible results may be observed due to an alteration of the ultrasonic waves distribution in the sample fluid; thus, reducing the efficiency of sonication which may result in broader size distribution or larger peaks.
- **Sample concentration:** Diagenode recommends using DNA concentration ranging between 1 and 20 ng/µl (10 ng/µl recommended). Using larger concentration (e.g. 50-100 ng/µl) may result in broader peaks or variable peak distribution.
- **Sample preparation:** Sample viscosity may have a major impact on sonication results. Careful resuspension of DNA sample is strongly recommended before sonication processing. Multiple pipetting and gentle vortexing followed by a short centrifugation to recover sample volume at the bottom of the tube is therefore strongly recommended. Storing DNA samples on ice during 5-10 minutes before sonication has also been shown to improve reproducibility.
- **DNA quality:** DNA quality and quantity must be considered carefully since bad quality and quantity DNA may have several impacts on sonication and Next-Gen sequencing downstream applications. First, DNA contamination (e.g. from superfluous nucleic acids such as RNA, small nucleic acid fragments, excess proteins, or other contaminating materials) may interfere with DNA measurement method leading to incorrect DNA quantitation thus. Also contaminating RNA in genomic DNA preparation might generate a biased fragment distribution profile on microfluidics-based platform (e.g. Agilent Bioanalyzer) or alter sonication efficiency.

Therefore it is highly recommended to use only high quality DNA when sonicating DNA for Next-Gen sequencing library preparation. The DNA sample to be processed should be highly pure, having an OD260/280 ratio of between 1.8 and 2.0, and should be as intact as possible. DNA extracted using standard techniques (e.g. Proteinase K digested, double phenol/chloroform extraction, ethanol precipitated, treatment with RNase-DNase free enzymatic digestion to remove contaminant RNA) or commercial spin-column based kits are recommended.

- **Water temperature:** Propagation of ultrasound in a liquid unavoidably produces heat that can ultimately alter DNA sample (e.g. by thermal denaturation). To ensure the best preservation of the sample, it is recommended to start the sonication process with cold water in the water bath. During sonication, especially when doing long sonication runs, the temperature must also be controlled. This is obtained by the automatic temperature control.
- **Automatic temperature control:** A recirculating *water cooler* is used to guarantee the automatic temperature control of the water bath during the whole sonication process. This *water cooler* (New Cat. No. B0201002, 230V; B02010003, 115V; B02010004, 100V; Old Cat. No. BioAcc-Cool) produces a regular water flow with a constant water level in the tank. An additional regulating valve (Single Cycle Valve, Cat. No. B02020004) ensures that water will only be replaced during the off cycle to avoid any interference between the water flow and the sonication process.
- **Sonication time:** Minor adjustments in cycle number may be made to optimize results for various sample types and concentrations. Cycle number listed above is a recommended guideline. Actual results may vary depending on the amount and type of starting material, concentration, viscosity and/or plastic tubes. Diagenode recommends setting up a time dose response experiment for determining appropriate cycle number. Larger length starting material (e.g. total genomic DNA) and higher concentration may require a longer dose to ensure a homogeneous shearing result.
- **Water bath:** The sonication water bath is a critical component of the Bioruptor® Pico sonication system.
  1. **Water purity:** Contaminants such as algae and particules may alter the ultrasonic waves propagation, resulting in broader size distribution or larger peaks. Bath water should be pure **distilled water**, at least once per month.

**2. Water bath maintenance:** The water bath metal surface is fragile and requires a careful maintenance. Use only soft sponge to remove traces. Never use scratch scrub sponge since this would alter the ultrasonic wave emitter surface.

**3. Water type: Distilled water**

#### **Supplementary Data:**

Please note that there are three main sources of variation in both peak base-pair size and distribution:

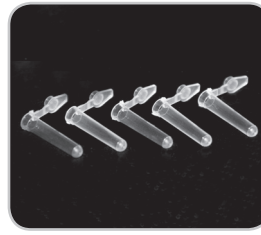
- 1) The physical process of DNA fragmentation might not be entirely random in AT- or GC- rich regions.
- 2) The analytical process to determine fragment size has inherent variances (for example, gel electrophoresis and microfluidics-based platform). Therefore, fragment distributions and peak values, even from technical replicates, may not appear identical. If the sheared DNA sample will be resin or column purified or concentrated prior to analysis, please remember to take out an aliquot for use as control prior to that step. Column purification and concentration of the sheared DNA will generate a biased fragment distribution profile due to the inherent greater loss of the smaller DNA fragments.
- 3) RNA contamination in genomic DNA preparation should be carefully removed using RNase-DNase free enzymatic digestion since they might generate a biased fragment distribution profile on microfluidics-based platform (e.g. Agilent Bioanalyzer) or alter sonication efficiency.

# Small volume DNA shearing for Bioruptor® Pico

**NOTICE:** For DNA shearing we highly recommend to use the 0.1 ml tube holder & tube adaptor (Cat. No. B01200041) and the corresponding 0.1 ml Bioruptor® Microtubes (Cat. No. C30010015).



**0.1 ml tube holder  
& tube adaptor for  
Bioruptor® Pico**  
(Cat. No. B01200041)



**0.1 ml Bioruptor® Microtubes**  
(Cat. No. C30010015)

To use the tube holder, remove the lower part by turning counterclockwise. Then place microtubes into the unit. Attach the lower part to the upper part of the adaptor. To guarantee homogeneity of DNA shearing, the tube holders should always be completely filled with tubes. Never leave empty spaces in the tube holder. Fill the empty spaces with tubes containing the same volume of distilled water.

## Standard operating conditions

- Sample volume:** 10 µl
- Tubes:** 0.1 ml Bioruptor® Microtubes (Cat. No. C30010015)
- Tube holder:** 0.1 ml tube holder & tube adaptor for Bioruptor® Pico (Cat. No. B01200041) for 12 x 0.1 ml tubes
- Sonication buffer:** TE (10 mM Tris, 1 mM EDTA), pH 7.5 - 8.0
- DNA concentration:** 10 ng/µl recommended.

Samples are vortexed (10-15 sec) and centrifuged (10 sec) before shearing.

**For optimal results samples should be stored on ice during 10-15 minutes prior to sonication.**

**Temperature:** 4°C - Water cooler (New Cat. No. B0201002, 230V; B02010003, 115V; B02010004, 100V; Old Cat. No. BioAcc-Cool) & Single Cycle Valve for Water cooler (Cat. No. B02020004)

**Sonication cycle and sonication time:** varies depending on desired DNA size (see table)

**Note:** Recommended protocols are subject to change without notice. Additional protocols are available on demand.



### Sonication table for small volume DNA Shearing

Target size	Cycle conditions (On/Off time)	Cycle number
200 bp	30"/30"	20 cycles
250 bp	30"/30"	15 cycles*
300 bp	30"/30"	13 cycles**
550 - 600 bp	15"/90"	7 cycles***
750 - 800 bp	15"/90"	6 cycles***

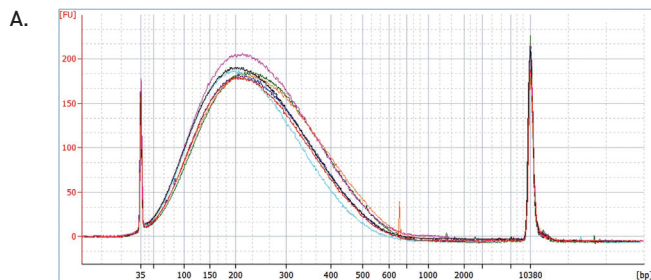
\* Short centrifugation after 5 and 10 cycles added.

\*\* Short centrifugation after 4 and 8 cycles added.

\*\*\* Short centrifugation after 3 cycles added.

- The protocol settings listed above are recommended guidelines and actual results may vary depending on the type and amount of starting material, purity level, concentration and/or sample viscosity. It is highly recommended that a time course response experiment be carried out (e.g. varying the time of "on" and "off" durations as well as the number of cycles) to determine the appropriate treatment for your specific sample. Starting material with a smaller sample volume and/or a greater concentration than the recommended range may require a different time course to ensure homogenous shearing results.
- Adding short centrifugation step(s) during the sonication round (e.g. after half of the cycle numbers) can significantly improve the results.
- Protocols for other size ranges are available on request.

### Small volume DNA shearing results



#### Programmable DNA size distribution and high reproducibility with Bioruptor® Pico using 0.1 ml Bioruptor® Microtubes

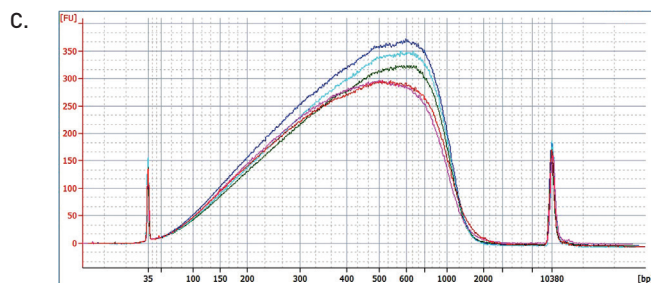
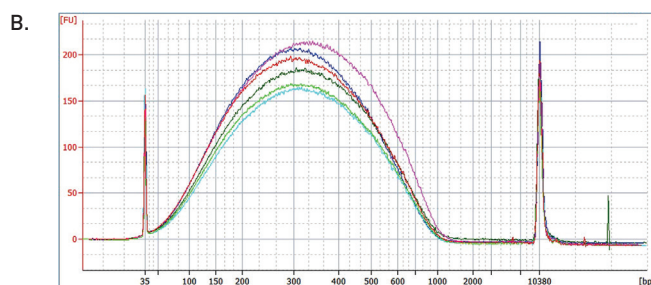
Panel A, B and C show DNA size distributions of sheared human genomic DNA using standard operating conditions.

Panel A: 200 bp after 20 cycles (30 sec ON/OFF). (Average size: 215 bp; CV%: 6.6%).

Panel B: 300 bp after 13 cycles (30 sec ON/OFF). Short centrifugation after 4 and 8 cycles added. (Average size: 316 bp; CV%: 4.5%).

Panel C: 550 – 600 bp after 7 cycles (15 sec ON/90 sec OFF). Short centrifugation after 3 cycles added. (Average size: 576 bp; CV%: 8.5%).

Panel A, B and C: peak electropherogram view.



## Important comments about DNA shearing

The Diagenode **ACT** (Adaptative Cavitation Transfer technology) process is highly reproducible. However, attention must be paid to the following treatment attributes to ensure best results:

- **Tubes:** At present, the recommended tube vessels are the 0.1 ml Bioruptor® Microtubes (Cat No. C30010015). Pay attention not to damage the cap when closing the tubes since this could alter sonication results.
- **Sample volume:** The recommended volume of the 0.1 ml Bioruptor® Microtubes (Cat. No. C30010015) is 10 µl. When using smaller volumes (e.g. < 10 µl; not smaller than 5 µl), less reproducible results may be observed due to an alteration of the ultrasonic waves distribution in the sample fluid; thus, reducing the efficiency of sonication which may result in broader size distribution or larger peaks.
- **Sample concentration:** Diagenode recommends using a DNA concentration of 10 ng/ µl. Using larger or smaller concentrations may result in variable peak distribution.
- **Sample preparation:** Sample viscosity may have a major impact on sonication results. Careful resuspension of DNA sample is strongly recommended before sonication processing. Multiple pipetting and gentle vortexing followed by a short centrifugation to recover sample volume at the bottom of the tube is therefore strongly recommended. Storing DNA samples on ice during 10-15 minutes before sonication has also been shown to improve reproducibility.
- **DNA Quality:** DNA quality and quantity must be considered carefully since bad quality and quantity DNA may have several impacts on sonication and next-gen sequencing downstream applications. First, DNA contamination (e.g. from superfluous nucleic acids such as RNA, small nucleic acid fragments, excess proteins, or other contaminating materials) may interfere with DNA measurement method leading to incorrect DNA quantitation thus. Also contaminating RNA in genomic DNA preparation might generate a biased fragment distribution profile on microfluidics-based platform (e.g. Agilent Bioanalyzer) or alter sonication efficiency.

Therefore it is highly recommended to use only high quality DNA when sonicating DNA for next-gen sequencing library preparation. The DNA sample to be processed should be highly pure, having an OD<sub>260</sub>/280 ratio of between 1.8 and 2.0, and should be as intact as possible. DNA extracted using standard techniques (e.g. Proteinase K digested, double phenol/chloform extraction, ethanol precipitated, treatment with RNase-DNase free enzymatic digestion to remove contaminant RNA) or commercial spin-column based kits are recommended.

- **Water temperature:** Propagation of ultrasound in a liquid unavoidably produces heat that can ultimately alter DNA sample (e.g. by thermal denaturation). To ensure the best preservation of the sample, it is recommended to start the sonication process with cold water in the water bath. During sonication, especially when doing long sonication runs, the temperature must also be controlled. This is obtained by the automatic temperature control.
- **Automatic temperature control:** A recirculating *water cooler* is used to guarantee the automatic temperature control of the water bath during the whole sonication process. This *water cooler* (New Cat. No. B0201002, 230V; B02010003, 115V; B02010004, 100V; Old Cat. No. BioAcc-Cool) produces a regular water flow with a constant water level in the tank. An additional regulating valve (Single Cycle Valve, Cat. No. B02020004) ensures that water will only be replaced during the off cycle to avoid any interference between the water flow and the sonication process.
- **Sonication time:** Minor adjustments in cycle number may be made to optimize results for various sample types and concentrations. Cycle number listed above is a recommended guideline. Actual results may vary depending on the amount and type of starting material, concentration, viscosity and/or plastic tubes. Diagenode recommends setting up a time dose response experiment for determining appropriate cycle number. Larger length starting material (e.g. total genomic DNA) and higher concentration may require a longer dose to ensure a homogeneous shearing result.
- **Water bath:** The sonication water bath is a critical component of the Bioruptor® Pico sonication system.
  1. **Water purity:** Contaminants such as algae and particules may alter the ultrasonic waves propagation, resulting in broader size distribution or larger peaks. Bath water should be pure **distilled water**, changed regularly (at least once per week).



**2. Water bath maintenance:** The water bath metal surface is fragile and requires a careful maintenance. Use only soft sponge to remove traces. Never use scratch scrub sponge since this would alter the ultrasonic wave emitter surface.

**3. Water type: Distilled water**

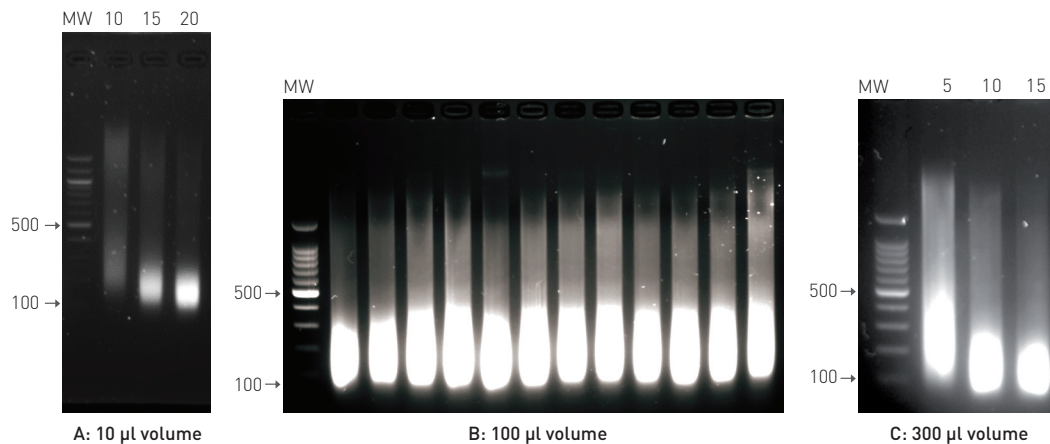
## Supplementary Data

Please note that there are three main sources of variation in both peak base-pair size and distribution:

- 1) The physical process of DNA fragmentation might not be entirely random in AT- or GC- rich regions.
- 2) The analytical process to determine fragment size has inherent variances (for example, gel electrophoresis and microfluidics-based platform). Therefore, fragment distributions and peak values, even from technical replicates, may not appear identical. If the sheared DNA sample will be resin or column purified or concentrated prior to analysis, please remember to take out an aliquot for use as control prior to that step. Column purification and concentration of the sheared DNA will generate a biased fragment distribution profile due to the inherent greater loss of the smaller DNA fragments.
- 3) RNA contamination in genomic DNA preparation should be carefully removed using RNase-DNase free enzymatic digestion since they might generate a biased fragment distribution profile on microfluidics-based platform (e.g. Agilent Bioanalyzer) or alter sonication efficiency.

## Consistent and highly reproducible chromatin shearing with the Bioruptor® Pico: 10 µl - 300 µl

HeLa cells are fixed with 1% molecular grade formaldehyde (for 8 min at room temperature). Nucleus isolation is performed using buffers and reagents of Diagenode's Chromatin Shearing Optimization kit - Low SDS (New Cat. No. C01020010; Old Cat. No. AA-001-0100) 1x10<sup>6</sup> cells are then resuspended in 100 µl Shearing Buffer prior to chromatin shearing.



**Panel A**, 10 µl volume: Chromatin samples are sheared for 10, 15 and 20 cycles of 30 sec ON/30 sec OFF with the Bioruptor® Pico using 0.1 ml Bioruptor® Microtubes (Cat. No. C30010015).

**Panel B**, 100 µl volume: Chromatin samples are sheared for 10 cycles of 30 sec ON/30 sec OFF with the Bioruptor® Pico using 0.65 ml Bioruptor® Microtubes (New Cat. No. C30010011; Old Cat. No. WA-005-0500).

**Panel C**, 300 µl volume: Chromatin samples are sheared for 5, 10 and 15 cycles of 30 sec ON/30 sec OFF with the Bioruptor® Pico using using 1.5 ml Bioruptor® Microtubes (Cat. No. C30010016).

Prior to de-crosslinking, samples are treated with RNase cocktail mixture at 37°C during 1 hour. The sheared chromatin is then de-crosslinked overnight and phenol/chloroform purified as described in the kit manual. 10 µl of DNA (equivalent of 500, 000 cells) are analyzed on a 2% agarose gel (MW corresponds to the 100 bp DNA molecular weight marker).

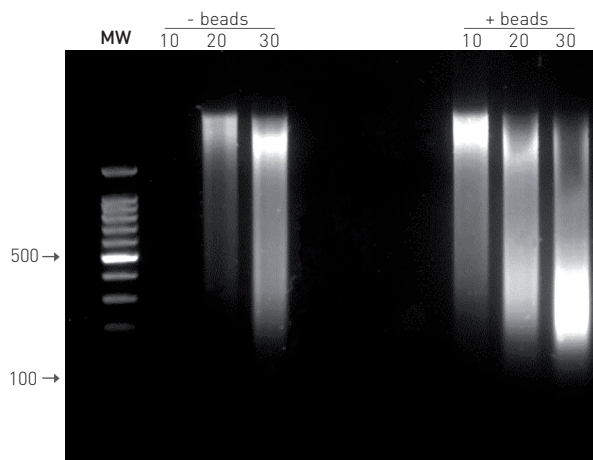
(MW corresponds to the 100 bp DNA molecular weight marker)

The protocol settings listed above are recommended guidelines and actual results may vary depending on the type and amount of starting material, purity level, concentration and/or sample viscosity. It is highly recommended that a time course response experiment be carried out (e.g. varying the time of "on" and "off" durations as well as the number of cycles) to determine the appropriate treatment for your specific sample. Starting material with a smaller sample volume and a greater concentration than the recommended range may require a different time course to ensure homogenous shearing results.

## Consistent and highly reproducible chromatin shearing with the Bioruptor® Pico: 500 µl - 2 ml

Chromatin shearing from HeLa cells is performed according to Diagenode's Chromatin Shearing Optimization kit – Low SDS protocol (Cat. No. AA-001-0100). Nuclei are resuspended in buffer iS1 at a final concentration of  $1 \times 10^6$  per 100 µl.

2 ml nuclei aliquots are sonicated with the Bioruptor® Pico in 15 ml Bioruptor® Tubes (Cat. No. C01020031) with or without sonication beads (sonication beads are part of Cat. No. C01020031) for 10, 20 or 30 cycles (30 sec ON/30 sec OFF). Samples are vortexed every 10-cycle round.



MW corresponds to the 100 bp DNA molecular weight marker

For shearing in a final volume of 2 ml, the 15 ml Bioruptor® Tubes are filled with sonication beads up to the third line of the graduation scale (0.3 ml), corresponding to around 800 mg of beads.

Prior to use, beads are washed by vortexing in 3 volumes of PBS. All buffer is removed before adding the samples.

Following shearing, samples are treated with RNase cocktail mixture at 37°C during 1 hour. The sheared chromatin is then de-crosslinked overnight and phenol/chloroform purified as described in the kit manual.

10 µl of DNA (equivalent of 500, 000 cells) are analyzed on a 2% agarose gel.

**Note:** For shearing in a final volume of 500 µl or 1 ml, the 15 ml Bioruptor® Tubes are filled with sonication beads up to the first or second line of the graduation scale (0.1 or 0.2 ml), corresponding to around 250 or 450 mg of beads.

The protocol settings listed above are recommended guidelines and actual results may vary depending on the type and amount of starting material, purity level, concentration and/or sample viscosity. It is highly recommended that a time course response experiment be carried out (e.g. varying the time of “on” and “off” durations as well as the number of cycles) to determine the appropriate treatment for your specific sample. Starting material with a smaller sample volume and a greater concentration than the recommended range may require a different time course to ensure homogenous shearing results.



Innovating Epigenetic Solutions

## Ordering information

Products	Cat. No.
<b>Bioruptor® Models</b>	
Bioruptor® Pico sonication device for 0.65 ml tube holder	B01060001
Bioruptor® Pico sonication device for 0.1 & 0.65 ml tube holder	B01060002
Bioruptor® Pico sonication device for 1.5 ml tube holder	B01060003
<b>Cooling System</b>	
Single Cycle Valve for Bioruptor® Pico	B02010002
Water Cooler	B02010002, 230 V - B02010003, 115 V - B02010004, 100 V
<b>Consumables</b>	
0.1 ml Bioruptor® Microtubes	C30010015
0.65 ml Bioruptor® Microtubes	C30010011
1.5 ml Bioruptor® Microtubes	C30010016
15 ml Bioruptor® Tubes	C30010017
15 ml Bioruptor® Tubes & sonication beads	C30010031
<b>Tube Holders</b>	
0.1 ml tube holder & tube adaptors for Bioruptor® Pico	B01200041
0.65 ml tube holder for Bioruptor® Pico	B01200043
1.5 ml tube holder for Bioruptor® Pico	B01200040
15 ml sonication accessories for Bioruptor® Pico	B01200016

Visit us at one of Diagenode's demo sites or discover our Automated Systems by performing some assays with the help of our R&D and Technical Department.  
[www.diagenode.com](http://www.diagenode.com)

### DIAGENODE HEADQUARTERS

DIAGENODE S.A.  
BELGIUM | EUROPE  
LIEGE SCIENCE PARK  
Rue Bois Saint-Jean, 3  
4102 Seraing - Belgium  
Tel: +32 4 364 20 50  
Fax: +32 4 364 20 51  
orders@diagenode.com  
info@diagenode.com

DIAGENODE INC.  
USA | NORTH AMERICA  
400 Morris Avenue, Suite #101  
Denville, NJ 07834  
Tel: +1 862 209-4680  
Fax: +1 862 209-4681  
orders.na@diagenode.com  
info.na@diagenode.com

FOR A COMPLETE LISTING OF  
DIAGENODE'S INTERNATIONAL  
DISTRIBUTORS VISIT:  
[http://www.diagenode.com/company/  
distributors.php](http://www.diagenode.com/company/distributors.php)  
For rest of the world, please contact  
Diagenode sa.  
[www.diagenode.com](http://www.diagenode.com)