

PRODUCT NAME	
Arabidopsis FLC-ATG Primer Pair	
Other names: AGAMOUS-LIKE 25, AT5G10140, AGL25, FLC, FLF, FLOWERING LOCUS C, FLOWERING LOCUS F, REDUCED STEM BRANCHING 6, RSB6	
Cat. No: <b>C17040002</b>	Format: 50 µl
	Format: 500 µl

**Description:** This primer pair specifically amplifies a genomic region the Arabidopsis FLC gene. These Primers are optimized for routine SYBR® Green Real-Time qPCR assay following ChIP.

**Amplicon length:** 99 base pairs

**Amplified region:** chr5: 3,179,116-3,179,214 (UCSC Jan 2004)

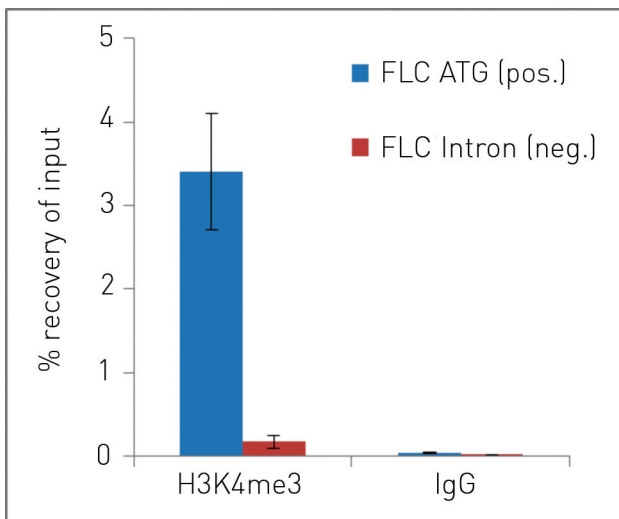
**Specificity:** *Arabidopsis thaliana*

**Format:** 10 µM solution in MilliQ water (5 µM of each primer)

**Storage:** For long storage, store at -20°C. Avoid multiple freeze-thaw cycles

**Precautions:** This product is for research use only. Not for use in diagnostic or therapeutic procedures

**Last data sheet update:** November 25, 2014



**Figure 1.** ChIP was performed on *Arabidopsis thaliana* (Col-0) seedlings 14 days after germination (dag) using our premium anti-H3K4me3 ChIP-seq grade antibody (#C15410003) and rabbit IgG (#C15410206). Data shown is derived from biological replicates. Sheared chromatin from 0.2 g (fw) of seedlings was used per IP. Quantitative PCR was performed with the control FLC-ATG and FLC-Intron1 primer sets from the kit. The recovery is expressed as % of input (the relative amount of immunoprecipitated DNA compared to input DNA after qPCR analysis).