

## Tomato leaves SlChr2-reg8 Primer pair

**Cat. No.** C17040006

**Lot #:** 001

**Size:** 50 µl/ 500 µl

**Concentration:** 10 µM

**Specificity:** Tomato

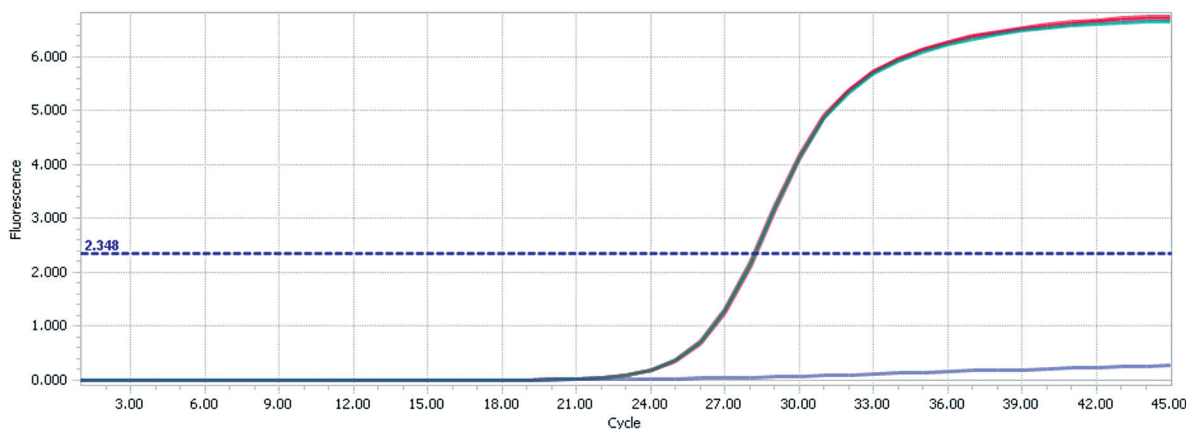
**Amplicon length:** 137 base pairs

**Format:** 10 µM solution in MiliQ water (5 µM of each primer)

**Storage:** For long storage, store at -20°C. Avoid multiple freeze-thaw cycles.

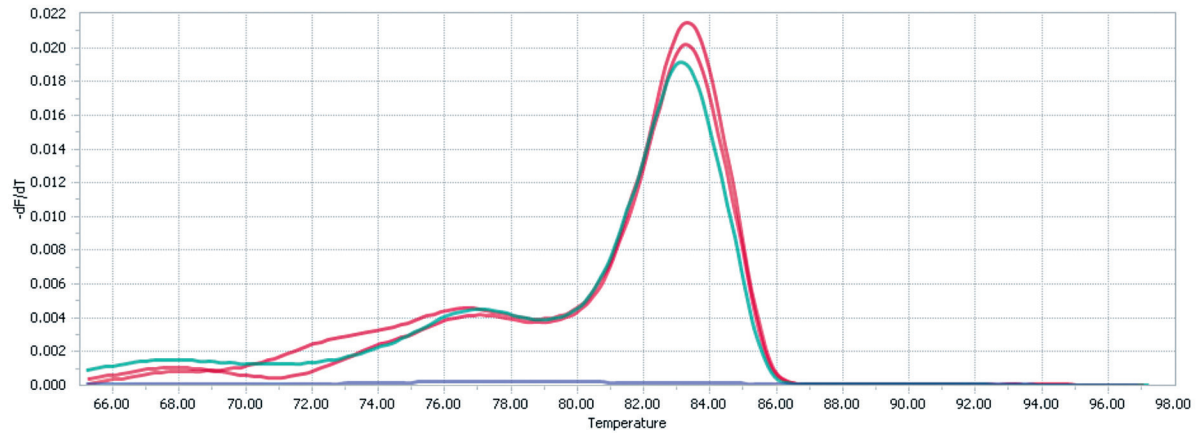
**Precautions:** This product is for research use only. Not for use in diagnostic or therapeutic procedures.

**Description:** This primer pair specifically amplifies a genomic region from chromosome 2 from tomato (*Solanum lycopersicum* cv MicroTom). The primers are thoroughly tested and optimized for routine SYBR® Green Real-Time qPCR assay following ChIP.



**Figure 1.**

Sheared DNA (0.5 ng) from tomato leaves (*Solanum lycopersicum* cv MicroTom) was analysed by real-time PCR using the Diagenode primers to amplify a genomic region from chromosome 2. 0.5 µl of provided primer pairs was used in a total volume of 10 µl. Real-time PCR was performed with the BioRad iCycler using SYBR Green. PCR conditions were as follows: an initial incubation at 95°C for 3 minutes, followed by 45 cycles of 30 seconds at 95°C, 30 seconds at 60°C and 30 seconds at 42°C. Triplicates are shown in red and green. The dotted line represents the threshold position. The no template control is shown in light blue and shows no amplification.



**Figure 2.**

Melting curve of PCR product amplified with the Tomato leaves SlChr2-reg8 Primer pair (Cat. No. C17040006). Real-time PCR was performed as described above. The melting curve analysis of the PCR product was performed by increasing the temperature from 55°C to 95°C in 0.5°C increments. No amplification was found in the negative control (light blue).

**Diagenode sa. BELGIUM | EUROPE**

LIEGE SCIENCE PARK  
 Rue Bois Saint-Jean, 3  
 4102 Seraing (Ougrée) - Belgium  
 Tel: +32 4 364 20 50  
 Fax: +32 4 364 20 51  
 orders@diagenode.com  
 info@diagenode.com

**Diagenode Inc. USA | NORTH AMERICA**

400 Morris Avenue, Suite 101  
 Denville, NJ 07834 - USA  
 Tel: +1 862 209-4680  
 Fax: +1 862 209-4681  
 orders.na@diagenode.com  
 info.na@diagenode.com

**Last update:** February 17, 2016