

## HP1 $\gamma$ recombinant protein

**Other names:** CBX3, HECH, HP1 gamma

**Cat. No.** C23010103

**Source:** E. coli

**Lot #:** 001

**Size:** 25  $\mu$ g/ 50  $\mu$ l

**Concentration:** 0.5  $\mu$ g/ $\mu$ l

**Specificity:** Human

**Purity:** Purified using FPLC, >98% purity as determined by SDS-PAGE.

**Storage buffer:** 20 mM Tris-Cl pH 7.6, 1 mM EDTA, 0.15 M NaCl, 10% glycerol, 0.5 mM PMSF and 1 mM DTT.

**Storage:** Store at -80°C; guaranteed stable for 2 years from date of receipt when stored properly.

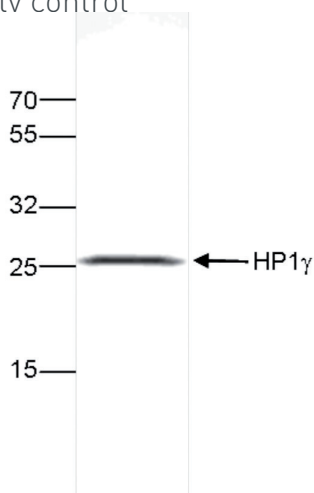
**Precautions:** This product is for research use only. Not for use in diagnostic or therapeutic procedures.

**Description:** Full length recombinant human N-terminal His tagged HP1 $\gamma$  (Heterochromatin Protein 1 Homolog Gamma) protein, produced in E. coli.

### Protein description

HP1 gamma (UniProt/Swiss-Prot entry Q13185) is a component of heterochromatin. It recognizes and binds to histone H3 tails methylated at 'Lys-9', leading to epigenetic repression of transcription. HP1 $\gamma$  may also interact with lamin B receptor (LBR), thereby contributing to the association of the heterochromatin with the inner nuclear membrane. HP1 $\gamma$  is recruited to sites of ultraviolet-induced DNA damage and double-strand breaks and may be associated with microtubules and mitotic poles during mitosis.

### Quality control



**Figure 1.**

SDS page of the HP1 $\gamma$  recombinant protein. The position of the protein of interest is indicated on the right; the marker (in kDa) is shown on the left.

#### Diagenode sa. BELGIUM | EUROPE

LIEGE SCIENCE PARK  
Rue Bois Saint-Jean, 3  
4102 Seraing (Ougrée) - Belgium  
Tel: +32 4 364 20 50  
Fax: +32 4 364 20 51  
orders@diagenode.com  
info@diagenode.com

#### Diagenode Inc. USA | NORTH AMERICA

400 Morris Avenue, Suite 101  
Denville, NJ 07834 - USA  
Tel: +1 862 209-4680  
Fax: +1 862 209-4681  
orders.na@diagenode.com  
info.na@diagenode.com

**Last update:** August 21, 2015