

PCBP1 polyclonal antibody

Cat. No. C15410359

Type: Polyclonal	Specificity: Human, mouse, rat: positive. Other species: not tested.
Size: 100 µg	Isotype: NA
Concentration: 1 µg/µl	Source: Rabbit
Lot No.: 001	Purity: Affinity purified polyclonal antibody.
Storage buffer: PBS containing 50% glycerol, does not contain a preservative.	Storage conditions: Store at -20°C.
Precautions: This product is for research use only. Not for use in diagnostic or therapeutic procedures.	

Last Data Sheet Update: May 23, 2018

Description

Other names: HEL-S-85, HNRPE1, HNRPX, HnRP-E1, HnRP-X

Polyclonal antibody raised in rabbit against human PCBP1 (Poly(RC) Binding Protein 1), using a KLH-conjugated synthetic peptide from the central region of the protein.

Applications

Applications	Suggested dilution	References
RIP	15 µg per 10 ⁷ cells	Fig 1
Western blotting	1:1,000	Fig 2
IP	5 µg per 5x10 ⁶ cells	Fig 3

Target Description

PCBP1 (UniProtKB/Swiss-Prot entry Q15365) is a single-stranded nucleic acid binding protein that binds preferentially to oligo dC. It is thought to play a role in formation of a sequence-specific alpha-globin mRNP complex which influences alpha-globin mRNA stability. PCBP1 also promotes poliovirus RNA replication and has been implicated in translational control of the human Papillomavirus type 16 L2 mRNA and hepatitis A virus RNA.

Validation data

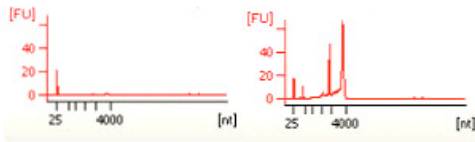


Figure 1. Immunoprecipitation using the Diagenode antibody directed against PCBP1

Immunoprecipitation was performed on total RNA isolated from 10 million K562 cells using 15 µg of the Diagenode antibody against PCBP1 (Cat. No. C15410359) or with an equal amount of rabbit IgG, used as a negative control. The immunoprecipitated RNA was subsequently analysed on a Bioanalyzer. Figure 1 shows the Bioanalyzer profile obtained with the negative control (upper left) and the PCBP1 antibody (upper right). The lower figure shows the gel image for the negative IgG control, the PCBP1 antibody and the input (lane 1, 2 and 3 respectively). The marker (in bp) is shown on the left, the position of the 28s and 18s ribosomal RNA is indicated on the right.

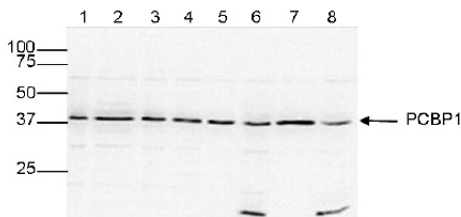


Figure 2. Western blot analysis using the Diagenode antibody directed against PCBP1

Whole cell extracts from 293T, K562, HeLa, Jurkat, MCF7, NIH3T3, WR19L and Rat1 cells (lanes 1 to 8, respectively) were analysed by Western blot using the Diagenode antibody against PCBP1 (Cat. No. C15410359) diluted 1:1,000 in PBS containing 1% skimmed milk. The position of the protein of interest is indicated on the right; the marker (in kDa) is shown on the left.

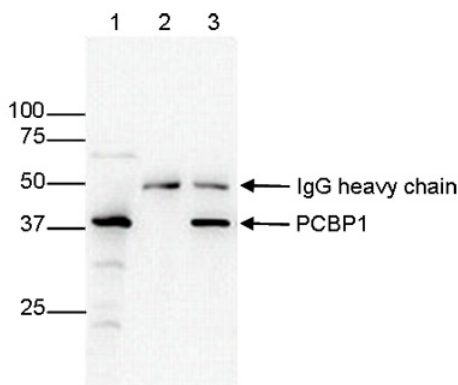


Figure 3. Immunoprecipitation using the Diagenode antibody directed against PCBP1

Immunoprecipitation was performed on whole cell extracts from K562 cells using 5 µg of the Diagenode antibody against PCBP1 (Cat. No. C15410359, lane 3). An equal amount of rabbit IgG was used as a negative control (lane 2). The immunoprecipitated PCBP1 protein was subsequently detected by western blot with the PCBP1 antibody as described above. The input is shown in lane 1.