

ELAVL2 polyclonal antibody

Cat. No. C15410347

Type: Polyclonal	Specificity: Human: positive. Other species: not tested.
Size: 100 µg	Isotype: NA
Concentration: 1 µg/µl	Source: Rabbit
Lot No.: 001	Purity: Affinity purified polyclonal antibody.
Storage buffer: PBS containing 50% glycerol, does not contain a preservative.	Storage conditions: Store at -20°C.
Precautions: This product is for research use only. Not for use in diagnostic or therapeutic procedures.	

Last Data Sheet Update: March 30, 2018

Description

Other names: HUB, HELN1, HEL-N1

Polyclonal antibody raised in rabbit against human ELAVL2 (ELAV Like RNA Binding Protein 2), using a KLH-conjugated synthetic peptide from the N-terminal part of the protein.

Applications

Applications	Suggested dilution	References
RIP	15 µg per 10 ⁷ cells	Fig 1
Western blotting	1:1,000	Fig 2
IP	5 µg per 2.5x10 ⁵ cells	Fig 3

Target Description

ELAVL2 (UniProtKB/Swiss-Prot entry Q12926) is a neural- specific member of the ELAVL RNA-binding protein family. It selectively binds to the 3' UTR region of several mRNA's including its own and the FOS and ID mRNA's.

Validation data

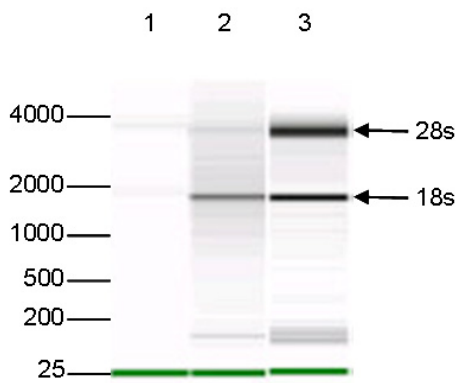
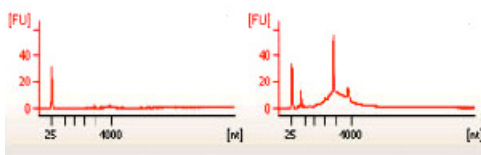


Figure 1. Immunoprecipitation using the Diagenode antibody directed against ELAVL2

Immunoprecipitation was performed on total RNA isolated from 10 million 293T cells transfected with an ELAVL2 expression vector using 15 µg of the Diagenode antibody against ELAVL2 (Cat. No. C15410347) or with an equal amount of rabbit IgG, used as a negative control. The immunoprecipitated RNA was subsequently analysed on a Bioanalyzer. Figure 1 shows the Bioanalyzer profile obtained with the negative control (upper left) and the ELAVL2 antibody (upper right). The lower figure shows the gel image for the negative IgG control, the ELAVL2 antibody, and the input (lane 1, 2 and 3 respectively). The marker (in bp) is shown on the left, the position of the 28s and 18s ribosomal RNA is indicated on the right.

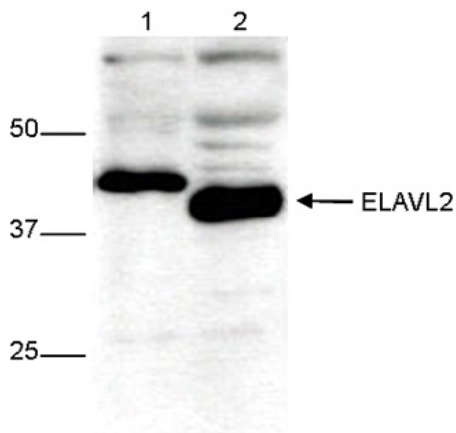


Figure 2. Western blot analysis using the Diagenode antibody directed against ELAVL2

Whole cell extracts from 293T cells transfected with an ELAVL2 expression vector (lane 1) and from human brain tissue (lane 2) were analysed by Western blot using the Diagenode antibody against ELAVL2 (Cat. No. C15410347) diluted 1:1,000 in PBS containing 1% skimmed milk. The position of the protein of interest is indicated on the right; the marker (in kDa) is shown on the left.

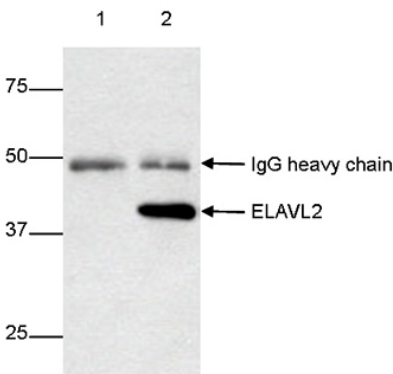


Figure 3. Immunoprecipitation using the Diagenode antibody directed against ELAVL2

Immunoprecipitation was performed on whole cell extracts from 293T cells transfected with an ELAVL2 expression vector using 5 µg of the Diagenode antibody against ELAVL2 (Cat. No. C15410347, lane 2). An equal amount of rabbit IgG was used as a negative control (lane 1). The immunoprecipitated ELAVL2 protein was subsequently detected by western blot with the ELAVL2 antibody as described above.