

CRBN monoclonal antibody

Cat. No. C15200245

Type: Monoclonal	Specificity: Human: positive. Other species: not tested.
Size: 50 µg	Isotype: IgG1
Concentration: 1 µg/µl	Source: Mouse
Lot No.: 001	Purity: Protein G purified monoclonal antibody.
Storage buffer: TBS containing 0.02 % Na-azide.	Storage conditions: Store at -20°C; for long storage, store at -80°C. Avoid multiple freeze-thaw cycles.
Precautions: This product is for research use only. Not for use in diagnostic or therapeutic procedures.	

Last Data Sheet Update: February1, 2019

Description

Monoclonal antibody raised in mouse against the N-terminus of the CRBN (Cereblon).

Applications

Applications	Suggested dilution	References
Western blotting	1:1,000	Fig 1
IP	1:200	Fig 2

Target Description

CRBN (UniProt/Swiss-Prot entry Q96SW2) is a cytoplasmic protease that is related to the Lon protease protein family. It mediates the ubiquitination and subsequent proteasomal degradation of target proteins, such as MEIS2. CRBN is associated with a calcium channel membrane protein and is thought to play a role in brain development and in memory and learning by regulating the assembly and neuronal surface expression of large-conductance calcium-activated potassium channels brain through its interaction with KCNT1. Mutations in the CRBN gene are associated with autosomal recessive nonsyndromic cognitive disability.

Validation data

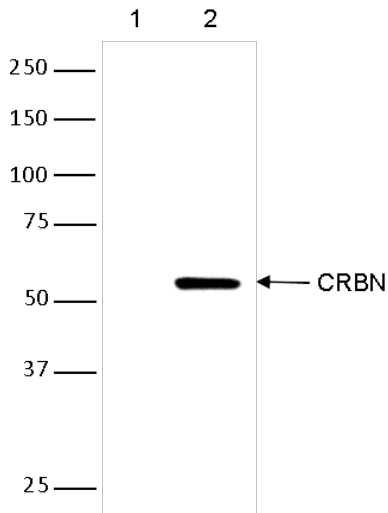


Figure 1. Western blot analysis using the Diagenode monoclonal antibody directed against CRBN

Western blot was performed on protein extracts from wild type MOLT4 cells (lane 2) or MOLT4-CRBN^{-/-} cells (lane 1) using the Diagenode antibody against CRBN (cat. No. C15200245) diluted 1:300 in PBS-Tween containing 0.5% NFDM. The marker is shown on the left, position of the CRBN protein is indicated on the right.

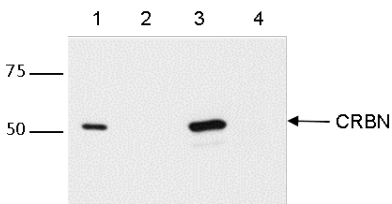


Figure 2. IP using the Diagenode monoclonal antibody directed against CRBN

IP was performed on whole cell extracts (400 µg) from either MOLT4 wildtype (lane 1, 3) or MOLT4 CRBN^{-/-} cells (lane 2, 4) using the Diagenode antibody against CRBN (cat. No. C15200245). The immunoprecipitated proteins were subsequently analysed by Western blot with the antibody as described above. Lane 3 and 4 show the result of the IP, the input (20 µg) is shown lane 1 and 2.