

## mTOR polyclonal antibody - Classic

**Cat. No.** C15410262

**Type:** Polyclonal

**Source:** Rabbit

**Lot #:** 41059

**Size:** 25 µg/100 µg

**Concentration:** 1 µg/µl

**Specificity:** Human, mouse, rat

**Purity:** Purified by Protein A and peptide affinity chromatography.

**Storage:** Store at -20°C; for long storage, store at -80°C. Avoid multiple freeze-thaw cycles.

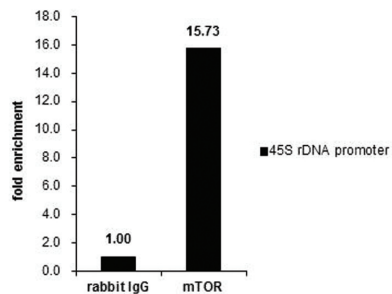
**Precautions:** This product is for research use only. Not for use in diagnostic or therapeutic procedures.

### Applications

	Suggested dilution*	Results
ChIP assay	5 µg/ChIP	Figure 1
ICC/IF	1:100-1:1,000	Figure 3
IHC	1:100-1:1,000	Figure 5, 6
Immunoprecipitation	1:100-1:500	Figure 2
Western blot	1:500-1:3,000	Figure 4, 7, 8

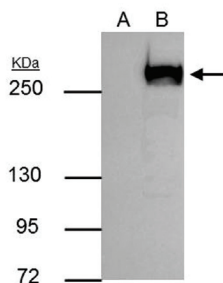
\*Optimal dilutions/concentrations should be determined by the researcher.

### Results



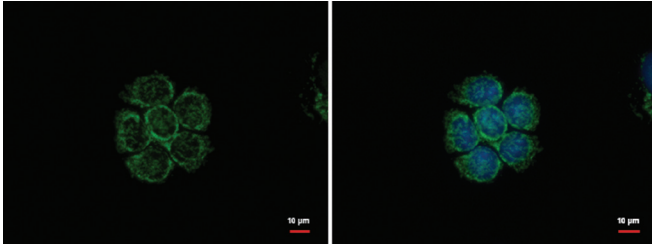
**Figure 1. mTOR ChIP results**

ChIP was performed with 293T chromatin extract and 5 µg of either control rabbit IgG or mTOR antibody. The precipitated DNA was detected by PCR with primer set targeting to 45S rDNA promoter.



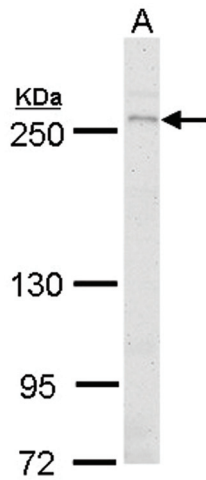
**Figure 2. mTOR IP results**

mTOR antibody immunoprecipitates mTOR protein in IP experiments. IP Sample: 293T whole cell extract. A : Control with 3 µg of pre-immune rabbit IgG. B : Immunoprecipitation of mTOR by 3 µg of mTOR antibody (C15410262). The immunoprecipitated mTOR protein was detected by SDS-PAGE with the mTOR antibody (Cat. No. C15410262) diluted 1:1000.



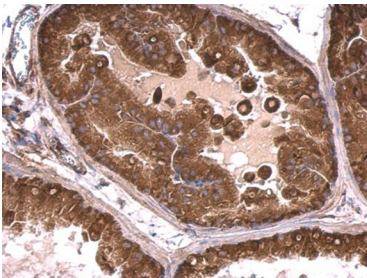
**Figure 3. mTOR IF results**

mTOR antibody detects mTOR protein in the cytoplasm and nucleus by immunofluorescent analysis.  
Sample: MCF-7 cells were fixed in 100% MeOH for 5 min.  
Green: mTOR protein stained by mTOR antibody (C15410262) diluted 1:500.  
Blue: Hoechst 33342 staining.



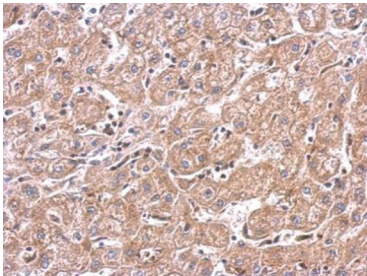
**Figure 4. mTOR WB results**

mTOR antibody detects mTOR protein by western blot analysis.  
50 µg mouse brain extract  
5 % SDS-PAGE  
mTOR antibody (C15410262) dilution: 1:500



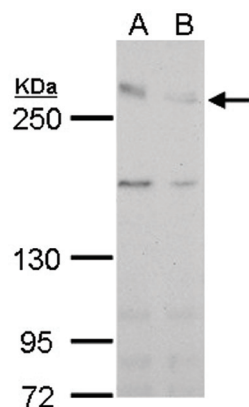
**Figure 5. mTOR IHC results**

mTOR antibody detects mTOR protein in the cytosol on mouse prostate by immunohistochemical analysis.  
Sample: Paraffin-embedded mouse prostate.  
mTOR antibody (C15410262) dilution: 1:500.



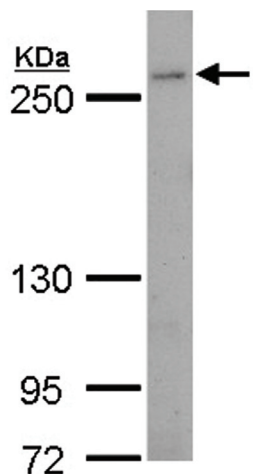
**Figure 6. IHC results**

mTOR antibody detects mTOR protein in the cytosol on hepatoma by immunohistochemical analysis.  
Sample: Paraffin-embedded hepatoma.  
mTOR antibody (C15410262) dilution: 1:500.



**Figure 7. mTOR WB results**

mTOR antibody detects mTOR protein by western blot analysis.  
A. 30  $\mu$ g HeLa whole cell extract (untreated)  
B. 30  $\mu$ g HeLa whole cell extract (500  $\mu$ M CoCl<sub>2</sub> treatment for 24 hr)  
5 % SDS-PAGE  
mTOR antibody (C15410262) dilution: 1:1,000



**Figure 8. mTOR WB results**

mTOR antibody detects mTOR protein by western blot analysis.  
30  $\mu$ g Raji whole cell extract  
5 % SDS-PAGE  
mTOR antibody (C15410262) dilution: 1:1,000