

Ash2 polyclonal antibody

Other names: SMARCA5, ISWI, WCRF135)

Cat. No. C15100040 (AC-040-100)

Type: Monoclonal **Isotype:** IgG2b

Source: Mouse

Lot #: 001

Size: 100 µl

Concentration: not determined

Specificity: Human: positive - Other species: not tested.

Purity: Ascites fluid from mouse containing 0.05% azide.

Storage: Store at -20°C; for long storage, store at -80°C. Avoid multiple freeze-thaw cycles.

Precautions: This product is for research use only. Not for use in diagnostic or therapeutic procedures.

Description: Monoclonal antibody raised in mouse against human SNF2H (SWI/SNF-related, matrix-associated, actin-dependent) using a recombinant protein.

Applications

| | Suggested dilution | References |
|---------------------|--------------------|------------|
| Western blotting | 1:1,000 | Fig 1 |
| Immunofluorescence | 1:100 - 1:500 | Ref 1 |
| Immunoprecipitation | 1 µg/IP | Ref 1 |

This antibody has been described in:

1) Loyola A, Huang JY, LeRoy G, Hu S, Wang YH, Donnelly RJ, Lane WS, Lee SC and Reinberg D (2003), **Functional analysis of the subunits of the chromatin assembly factor RSF**. *Mol Cell Biol* 23: 6759-6768.

Target description

Complexes containing Snf2h (SMARCA5) (UniProtKB/Swiss-Prot entry O60264) are capable of forming ordered nucleosome arrays on chromatin in vitro (may require intact histone H4 tails). SNF2h is also required for replication of pericentric heterochromatin in S-phase, specifically in conjunction with BAZ1A. Snf2h probably also plays a role in repression of poll dependent transcription of the rDNA locus, through the recruitment of the SIN3/HDAC1 corepressor complex to the rDNA promoter. Snf2h is a catalytic subunit of the four known chromatin-remodeling complexes: CHRAC, RSF, ACF/WCRF, and WICH. Each complex contains subunits which may regulate the specificity or catalytic activity of SMARCA5. Snf2h possesses intrinsic ATP-dependent nucleosome remodelling activity.

Results

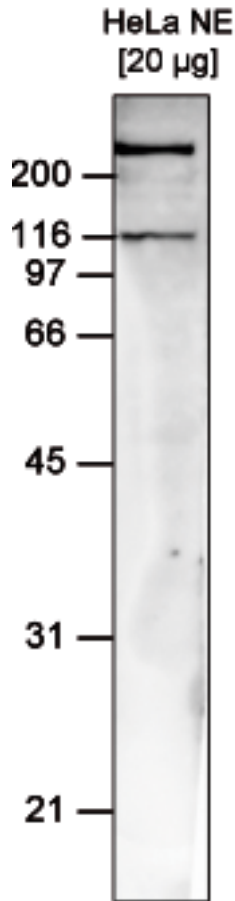


Figure 1. Western blot analysis using the Diagenode monoclonal antibody directed against hSNF2H

Western blot was performed on nuclear extracts from HeLa cells (HeLa NE, 20 µg) using the Diagenode monoclonal antibody against hSNF2H (Cat. No. C15100040), diluted 1:1,000 in TBS-Tween containing 5% skimmed milk. The molecular weight marker (in kDa) is shown on the left), the position of the protein of interest is shown on the right.

Diagenode sa. BELGIUM | EUROPE

LIEGE SCIENCE PARK
Rue Bois Saint-Jean, 3
4102 Seraing (Ougrée) - Belgium
Tel: +32 4 364 20 50
Fax: +32 4 364 20 51
orders@diagenode.com
info@diagenode.com

Diagenode Inc. USA | NORTH AMERICA

400 Morris Avenue, Suite 101
Denville, NJ 07834 - USA
Tel: +1 862 209-4680
Fax: +1 862 209-4681
orders.na@diagenode.com
info.na@diagenode.com

Last update: March 2, 2010