

PRODUCT NAME		
dRtf1 polyclonal antibody		
Other names: CDG1N, GTL7		
<b>Cat. No.</b> C15310018 (CS-018-100)	<b>Type:</b> Polyclonal	<b>Size:</b> 100 µl
<b>Lot #:</b> 001	<b>Source:</b> Rabbit	<b>Concentration:</b> not determined

**Description:** Polyclonal antibody raised in rabbit against drosophila Rtf1 (Rtf1, Paf1/RNA polymerase II complex component, homolog), using the full length recombinant protein.

**Specificity:** Drosophila and human: positive  
Other species: not tested

Applications	Suggested dilution	References
Western blotting	1:1,000	Fig 1; Ref 1
Immunofluorescence	1:50	Ref 1
Immunoprecipitation	12 µg per IP	Ref 1
ChIP	1 - 5 µg per ChIP	Ref 1

**Purity:** Whole antiserum from rabbit containing 0.05% azide.

**Storage:** Store at -20°C; for long storage, store at -80°C. Avoid multiple freeze-thaw cycles.

**Precautions:** This product is for research use only. Not for use in diagnostic or therapeutic procedures.

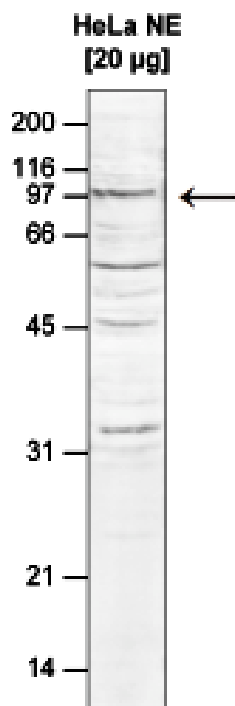
**This antibody has been described in:**

(1) Adelman K, Wei W, Ardehali MB, Werner J, Zhu B, Reinberg D and Lis JT (2006) Drosophila Paf1 modulates chromatin structure at actively transcribed genes. Mol Cell Biol 26:250-260.

**Last data sheet update:** April 9, 2010

**Target description**

PAF is a five-subunit protein complex composed of Paf1, Cdc73, Leo1, Rtf1 and Ctr9, which was first purified from yeast. The yeast PAF (yPAF) complex interacts with RNA polymerase II and coordinates the setting of histone marks associated with active transcription. The human PAF (hPAF) complex shares four subunits with yPAF (hCtr9, hPaf1, hLeo1 and Cdc73), but contains an additional higher eukaryotic-specific subunit, hSki8. In addition to coordinating events during transcription (initiation, promoter clearance and elongation); PAF also coordinates events in RNA quality control.



**Figure 1**

**Western blot analysis using the Diagenode antibody directed against dRtf1**

Western blot was performed on nuclear extracts from HeLa cells (HeLa NE, 20 µg) with the Diagenode antibody against dRtf1 (cat# CS-018-100) diluted 1:1,000 in TBS-Tween containing 5% skimmed milk. The molecular weight marker (in kDa) is shown on the left; the location of the protein of interest is indicated on the right.