

PRODUCT NAME		
ctr9/PAF1 polyclonal antibody		
Other names: SH2BP1, TSBP, p150, p150TSP		
Cat. No. C15310112 (CS-112-100)	Type: Polyclonal	Size: 100 µl
Lot #: A365-004	Source: Rabbit	Concentration: not determined

Description: Polyclonal antibody raised in rabbit against mouse ctr9/PAF1 (ctr9, Paf1/RNA polymerase II complex component), using a KLH-conjugated synthetic peptide containing an amino acid sequence from the N-terminal part of the protein [1].

Specificity: Mouse: positive
Other species: not tested

Applications	Suggested dilution	References
ELISA	1:100 – 1:500	Fig 1
Western blotting	1:500	Fig 2 [1]

Purity: Whole antiserum from rabbit containing 0.05% azide.

Storage: Store at -20°C/ -80°C. Avoid multiple freeze-thaw cycles.

Precautions: This product is for research use only. Not for use in diagnostic or therapeutic procedures.

References:

[1] Peptide design by Andrea Kranz, Western blot analysis by Heike Petzold and Andrea Kranz, BIOTEC, Dept. of Genomics, Prof. A. F. Stewart, TU Dresden, Tatzberg 47/49, 01307 Dresden, Germany

Last data sheet update: April 6, 2010

Target description

Ctr9/PAF1 (UniProt/Swiss-Prot entry Q6PD62) is part of the PAF protein complex, which associates with the RNA polymerase II subunit POLR2A. Beside its involvement in transcriptional initiation and RNA processing, the PAF complex also plays a role in the modification of histone tails as it is required for the methylation of lysine 4 and 79 of histone H3 and in the mono-ubiquitination of histone H2B at lysine 123.

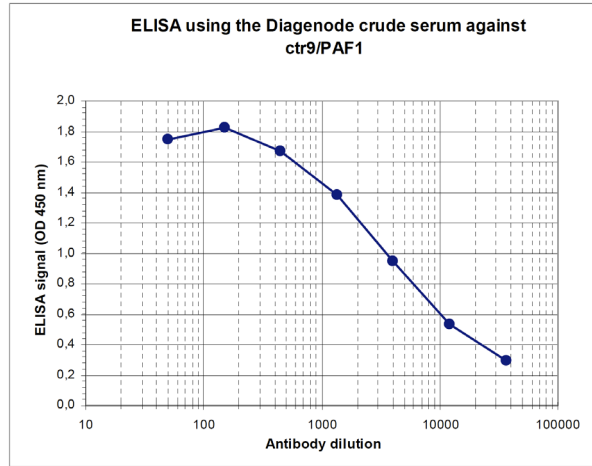


Figure 1
Determination of the titer

To determine the titer, an ELISA was performed using a serial dilution of the Diagenode antibody directed against mouse ctr9/PAF1 (Cat. No. CS-112-100). The plates were coated with the peptide used for immunization of the rabbit. By plotting the absorbance against the antibody dilution (Figure 1), the titer of the antibody was estimated to be 1:4,600.

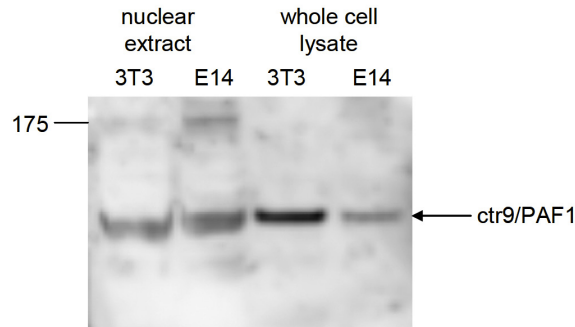


Figure 2
Western blot analysis using the Diagenode antibody directed against ctr9/PAF1 (1)

Western blot was performed on nuclear extracts and whole cell lysates from mouse fibroblasts (NIH3T3) and embryonic stem cells (E14Tg2a) with the Diagenode antibody against mouse ctr9/PAF1 (Cat. No. CS-112-100), diluted 1:500 in BSA/PBS-Tween. The molecular weight marker (in kDa) is shown on the left; the location of the protein of interest (expected size: 133 kDa) is indicated on the right.