

YY1 polyclonal antibody

Other names: INO80S, NF-E1, DELTA, UCRBP, YIN-YANG-1

Cat. No. C15310242 (CS-PA022-100)

Type: Polyclonal

Source: Rabbit

Lot #: A1157-004

Size: 100 µl

Concentration: not determined

Specificity: Human, mouse: positive / Other species: not tested

Purity: Whole antiserum from rabbit containing 0.05% azide.

Storage: Store at -20°C; for long storage, store at -80°C. Avoid multiple freeze-thaw cycles.

Precautions: This product is for research use only. Not for use in diagnostic or therapeutic procedures.

Description: Polyclonal antibody raised in rabbit against human YY1 (YY1 transcription factor) using two KLH-conjugated synthetic peptides containing a sequence from the central region of the protein.

Applications

	Suggested dilution	Results
ELISA	1:100 - 1:500	Fig 1

*The optimal dilution for other applications should be determined by the end user. For WB we suggest starting with a 1:500 dilution

Target description

YY1 (UniProtKB/Swiss-Prot entry P25490) is a multifunctional transcription factor that exhibits positive and negative control on a large number of cellular and viral genes by binding to sites overlapping the transcription start site. The consensus sequence is 5'-CCGGCATNTT-3', although some genes have been shown to contain a longer binding motif allowing enhanced binding. The initial CG dinucleotide can be methylated greatly reducing the binding affinity. The effect on transcription regulation is depending upon the context in which YY1 binds and diverse mechanisms of action include direct activation or repression, indirect activation or repression via cofactor recruitment, or activation or repression by disruption of binding sites or conformational DNA changes. Its activity is regulated by transcription factors and cytoplasmic proteins that have been shown to abrogate or completely inhibit YY1-mediated activation or repression. YY1 may play an important role in development and differentiation.

Results

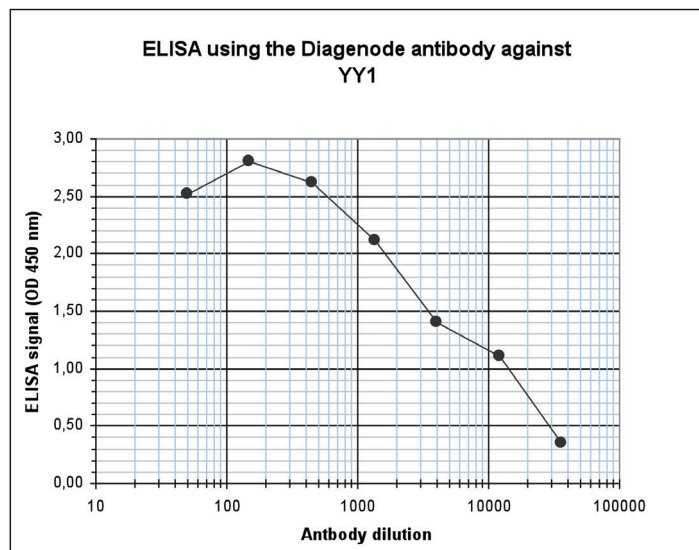


Figure 1. Determination of the antibody titer

To determine the titer of the antibody, an ELISA was performed using a serial dilution of the Diagenode antibody directed against YY1 (cat. No. CS-PA022-100). The plates were coated with the peptides used for immunization of the rabbit. By plotting the absorbance against the antibody dilution (Figure 1), the titer of the antibody was estimated to be 1:4,800.

Diagenode sa. BELGIUM | EUROPE

Avenue de l'hôpital,1
Tour GIGA, 3rd Floor
4000 Liège - Belgium
Tel: +32 4 364 20 50
Fax: +32 4 364 20 51
orders@diagenode.com
info@diagenode.com

Diagenode Inc. USA | NORTH AMERICA

400 Morris Avenue, Suite 101
Denville, NJ 07834 - USA
Tel: +1 862 209-4680
Fax: +1 862 209-4681
orders.na@diagenode.com
info.na@diagenode.com

Last update: September 5, 2012