

## YY1 polyclonal antibody

**Other names:** INO80S, NF-E1, YY-1, Yin-Yang-1, UCRBP

**Cat. No.** C15410345

**Type:** Polyclonal **ChIP grade/ChIP-seq grade**

**Source:** Rabbit

**Lot #:** A2649-0040

**Size:** 50 µg/22 µl

**Concentration:** 2.3 µg/µl

**Specificity:** Human: positive

Other species: not tested

**Purity:** Affinity purified polyclonal antibody in PBS containing 0.05% azide.

**Storage:** Store at -20°C; for long storage, store at -80°C. Avoid multiple freeze-thaw cycles.

**Precautions:** This product is for research use only. Not for use in diagnostic or therapeutic procedures.

**Description:** Polyclonal antibody raised in rabbit against human Transcription factor YY1, using two synthetic peptides containing a sequence from the central part and the C-terminus of the protein, respectively.

### Applications

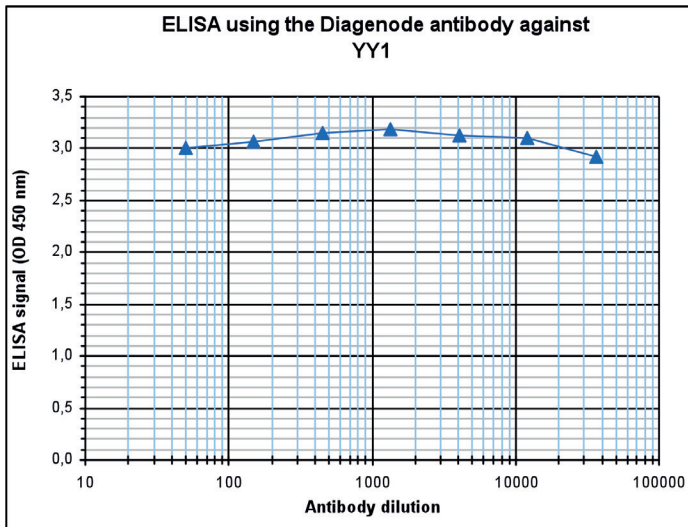
Applications	Suggested dilution	References
ChIP*	1 µg per ChIP	Fig 1, 2
ELISA	1:10,000 - 1:100,000	Fig 3
WB	1:1,000	Fig 4

\*Please note that the optimal antibody amount per ChIP should be determined by the end-user. We recommend testing 1-5 µg per ChIP.

### Target description

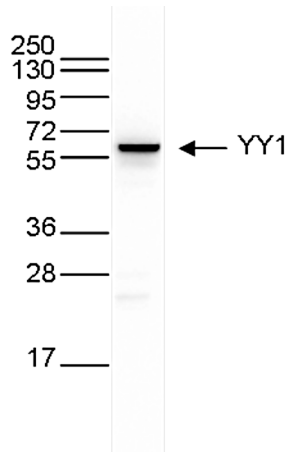
YY1 (UniProtKB/Swiss-Prot entry P25490) is a ubiquitously distributed transcription factor which can both activate or repress a large number of cellular and viral genes by binding to sites overlapping the transcription start site. Whether it activates or represses transcription depends upon the context in which it binds. YY1 is thought to direct histone deacetylases and histone acetyltransferases to the promoters of its target genes in order to activate or repress transcription, thus implicating histone modification in the function of YY1.





**Figure 3. Determination of the antibody titer**

To determine the titer of the antibody, an ELISA was performed using a serial dilution of Diagenode antibody directed against YY1 (Cat. No. C15410345). The plates were coated with the peptides used for immunization of the rabbit. By plotting the absorbance against the antibody dilution (Figure 3), the titer of the antibody was estimated to be >1:1,000,000.



**Figure 4. Western blot analysis using the Diagenode antibody directed against YY1**

Whole cell extracts from K562 cells were analysed by Western blot using the Diagenode antibody against YY1 (Cat. No. C15410345) diluted 1:1,000 in TBS-Tween containing 5% skimmed milk. The position of the protein of interest is indicated on the right; the marker (in kDa) is shown on the left.

**Diagenode sa. BELGIUM | EUROPE**

LIEGE SCIENCE PARK  
Rue du Bois Saint-Jean, 3  
4102 Seraing - Belgium  
Tel: +32 4 364 20 50  
Fax: +32 4 364 20 51  
orders@diagenode.com  
info@diagenode.com

**Diagenode Inc. USA | NORTH AMERICA**

400 Morris Avenue, Suite 101  
Denville, NJ 07834 - USA  
Tel: +1 862 209-4680  
Fax: +1 862 209-4681  
orders.na@diagenode.com  
info.na@diagenode.com

**Last update:** November 21, 2017