

## UHRF1 polyclonal antibody - Classic

**Cat. No.** C15410258

**Type:** Polyclonal

**Source:** Rabbit

**Lot #:** 40583

**Size:** 25 µl/100 µl

**Concentration:** 1 µg/µl

**Specificity:** Human.

**Purity:** Purified by peptide affinity chromatography.

**Storage:** Store at -20°C; for long storage, store at -80°C. Avoid multiple freeze-thaw cycles.

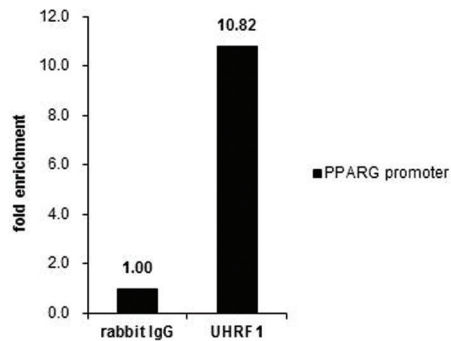
**Precautions:** This product is for research use only. Not for use in diagnostic or therapeutic procedures.

### Applications

	Suggested dilution*	Results
ChIP assay	5 µg/ChIP	Figure 1
ICC/IF	1:100-1:1,000	Figure 5
IHC	1:100-1:1,000	Figure 4
Immunoprecipitation	1:100-1:500	Figure 2
Western blot	1:500-1:3,000	Figure 3

\*Optimal dilutions/concentrations should be determined by the researcher.

### Results

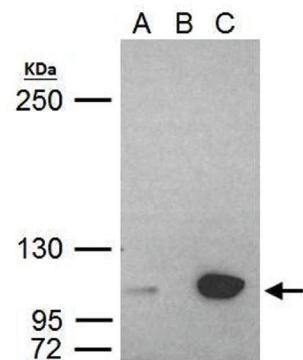


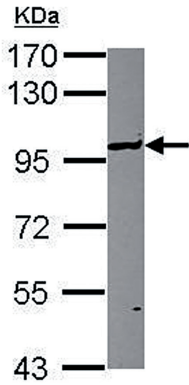
**Figure 1. UHRF1 ChIP results**

ChIP was performed with HCT116 chromatin extract and 5 µg of either control rabbit IgG or UHRF1 antibody. The precipitated DNA was detected by PCR with primer set targeting to PPARG promoter.

**Figure 2. IP results**

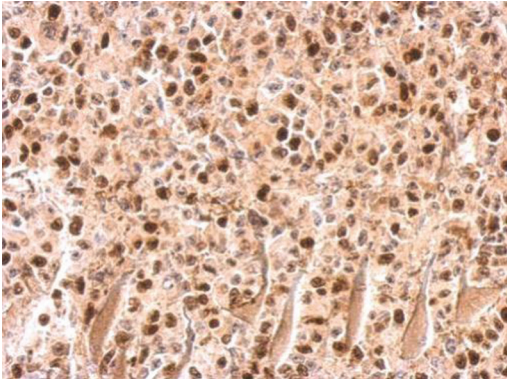
UHRF1 antibody immunoprecipitates UHRF1 protein in IP experiments. IP Sample: HeLa whole cell extract A. 40 µg HeLa whole cell extract B. Control with 2 µg of preimmune rabbit IgG C. Immunoprecipitation of UHRF1 protein by 2 µg of UHRF1 antibody (C15410258) 5% SDS-PAGE The immunoprecipitated UHRF1 protein was detected by western blot with the UHRF1 antibody (C15410258) diluted 1:1,000.





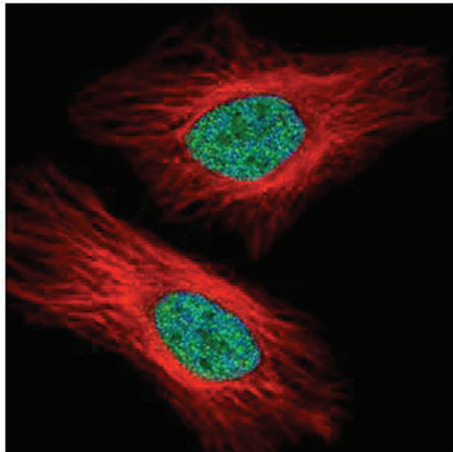
**Figure 3. Western blot**

Sample: 30 µg of HCT116 whole cell lysate  
7.5% SDS PAGE  
UHRF1 diluted 1:1,000



**Figure 4. IHC**

UHRF1 antibody detects UHRF1 protein on HBL435 xenograft by immunohistochemical analysis.  
Sample: Paraffin-embedded HBL435 xenograft.  
UHRF1 antibody (C15410258) dilution: 1:500.



**Figure 5. IFA**

Confocal immunofluorescence analysis of paraformaldehyde-fixed HeLa cells using UHRF1 antibody (Cat. No. C15410258) (Green) at a 1:500 dilution.  
Red: Alpha-tubulin filaments.

**Diagenode sa. BELGIUM | EUROPE**

LIEGE SCIENCE PARK  
Rue Bois Saint-Jean, 3  
4102 Seraing (Ougrée) - Belgium  
Tel: +32 4 364 20 50  
Fax: +32 4 364 20 51  
orders@diagenode.com  
info@diagenode.com

**Diagenode Inc. USA | NORTH AMERICA**

400 Morris Avenue, Suite 101  
Denville, NJ 07834 - USA  
Tel: +1 862 209-4680  
Fax: +1 862 209-4681  
orders.na@diagenode.com  
info.na@diagenode.com

**Last update:** September 12, 2014