

## THOC1 polyclonal antibody - Classic

**Cat. No.** C15410243

**Type:** Polyclonal

**Source:** Rabbit

**Lot #:** 40163

**Size:** 25 µl/100 µl

**Concentration:** 1 µg/µl

**Specificity:** Human, mouse

**Purity:** Purified by peptide affinity chromatography.

**Storage:** Store at -20°C; for long storage, store at -80°C.  
Avoid multiple freeze-thaw cycles.

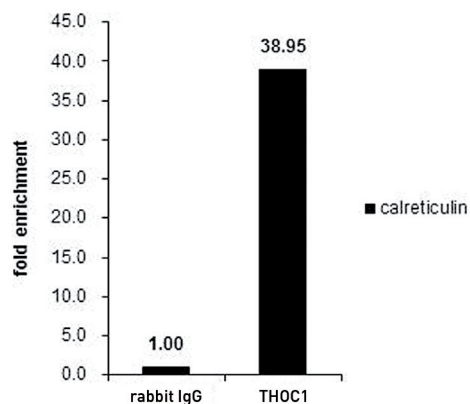
**Precautions:** This product is for research use only. Not for use in diagnostic or therapeutic procedures.

### Applications

	Suggested dilution*	Results
ChIP assay	5 µg/ChIP	Figure 1
ICC/IF	1:100-1:1,000	Figure 3
IHC	1:100-1:1,000	Figure 4
Immunoprecipitation	1:100-1:500	Figure 2
Western blot	1:500-1:3,000	Figure 5

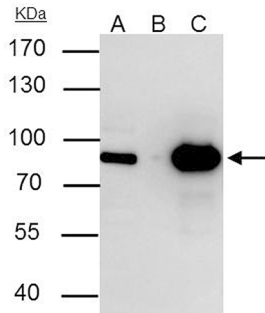
\*Optimal dilutions/concentrations should be determined by the researcher.

### Results



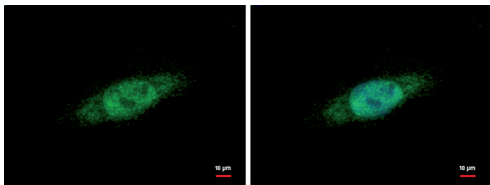
**Figure 1. THOC1 ChIP results**

ChIP was performed with HeLa chromatin extract and 5 µg of either control rabbit IgG or THOC1 antibody. The precipitated DNA was detected by PCR with primer set targeting to calreticulin.



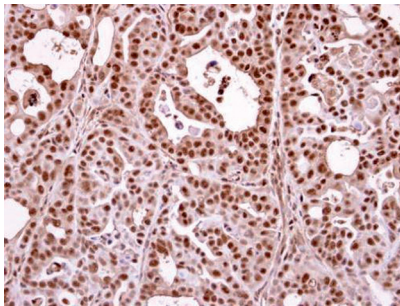
**Figure 2. THOC1 IP results**

THOC1 immunoprecipitates THOC1 (p84) protein in IP experiments. IP Sample: HepG2 whole cell extract A: 30 µg whole cell extract of THOC1 protein expressing HepG2 cells B: Control with 3 µg of pre-immune rabbit IgG C: Immunoprecipitation of THOC1 by 3 µg of THOC1 antibody. The immunoprecipitated THOC1 protein was detected by western blot with the THOC1 antibody diluted 1:1,000.



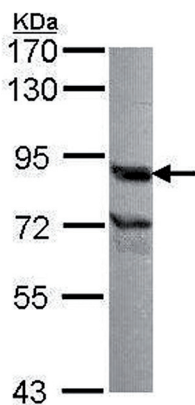
**Figure 3. THOC1 IF results**

THOC1 antibody detects THOC1 protein at cytoplasm and nucleus by immunofluorescent analysis. Sample: HeLa cells were fixed in 4% paraformaldehyde at RT for 15 min. Green: THOC1 protein stained by THOC1 antibody diluted 1:500. Blue: Hoechst 33342 staining.



**Figure 4. THOC1 IHC results**

Immunohistochemical analysis of paraffin-embedded NCIN87 xenograft, using THOC1 antibody at a 1:500 dilution.



**Figure 5. THOC1 Western blot results**

Sample: 30 µg of A549 whole cell lysate  
7.5% SDS PAGE  
THOC1 antibody diluted 1:1,000