

## TFIIF polyclonal antibody - Classic

**Cat. No.** C15410256

**Type:** Polyclonal

**Source:** Rabbit

**Lot #:** 40723

**Size:** 25 µl/100 µl

**Concentration:** 1 µg/µl

**Specificity:** Human,mouse.

**Purity:** Purified by peptide affinity chromatography.

**Storage:** Store at -20°C; for long storage, store at -80°C. Avoid multiple freeze-thaw cycles.

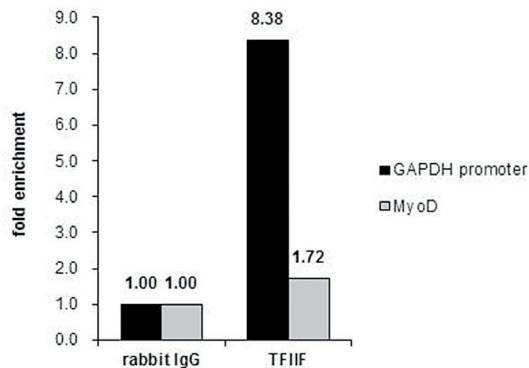
**Precautions:** This product is for research use only. Not for use in diagnostic or therapeutic procedures.

### Applications

	Suggested dilution*	Results
ChIP assay	5 µg/ChIP	Figure 1
Immunoprecipitation	1:100-1:500	Figure 2
Western blot	1:500-1:3000	Figure 3,4

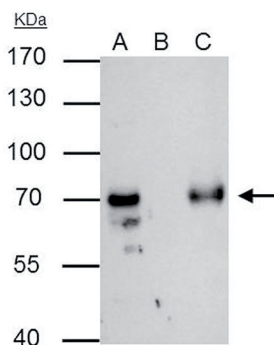
\*Optimal dilutions/concentrations should be determined by the researcher.

### Results



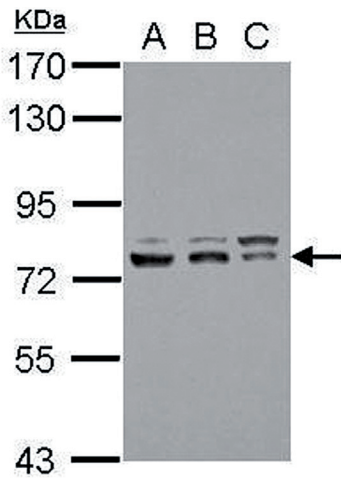
**Figure 1. TFIIF ChIP results**

ChIP was performed with HeLa chromatin extract and 5 µg of either control rabbit IgG or TFIIF antibody. The precipitated DNA was detected by PCR with primer set targeting to GAPDH promoter or MyoD.



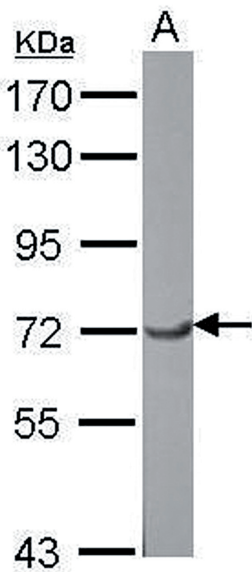
**Figure 2. TFIIF IP results**

TFIIF antibody immunoprecipitates TFIIF protein in IP experiments. IP Sample: 293T whole cell extract A: 30 µg whole cell extract of TFIIF protein expressing 293T cells B: Control with 2.5 µg of pre-immune rabbit IgG C: Immunoprecipitation of TFIIF with 2.5 µg of TFIIF antibody [C15410256] The immunoprecipitated TFIIF protein was detected by western blot with the TFIIF antibody diluted 1:1,000.



**Figure 3. Western blot**

Sample: 30 µg of whole cell lysate  
A: 293T  
B: A431  
C: HeLa  
7.5% SDS PAGE  
TFIIIF antibody dilution 1:3,000



**Figure 4. Western blot**

Sample: 30 µg of NIH-3T3 whole cell lysate  
7.5% SDS PAGE  
TFIIIF antibody dilution 1:3,000

**Diagenode sa. BELGIUM | EUROPE**

LIEGE SCIENCE PARK  
Rue Bois Saint-Jean, 3  
4102 Seraing (Ougrée) - Belgium  
Tel: +32 4 364 20 50  
Fax: +32 4 364 20 51  
orders@diagenode.com  
info@diagenode.com

**Diagenode Inc. USA | NORTH AMERICA**

400 Morris Avenue, Suite 101  
Denville, NJ 07834 - USA  
Tel: +1 862 209-4680  
Fax: +1 862 209-4681  
orders.na@diagenode.com  
info.na@diagenode.com

**Last update:** September 12, 2014