

TET2 polyclonal antibody - Classic

Cat. No. C15410255

Type: Polyclonal

Source: Rabbit

Lot #: 41458

Size: 25 µl/100 µl

Concentration: 1 µg/µl

Specificity: Human.

Purity: Purified by peptide affinity chromatography.

Storage: Store at -20°C; for long storage, store at -80°C. Avoid multiple freeze-thaw cycles.

Precautions: This product is for research use only. Not for use in diagnostic or therapeutic procedures.

Applications

	Suggested dilution*	Results
ChIP assay	5 µg/ChIP	Figure 1
ICC/IF	1:100-1:1,000	Figure 3
Immunoprecipitation	1:100-1:500	Figure 2
Western blot	1:1,000-1:10,000	Figure 4

*Optimal dilutions/concentrations should be determined by the researcher.

Results

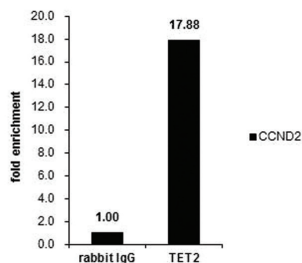


Figure 1. TET2 ChIP results

ChIP was performed with U2OS chromatin extract and 5 µg of either control rabbit IgG or TET2 antibody. The precipitated DNA was detected by PCR with primer set targeting to CCND2.

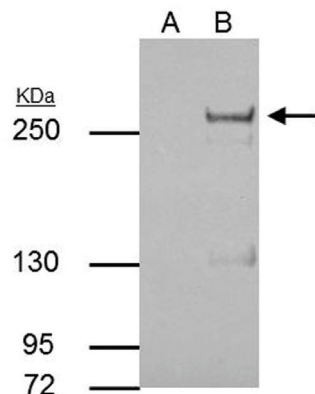


Figure 2. TET2 IP results

TET2 antibody immunoprecipitates TET2 protein in IP experiments. IP samples: 30 µg whole cell extract of TET2-transfected 293T cells. A. Control with 3 µg of preimmune Rabbit IgG. B. Immunoprecipitation of TET2 protein by 3 µg TET2 antibody (Cat. No. C15410255) 5 % SDS-PAGE. The immunoprecipitated TET2 protein was detected by TET2 antibody diluted 1:3,000.

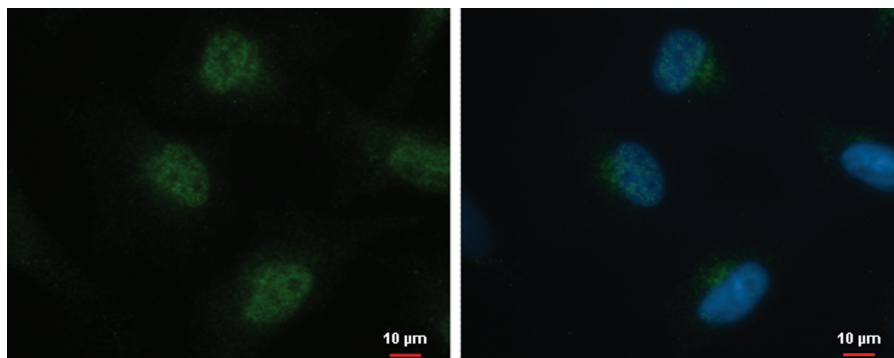


Figure 3. TET2 IF results

TET2 antibody detects TET2 protein in the nucleus by immunofluorescent analysis.
Sample: HeLa cells were fixed in 4% paraformaldehyde at RT for 15 min.
Green: TET2 protein stained by TET2 antibody (Cat. No. C15410255) diluted 1:500.
Blue: Hoechst 33342 staining.

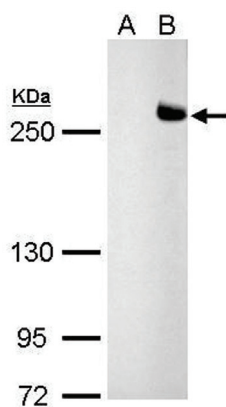


Figure 4. TET2 Western blot results

TET2 antibody detects TET2 protein by Western blot analysis.
A. 30 µg 293T whole cell extract
B. 30 µg whole cell extract of human TET2-transfected 293T cells
5 % SDS-PAGE
TET2 antibody (Cat. No. C15410255) dilution: 1:5000

Diagenode sa. BELGIUM | EUROPE

LIEGE SCIENCE PARK
Rue Bois Saint-Jean, 3
4102 Seraing (Ougrée) - Belgium
Tel: +32 4 364 20 50
Fax: +32 4 364 20 51
orders@diagenode.com
info@diagenode.com

Diagenode Inc. USA | NORTH AMERICA

400 Morris Avenue, Suite 101
Denville, NJ 07834 - USA
Tel: +1 862 209-4680
Fax: +1 862 209-4681
orders.na@diagenode.com
info.na@diagenode.com

Last update: September 12, 2014