

PRODUCT NAME		
TASP1 polyclonal antibody		
Other names: Taspase1		
Cat. No. C15310115 (CS-115-100)	Type: Polyclonal	Size: 100 µl
Lot #: A175-001	Source: Rabbit	Concentration: not determined

Description: Polyclonal antibody raised in rabbit against mouse human TASP1 (Threonine aspartase 1), using three KLH-conjugated synthetic peptides: two containing an amino acid sequence from the N-terminal part of the protein and one containing an amino acid sequence from the central part of the protein.

Specificity: Human: positive
Other species: not tested

Applications	Suggested dilution	References
ELISA	1:1,000	Fig 1
Western blotting	1:500	Fig 2

Purity: Whole antiserum from rabbit containing 0.05% azide.

Storage: Store at -20°C; for long storage, store at -80°C. Avoid multiple freeze-thaw cycles.

Precautions: This product is for research use only. Not for use in diagnostic or therapeutic procedures.

Last data sheet update: April 6, 2010

Target description

TASP1 (UniProt/Swiss-Prot entry Q9H6P5) is an endopeptidase which cleaves specific substrates after an aspartate residue. It is required for the posttranslational processing of MLL, a histone methyl transferase which is essential for the maintenance of HOX gene expression and for the transcription factor TFIIA. Therefore, TASP1 may have an important function in the regulation of gene transcription and embryonic development.

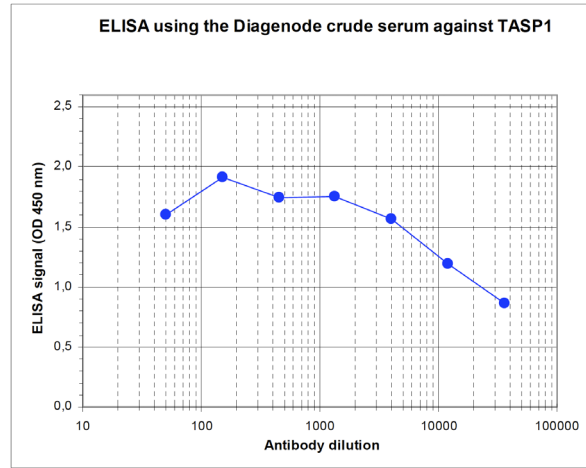


Figure 1
Determination of the titer

To determine the titer, an ELISA was performed using a serial dilution of the Diagenode antibody directed against human TASP1 (Cat. No. CS-115-100). The plates were coated with a mix of the peptides used for immunization of the rabbit. By plotting the absorbance against the antibody dilution (Figure 1), the titer of the antibody was estimated to be 1:43,500.

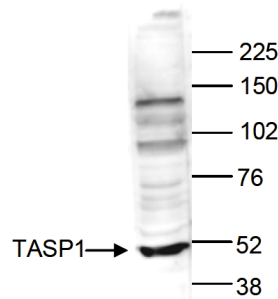


Figure 2
Western blot analysis using the Diagenode antibody directed against TASP1

Nuclear extracts of HeLa cells (40 µg) were analysed by Western blot using the Diagenode antibody against TASP1 (Cat. No. CS-115-100) diluted 1:500 in TBS-Tween containing 5% skimmed milk. The position of the protein of interest (expected size: 44.5 kDa) is indicated on the left; the marker (in kDa) is shown on the right.