

PRODUCT NAME		
TAF1 polyclonal antibody		
Other names: TAF(II)250, TBP-associated factor 250 kDa, p250, BA2R, CCG1, CCGS, TAF2A		
Cat. No. CS-072-100	Type: Polyclonal	Size: 100 µl
Lot #: 001	Source: Rabbit	Concentration: not determined

Description: Polyclonal antibody raised in rabbit against human TAF1 (TATA box binding protein (TBP)-associated factor; Transcription initiation factor TFIID subunit 1), using the recombinant double bromodomain module of the protein.

Specificity: Human: positive
Other species: not tested

Applications	Suggested dilution	References
Western blotting	1:1,000	Fig 1

Purity: Whole antiserum from rabbit containing 0.05% azide.

Storage: Store at -20°C; for long storage, store at -80°C. Avoid multiple freeze-thaw cycles.

Precautions: This product is for research use only. Not for use in diagnostic or therapeutic procedures.

Last data sheet update: April 19, 2010

Target description

TAF1 (UniProtKB/Swiss-Prot entry P21675) is the largest component and core scaffold of the TFIID basal transcription factor complex which also includes TBP. The protein is able to autophosphorylate or transphosphorylate other transcription factors such as TP53 on 'Thr-55', leading to MDM2-mediated degradation of TP53, and GTF2A1 and GTF2F1 on Ser residues. TAF1 possesses DNA-binding activity and is essential for progression of the G1 phase of the cell cycle.

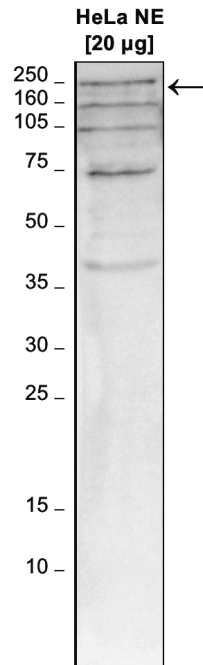


Figure 1

Western blot analysis using the Diagenode antibody directed against TAF1

Western blot was performed on nuclear extracts from HeLa cells (20 µg) with the Diagenode antibody against human Med26 TAF1 (Cat. No. CS-072-100), diluted 1:1,000 in TBS-Tween containing 5% skimmed milk (Figure 2). The molecular weight marker (in kDa) is shown on the left; the location of the protein of interest is indicated on the right.