

TAF1 polyclonal Antibody - Classic

Cat. No. C15410272

Type: Polyclonal

Source: Rabbit

Lot #: 001

Size: 100 µg

Concentration: 1.15 µg/µl

Specificity: Human, mouse, rat

Purity: Affinity purified

Storage: Store at -20°C; for long storage, store at -80°C. Avoid multiple freeze-thaw cycles.

Precautions: This product is for research use only. Not for use in diagnostic or therapeutic procedures.

Applications

| | Suggested dilution | Results |
|---------------------|---------------------|----------|
| ELISA | 1:10,000 - 1:50,000 | |
| Western blot | 1:100 - 1:2,000 | Figure 1 |
| Immunocytochemistry | 10 µg/ml | Figure 2 |

Target description

Transcription Initiation Factor TFIID Subunit 1 (TAF1) is the largest component and core scaffold of the TFIID basal transcription factor complex, which also includes TATA-binding protein (TBP) and a variety of TBP-associated factors. TFIID nucleates the formation of transcription pre-initiation complexes and plays a key role in the regulation of gene expression by RNA polymerase II. TAF1 possesses DNA-binding activity and also contains novel N- and C-terminal Ser/Thr kinase domains which can auto-phosphorylate or trans-phosphorylate other transcription factors. For example, TAF1 interacts with the C-terminus of TP53 and phosphorylates the T55 residue, leading to MDM2-mediated degradation of TP53. TAF1 also catalyzes Ser phosphorylation of general transcription factor IIA (GTF2A1) and IIF (GTF2F1). The retinoblastoma tumor suppressor protein, RB1, interacts with the N-terminal domain of TAF1 and inhibits its intrinsic kinase activity. TAF1 is essential for progression through the G1 phase of the cell cycle and has been reported to be indispensable for expression of 18% of mammalian genes.

Results

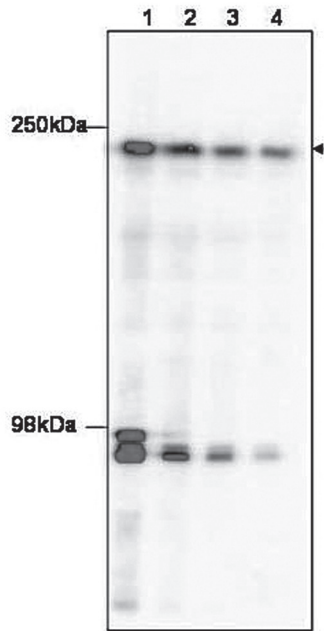


Figure 1. TAF1 antibody Western blot results

Western blot using the Diagenode TAF1 antibody to detect TAF1 in HeLa nuclear extract (arrowhead). The membrane was probed with the primary antibody at dilutions of 1:100 (lane 1), 1:250 (lane 2), 1: 500 (Lane 3) and 1:1,000 (Lane 4). The identity of the bands at ~95 kDa is unknown, but may be degraded TAF1.

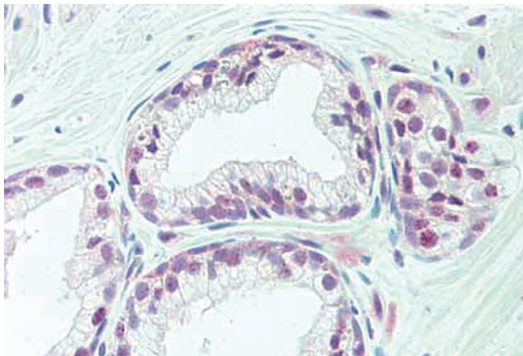


Figure 2. TAF1 antibody Immunohistochemistry results

Immunohistochemistry of TAF1 antibody. Tissue: prostate. Fixation: formalin fixed paraffin embedded. Primary antibody: TAF1 at 10 µg/mL for 1h at RT. Secondary antibody: Peroxidase rabbit secondary antibody at 1:10,000 dilution for 45 min at RT. Staining: TAF1 as precipitated red signal with hematoxylin purple nuclear counterstain.

Diagenode sa. BELGIUM | EUROPE

LIEGE SCIENCE PARK
Rue Bois Saint-Jean, 3
4102 Seraing (Ougrée) - Belgium
Tel: +32 4 364 20 50
Fax: +32 4 364 20 51
orders@diagenode.com
info@diagenode.com

Diagenode Inc. USA | NORTH AMERICA

400 Morris Avenue, Suite 101
Denville, NJ 07834 - USA
Tel: +1 862 209-4680
Fax: +1 862 209-4681
orders.na@diagenode.com
info.na@diagenode.com

Last update: September 10, 2014