

PRODUCT NAME		
Suz12 pIyclonal antibody		
Other names: CHET9, JJAZ1		
<b>Cat. No.</b> C15310029 (CS-029-100)	<b>Type:</b> Polyclonal	<b>Size:</b> 100 µl
<b>Lot #:</b> 001	<b>Source:</b> Rabbit	<b>Concentration:</b> not determined

**Description:** Polyclonal antibody raised in rabbit against the N-terminus of recombinant human Suz12 protein (Suppressor of Zeste 12 protein homolog).

**Specificity:** Human and mouse: positive  
Other species: not tested

Applications	Suggested dilution	References
Western blotting	1:1,000	Fig 1
ChIP	5 µl/ChIP	Data not shown

**Purity:** Whole antiserum from rabbit containing 0.05% azide.

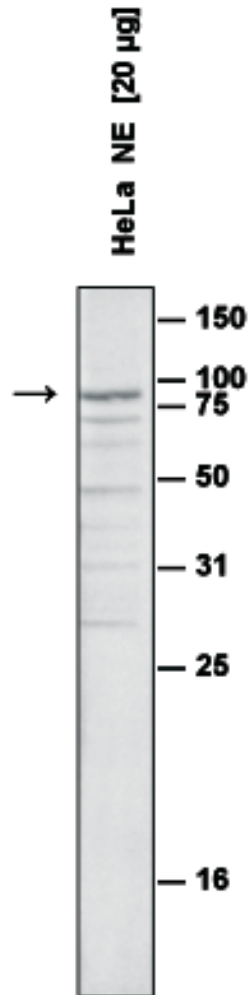
**Storage:** Store at -20°C; for long storage, store at -80°C. Avoid multiple freeze-thaw cycles.

**Precautions:** This product is for research use only. Not for use in diagnostic or therapeutic procedures.

**Last data sheet update:** April 12, 2010

**Target description**

Suz12 (UniProtKB/Swiss-Prot entry Q15022) is a Polycomb group (PcG) protein. These proteins form multiprotein complexes, which keep homeotic genes in a transcriptionally repressive state throughout development. PcG proteins are not required to initiate repression, but maintain it during later stages of development. They probably act via the methylation of histones. Suz12 is a component of the PRC2 complex, which is composed of EED, EZH2, SUZ12/JJAZ1, RBBP4 and RBBP7, and methylates 'Lys-9' and 'Lys-27' of histone H3.



**Figure 1**

**Western blot analysis using the Diagenode antibody directed against Suz12**

Western blot was performed on nuclear extracts from HeLa cells (HeLa NE, 20 µg) using the Diagenode antibody against Suz12 [cat# CS-029-100] diluted 1:1,000 in TBS-Tween containing 5% skimmed milk. A molecular weight marker (in kDa) is shown on the right; the location of the protein of interest is indicated on the left.