

PRODUCT NAME		
Setd1b polyclonal antibody		
Other names: SET1B, KMT2G		
Cat. No. C15310118 (CS-118-100)	Type: Polyclonal	Size: 100 µl
Lot #: A278-004	Source: Rabbit	Concentration: not determined

Description: Polyclonal antibody raised in rabbit against mouse Setd1b (Set domain containing 1B), using a 3 KLH-conjugated synthetic peptides containing sequences from the central part of the protein (1).

Specificity: Mouse: positive
Other species: not tested

Applications	Suggested dilution	References
ELISA	1:100 – 1:500	Fig 1
Western blotting	1:500	Fig 2 (1)

Purity: Whole antiserum from rabbit containing 0.05% azide.

Storage: Store at -20°C; for long storage, store at -80°C. Avoid multiple freeze-thaw cycles.

Precautions: This product is for research use only. Not for use in diagnostic or therapeutic procedures.

References:

(1) Peptide design by Andrea Kranz, Western blot analysis by Heike Petzold and Andrea Kranz, BIOTEC, Dept. of Genomics, Prof. A. F. Stewart, TU Dresden, Tatzberg 47/49, 01307 Dresden, Germany

Last data sheet update: March 23, 2010

Target description

SETD1B (UniProt/Swiss-Prot entry Q9UPS6) is a component of the SET1 histone methyltransferase (HMT) complex. This complex specifically methylates lysine 4 of histone H3, but only if the neighboring lysine 9 residue is not yet methylated. Methylation of H3K4 represents a specific tag for epigenetic transcriptional activation. SETD1B shows a non-overlapping localization with SETD1A, suggesting that both proteins play a specific role in the epigenetic control of chromatin structure and gene expression.

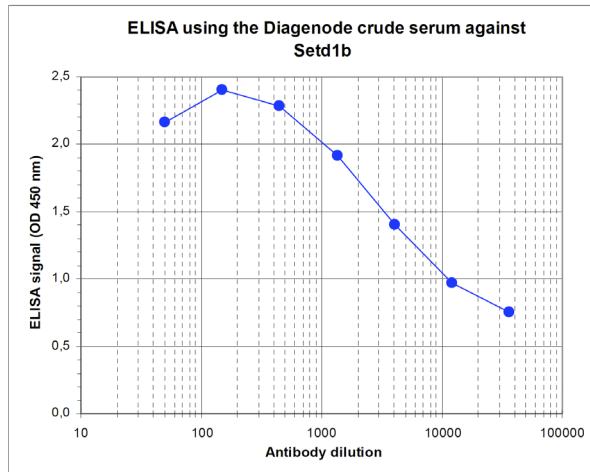


Figure 1
Determination of the titer

To determine the titer, an ELISA was performed using a serial dilution of the Diagenode antibody directed against mouse Setd1b (Cat. No. CS-118-100). The plates were coated with a mix of the peptides used for immunization of the rabbit. By plotting the absorbance against the antibody dilution (Figure 1), the titer of the antibody was estimated to be 1:8,400.

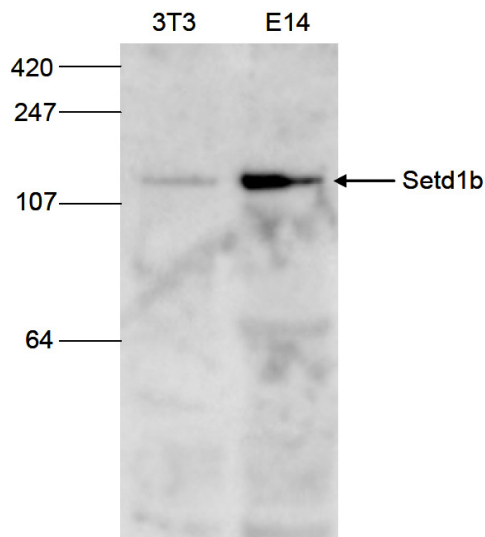


Figure 2
Western blot analysis using the Diagenode antibody directed against mouse Setd1b (1)

Western blot was performed on whole cell lysates from mouse fibroblasts (NIH3T3) and embryonic stem cells (E14Tg2a) with the Diagenode antibody against mouse Setd1b (Cat. No. CS-118-100), diluted 1:500 in BSA/PBS-Tween. The molecular weight marker (in kDa) is shown on the left; the location of the protein of interest is indicated on the right.