

PRODUCT NAME		
Set9 polyclonal antibody		
Other names: SET7, SET7/9, KMT7, H3-K4-HMTase		
Cat. No. C15410047 (pAb-047-050)	Type: Polyclonal ChIP-grade	Size: 50 µg/ 25 µl
Lot #: 001	Source: Rabbit	Concentration: 2.0 µg/µl

Description: Polyclonal antibody raised in rabbit against human Set9 (SET domain containing (lysine methyltransferase) 9), using a recombinant protein.

Specificity: Human: positive
Other species: not tested

Applications	Suggested dilution	References
Western blotting	1:1,000	Fig1

Purity: Protein G purified polyclonal antibody in PBS containing 0.05% azide and 0.05% ProClin 300.

Storage: Store at -20°C; for long storage, store at -80°C. Avoid multiple freeze-thaw cycles.

Precautions: This product is for research use only. Not for use in diagnostic or therapeutic procedures.

Last data sheet update: April 12, 2010

Target description

Set9 (UniProtKB/Swiss-Prot entry Q8WTS6) is a histone methyltransferase which specifically methylates lysine 4 of histone H3 being a specific tag for epigenetic transcriptional activation. Further, methylation of histone H3K4 by Set9 precludes deacetylation of H3 by the NuRD complex and impairs Suv39h1-mediated methylation of H3K9. Set9 also methylates the tumor suppressor p53 at lysine 372, thereby enhancing its stability. It contains a SET domain but lacks the pre- and post-SET domains.).

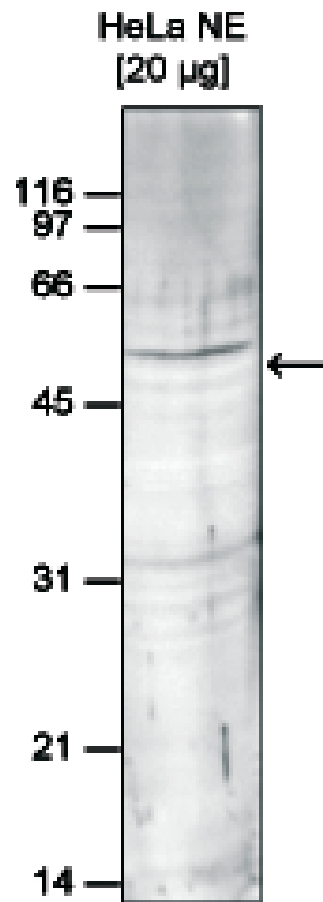


Figure 1

Western blot analysis using the Diagenode antibody directed against Set9

HeLa nuclear extracts (HeLa NE, 20 µg) were analysed by Western blot using the Diagenode antibody against Set9 [Cat. No. pAb-047-050] diluted 1:1,000 in TBS-Tween containing 5% skimmed milk. A molecular weight marker (in kDa) is shown on the left; the location of the protein of interest is indicated on the right.