

PRODUCT NAME		
SSRP1 polyclonal antibody		
Other names: FACT80, FACTp80		
<b>Cat. No.</b> C15310050 (CS-050-100)	<b>Type:</b> Polyclonal	<b>Size:</b> 100 µl
<b>Lot #:</b> 001	<b>Source:</b> Rabbit	<b>Concentration:</b> not determined

**Description:** Polyclonal antibody raised in rabbit against human SSRP1 (Structure-specific recognition protein 1), the GST tagged N-terminal part of the protein.

**Specificity:** Human: positive  
Other species: not tested

Applications	Suggested dilution	References
Western blotting	1:1,000	Fig 1

**Purity:** Whole antiserum from rabbit containing 0.05% azide.

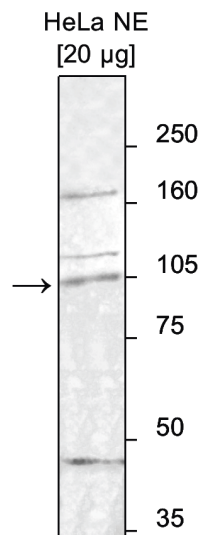
**Storage:** Store at -20°C; for long storage, store at -80°C. Avoid multiple freeze-thaw cycles.

**Precautions:** This product is for research use only. Not for use in diagnostic or therapeutic procedures.

**Last data sheet update:** April 19, 2010

**Target description**

SSRP1 (UniProtKB/Swiss-Prot entry Q08945) is a component of the FACT complex, a general chromatin factor that acts to reorganize nucleosomes. The FACT complex, which besides SSRP1 also contains SUPT16H (SPT16) is involved in multiple processes that require DNA as a template such as mRNA elongation, DNA replication and DNA repair. During transcription elongation the FACT complex acts as a histone chaperone that both destabilizes and restores nucleosomal structure. It facilitates the passage of RNA polymerase II and transcription by promoting the dissociation of one histone H2A-H2B dimer from the nucleosome, subsequently promoting the reestablishment of the nucleosome following the passage of RNA polymerase II. The FACT complex is probably also involved in phosphorylation of 'Ser-392' of p53/TP53 via its association with CK2 (casein kinase II). SSRP1 binds specifically to double-stranded DNA and at low levels to DNA modified by the antitumor agent cisplatin. SSRP1 may potentiate cisplatin-induced cell death by blocking replication and repair of modified DNA. SSRP1 also acts as a transcriptional coactivator for p63/TP73L.



**Figure 1**

**Western blot analysis using the Diagenode antibody directed against hSSRP1**

Western blot was performed on nuclear extracts from HeLa cells (20 µg) using the Diagenode antibody against SSRP1 (cat# CS-050-100) diluted 1:1,000 in TBS-Tween containing 5% skimmed milk. A molecular weight marker (in kDa) is shown on the right. The location of the protein of interest is indicated by an arrow.