

PRODUCT NAME		
<b>SPT16 polyclonal antibody</b>		
Other names: SUPT16H, FACT140, CDC68, FACTP140		
<b>Cat. No.</b> C15310049 (CS-049-100)	<b>Type:</b> Polyclonal	<b>Size:</b> 100 µl
<b>Lot #:</b> 001	<b>Source:</b> Rabbit	<b>Concentration:</b> not determined

**Description:** Polyclonal antibody raised in rabbit against human SPT16 (Suppressor of Ty 16 homolog), using a recombinant protein containing amino-acids 276 to 572.

**Specificity:** Human: positive  
Other species: not tested

Applications	Suggested dilution	References
Western blotting	1:1,000	Fig 1

**Purity:** Whole antiserum from rabbit containing 0.05% azide.

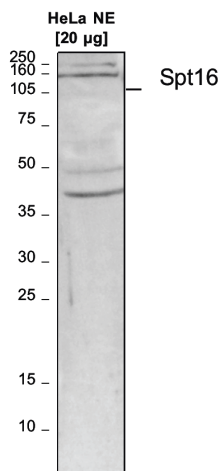
**Storage:** Store at -20°C; for long storage, store at -80°C. Avoid multiple freeze-thaw cycles.

**Precautions:** This product is for research use only. Not for use in diagnostic or therapeutic procedures.

**Last data sheet update:** April 21, 2010

#### Target description

SPT16 (UniProtKB/Swiss-Prot entry Q9Y5B9) is a component of the FACT complex, a general chromatin factor that acts to reorganize nucleosomes. The FACT complex is involved in multiple processes that require DNA as a template such as mRNA elongation, DNA replication and DNA repair. During transcription elongation the FACT complex acts as a histone chaperone that both destabilizes and restores nucleosomal structure. SPT16 facilitates the passage of RNA polymerase II and transcription by promoting the dissociation of one histone H2A-H2B dimer from the nucleosome and subsequently promotes the reestablishment of the nucleosome. The FACT complex is probably also involved in phosphorylation of 'Ser-392' of p53/TP53 via its association with casein kinase II.



**Figure 1**

**Western blot analysis using the Diagenode antibody directed against SPT16v**

HeLa nuclear extracts (HeLa NE, 20 µg) were analysed by Western blot using the Diagenode antibody against SPT16 (cat# CS-049-100) diluted 1:1,000 in TBS-Tween containing 5% skimmed milk. The location of the protein of interest is indicated on the right; the molecular weight marker is shown on the left.