

## SMAD3 polyclonal antibody - Classic

**Cat. No.** C15410252

**Type:** Polyclonal

**Source:** Rabbit

**Lot #:** 40044

**Size:** 25 µl/100 µl

**Concentration:** 0.78 µg/µl

**Specificity:** Human.

**Purity:** Purified by antigen-affinity chromatography.

**Storage:** Store at -20°C; for long storage, store at -80°C. Avoid multiple freeze-thaw cycles.

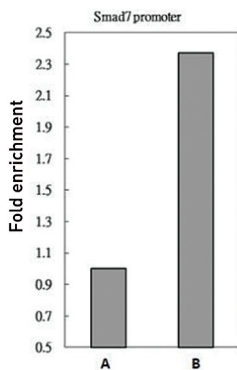
**Precautions:** This product is for research use only. Not for use in diagnostic or therapeutic procedures.

### Applications

	Suggested dilution*	Results
ChIP assay	5 µg/ChIP	Figure 1
ICC/IF	1:100-1:1,000	Figure 3
IHC	1:500	Figure 5
Immunoprecipitation	1:500-1:1,000	Figure 2
Western blot	1:500-1:3,000	Figure 4

\*Optimal dilutions/concentrations should be determined by the researcher.

### Results

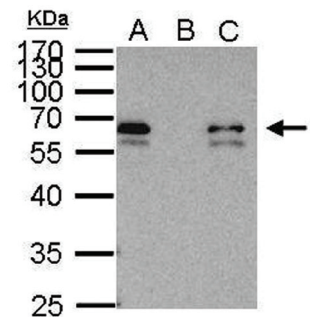


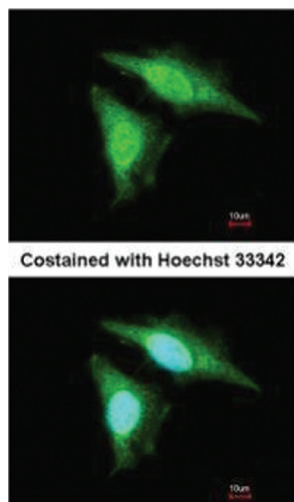
**Figure 1. ChIP**

SMAD3 antibody immunoprecipitates SMAD3 protein-DNA in ChIP experiments. ChIP Sample: HeLa chromatin extract A. 5 µg preimmune rabbit IgG B. 5 µg of SMAD3 antibody (C15410252) The precipitated DNA was detected by PCR with primer set targeting to SMAD7 promoter.

**Figure 2. Immunoprecipitation**

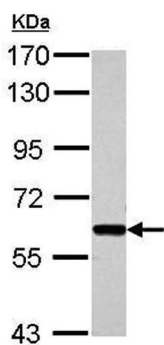
SMAD3 antibody immunoprecipitates SMAD3 protein in IP experiments. IP Sample: 1000 µg HeLa whole cell extract A. 50 µg HeLa whole cell extract B. Control with 2 µg of preimmune rabbit IgG C. Immunoprecipitation of SMAD3 protein by 2 µg of SMAD3 antibody (C15410252). The immunoprecipitated SMAD3 protein was detected by western blot with the SMAD3 antibody (C15410252) diluted 1:1,000.





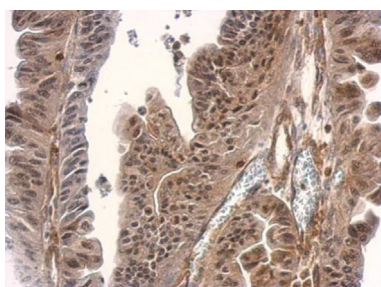
**Figure 3. Immunofluorescence**

Immunofluorescence analysis of paraformaldehyde-fixed HeLa cells using SMAD3 (C15410252) antibody at a 1:200 dilution.



**Figure 4. Western Blot**

Sample: 30 µg of Jurkat whole cell lysate  
7.5% SDS PAGE  
C15410252 diluted 1:5,000



**Figure 5. Immunohistochemistry**

SMAD3 antibody detects SMAD3 protein at cytosol and nucleus on gastric carcinoma by immunohistochemical analysis.

Sample: Paraffin-embedded gastric carcinoma.  
SMAD3 antibody (C15410252) dilution: 1:500.