

## SMAD2 polyclonal antibody - Classic

**Cat. No.** C15410251

**Type:** Polyclonal

**Source:** Rabbit

**Lot #:** 40044

**Size:** 25 µl/100 µl

**Concentration:** 1 µg/µl

**Specificity:** Human.

**Purity:** Purified by antigen-affinity chromatography.

**Storage:** Store at -20°C; for long storage, store at -80°C. Avoid multiple freeze-thaw cycles.

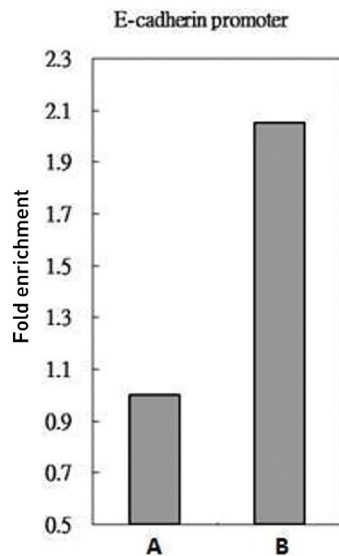
**Precautions:** This product is for research use only. Not for use in diagnostic or therapeutic procedures.

### Applications

	Suggested dilution*	Results
ChIP assay	5 µg/ChIP	Figure 1
ICC/IF	1:100-1:1,000	Figure 3
Immunoprecipitation	1:500-1:1,000	Figure 2
Western blot	1:500-1:3,000	Figure 4

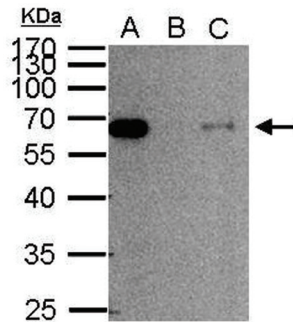
\*Optimal dilutions/concentrations should be determined by the researcher.

### Results



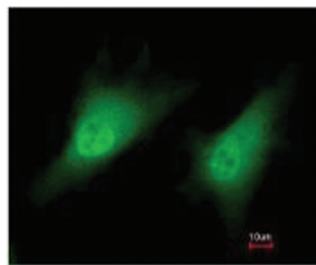
**Figure 1. ChIP**

SMAD2 antibody immunoprecipitates SMAD2 protein-DNA in ChIP experiments. ChIP Sample: HeLa chromatin extract A. 5 µg preimmune rabbit IgG B. 5 µg of SMAD2 antibody (C15410251). The precipitated DNA was detected by PCR with primer set targeting to E-cadherin promoter.

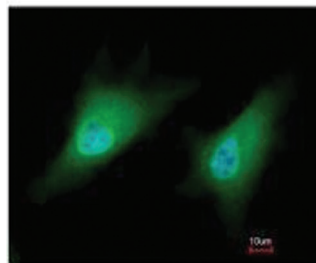


**Figure 2. Immunoprecipitation**

SMAD2 antibody immunoprecipitates SMAD2 protein in IP experiments. IP Sample: 1000 µg HeLa whole cell extract A. 50 µg HeLa whole cell extract B. Control with 2 µg of preimmune rabbit IgG C. Immunoprecipitation of SMAD2 protein by 2 µg of SMAD2 antibody (Cat. No. C15410251). The immunoprecipitated SMAD2 protein was detected by western blot with the SMAD2 antibody diluted 1:1,000.

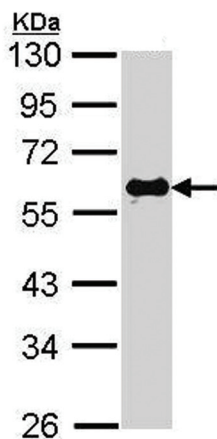


Costained with Hoechst 33342



**Figure 3. Immunofluorescence**

Immunofluorescence analysis of paraformaldehyde-fixed HeLa cells using SMAD2 (Cat. No. C15410251) antibody at a 1:200 dilution.



**Figure 4. Western Blot**

Sample: 30 µg of HeLa whole cell lysate  
10% SDS PAGE  
C15410251 diluted 1:1000