

PRODUCT NAME		
SETD8 polyclonal antibody		
Other names: SET07, SET8, PR/SET07, KMT5A, PR-Set7		
<b>Cat. No.</b> C15410043 (pAb-043-050)	<b>Type:</b> Polyclonal	<b>Size:</b> 50 µg/ 25 µl
<b>Lot #:</b> 001	<b>Source:</b> Rabbit	<b>Concentration:</b> 2.0 µg/µl

**Description:** Polyclonal antibody raised in rabbit against human SETD8 (SET domain containing 8), using the full length protein containing a Flag-tagged N-terminus and a His-tagged C terminus.

**Specificity:** Human and mouse: positive  
Other species: not tested

Applications	Suggested dilution	References
Western blotting	1:1,000	Fig 1

**Purity:** Protein G purified polyclonal antibody in PBS containing 0.05% azide and 0.05% ProClin 300.

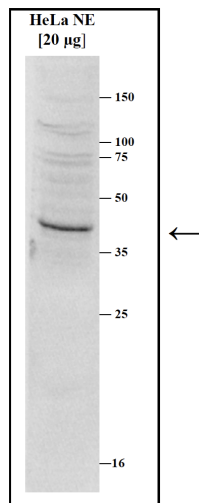
**Storage:** Store at -20°C; for long storage, store at -80°C. Avoid multiple freeze-thaw cycles.

**Precautions:** This product is for research use only. Not for use in diagnostic or therapeutic procedures.

**Last data sheet update:** April 23, 2010

**Target description**

SETD8 (UniProtKB/Swiss-Prot entry Q9NQR1) is a histone methyl transferase that specifically monomethylates 'Lys-20' of histone H4. This histone modification represents a specific tag for epigenetic transcriptional repression and is enriched during mitosis. SETD8 may also play a role in maintaining silent chromatin by preventing the acetylation of the H4 tail.



**Figure 1**

**Western blot analysis using the Diagenode antibody directed against SETD8**

Western blot was performed on nuclear extracts from HeLa cells (HeLa NE, 20 µg) using the Diagenode antibody against SETD8 (Cat. No. pAb-043-050) diluted 1:1000 in TBS-Tween containing 5% skimmed milk. The molecular weight marker (in kDa) is shown on the right; the location of the protein of interest is indicated by an arrow.