

| PRODUCT NAME | | |
|--|-------------------------|--------------------------------------|
| SETD8 polyclonal antibody | | |
| Other names: SET07, SET8, PR/SET07, KMT5A, PR-Set7 | | |
| Cat. No. C15310043 (CS-043-100) | Type: Polyclonal | Size: 100 µl |
| Lot #: 001 | Source: Rabbit | Concentration: not determined |

Description: Polyclonal antibody raised in rabbit against human SETD8 (SET domain containing 8), using the full length protein containing a Flag-tagged N-terminus and a His-tagged C terminus.

Specificity: Human and mouse: positive
Other species: not tested

| Applications | Suggested dilution | References |
|------------------|--------------------|------------|
| Western blotting | 1:1,000 | Fig 1 |

Purity: Whole antiserum from rabbit containing 0.05% azide.

Storage: Store at -20°C; for long storage, store at -80°C. Avoid multiple freeze-thaw cycles.

Precautions: This product is for research use only. Not for use in diagnostic or therapeutic procedures.

Last data sheet update: April 23, 2010

Target description

SETD8 (UniProtKB/Swiss-Prot entry Q9NQR1) is a histone methyl transferase that specifically monomethylates 'Lys-20' of histone H4. This histone modification represents a specific tag for epigenetic transcriptional repression and is enriched during mitosis. SETD8 may also play a role in maintaining silent chromatin by preventing the acetylation of the H4 tail.

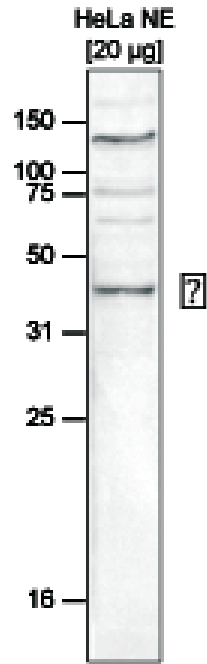


Figure 1

Western blot analysis using the Diagenode antibody directed against SETD8

Western blot was performed on nuclear extracts from HeLa cells (HeLa NE, 20 µg) using the Diagenode antibody against SETD8 (cat# CS-043-100) diluted 1:1000 in TBS-Tween containing 5% skimmed milk. The molecular weight marker (in kDa) is shown on the left; the location of the protein of interest is indicated on the right.