

PRODUCT NAME		
SAP30 polyclonal antibody		
Cat. No. <b>C15310036</b> (CS-036-100)	Type: Polyclonal	Size: 100 µl
Lot #: 001	Source: Rabbit	Concentration: not determined

**Description:** Polyclonal antibody raised in rabbit against human SAP30 (Sin3-associated polypeptide, 30kDa), using the full length His-tagged protein.

**Specificity:** Human: positive  
Other species: not tested

Applications	Suggested dilution	References
Western blotting	1:1,000	Fig 1

**Purity:** Whole antiserum from rabbit containing 0.05% azide.

**Storage:** Store at -20°C; for long storage, store at -80°C. Avoid multiple freeze-thaw cycles.

**Precautions:** This product is for research use only. Not for use in diagnostic or therapeutic procedures.

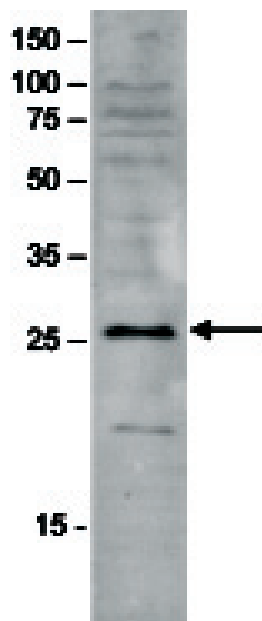
**This antibody has been described in:**

(1) Zhang Y, Sun ZW, Iratni R, Erdjument-Bromage H, Tempst P, Hampsey M and Reinberg D (1998) SAP30, a novel protein conserved between human and yeast, is a component of a histone deacetylase complex. Mol. Cell. 1: 1021-1031.

**Last data sheet update:** April 23, 2010

**Target description**

SAP30 (UniProtKB/Swiss-Prot entry O75446) is a component of the histone deacetylase complex, which also includes SIN3, SAP18, HDAC1, HDAC2, RbAp46, RbAp48. Histone acetylation and deacetylation play a key role in the regulation of eukaryotic gene expression. This complex only deacetylates core histone octamers, and is not able to deacetylate nucleosomal histones.



**Figure 1**

**Western blot analysis using the Diagenode antibody directed against SAP30**

Western blot was performed on nuclear extracts from HeLa cells (HeLa NE, 20  $\mu$ g) using the Diagenode antibody against SAP30 (cat# CS-036-100) diluted 1:1000 in TBS-Tween containing 5% skimmed milk. The molecular weight marker (in kDa) is shown on the left; the location of the protein of interest is indicated on the right.