

## RbAp48 monoclonal antibody - Classic

**Cat. No.** C15200206

**Type:** Monoclonal

**Source:** Mouse

**Lot #:** 40186

**Size:** 100 µl

**Concentration:** 1 µg/µl

**Specificity:** Human.

**Purity:** Protein G Affinity Purified

**Storage:** Store at -20°C; for long storage, store at -80°C. Avoid multiple freeze-thaw cycles.

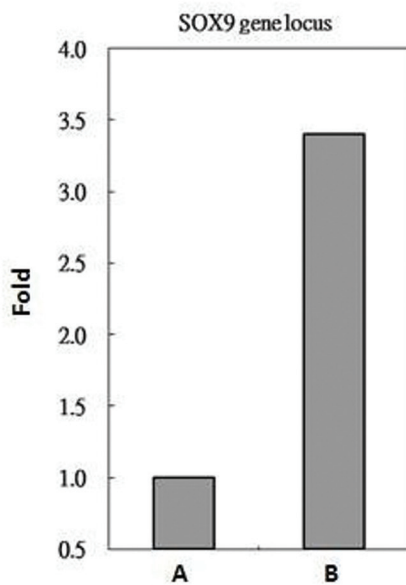
**Precautions:** This product is for research use only. Not for use in diagnostic or therapeutic procedures.

### Applications

	Suggested dilution*	Results
ChIP assay	5 µg/ChIP	Figure 1
ICC/IF	1:100 - 1:500	Figure 3
Immunoprecipitation	1:100 - 1:500	Figure 2
Western blot	1:100 - 1:500	Figure 4

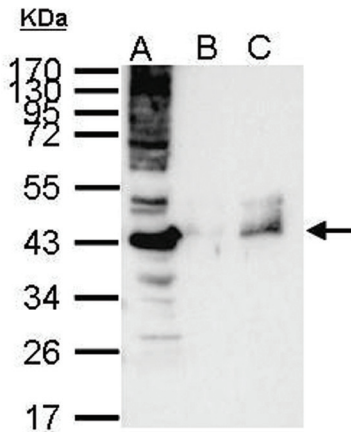
\*Optimal dilutions/concentrations should be determined by the researcher.

### Results



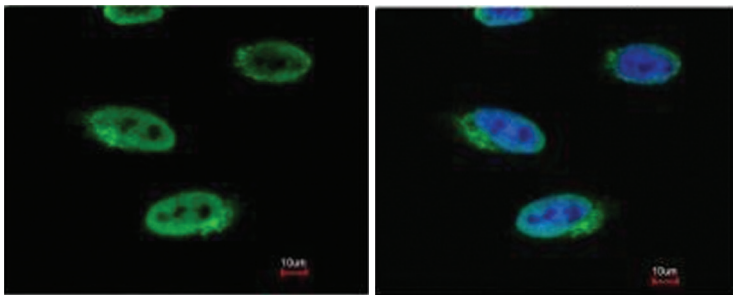
**Figure 1. ChIP**

RbAp48 antibody immunoprecipitates RbAp48 protein-DNA in ChIP experiments. ChIP Sample: HeLa chromatin extract A. 5 µg preimmune mouse IgG B. 5 µg of RbAp48 antibody (C15200206) The precipitated DNA was detected by PCR with primer set targeting to SOX9 gene locus.



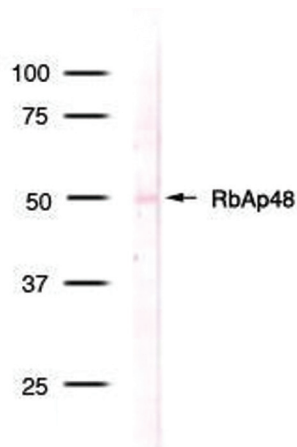
**Figure 2. Immunoprecipitation**

RbAp48 antibody immunoprecipitates RbAp48 protein in IP experiments. IP Sample: 1,000 µg HeLa whole cell extract A. 40 µg HeLa whole cell extract B. Control with 2.5 µg of preimmune mouse IgG C. Immunoprecipitation of RbAp48 protein with 2.5 µg of RbAp48 antibody (C15200206) The immunoprecipitated RbAp48 protein was detected by western blot with the RbAp48 antibody diluted 1:500.



**Figure 3. Immunofluorescent analysis**

Immunofluorescence analysis of HeLa cells, using RbAp48 (Cat. No. C15200206) antibody at a 1:100 dilution.



**Figure 4. Western blot**

Detection of RbAp48 in HeLa nuclear extract.