

RFX5 polyclonal antibody

Cat. No. C15410326

Type: Polyclonal

Source: Rabbit

Lot #: 001

Size: 100 µg/100 µl

Concentration: 1 µg/µl

Specificity: Human: positive. Other species: not tested.

Purity: Purified antibody in PBS containing 0.01% sodium azide.

Storage: Store at -20°C; for long storage, store at -80°C. Avoid multiple freeze-thaw cycles

Precautions: This product is for research use only. Not for use in diagnostic or therapeutic procedures

Description: Polyclonal antibody raised in rabbit against RFX5 (Regulatory Factor X 5), using a KLH conjugated synthetic peptide from the central part of the protein.

Applications

	Suggested dilution	Results
Western blotting	1:2,500	Fig 1

Target description

RFX5 (UniProt/Swiss-Prot entry P48382) binds to the X box of MHC-II promoters thereby activating transcription, and mediates the cooperative binding between RFX and NFY. Deficiency of RFX5 leads to a lack of MHC-II expression which is characterized by a severe immunodeficiency syndrome called MHC-II deficiency.

Results

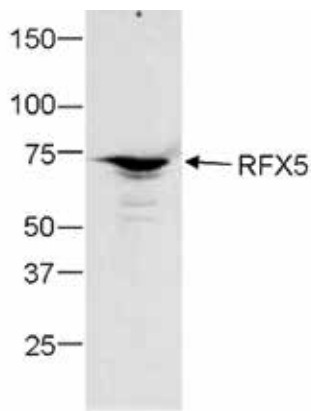


Figure 1. Western blot analysis using the Diagenode antibody directed against RFX5

Nuclear extracts from Raji B cells (35 µg) were analysed by Western blot using the Diagenode antibody against RFX (cat. No. C15410326) diluted 2,500. The position of the protein of interest (expected MW 80 kDa) is indicated on the right; the marker (in kDa) is shown on the left.

Diagenode sa. BELGIUM | EUROPE

LIEGE SCIENCE PARK
Rue Bois Saint-Jean, 3
4102 Seraing (Ougrée) - Belgium
Tel: +32 4 364 20 50
Fax: +32 4 364 20 51
orders@diagenode.com
info@diagenode.com

Diagenode Inc. USA | NORTH AMERICA

400 Morris Avenue, Suite 101
Denville, NJ 07834 - USA
Tel: +1 862 209-4680
Fax: +1 862 209-4681
orders.na@diagenode.com
info.na@diagenode.com

Last update: May 27, 2016