

PAX8 polyclonal antibody - Classic

Cat. No. C15410246

Type: Polyclonal

Source: Rabbit

Lot #: 39967

Size: 25 µl/100 µl

Concentration: 1 µg/µl

Specificity: Human.

Purity: Purified by antigen-affinity chromatography.

Storage: Store at -20°C; for long storage, store at -80°C. Avoid multiple freeze-thaw cycles.

Precautions: This product is for research use only. Not for use in diagnostic or therapeutic procedures.

Applications

	Suggested dilution*	Results
ChIP assay	5 µg/ChIP	Figure 1
ICC/IF	1:100-1:1,000	Figure 3
IHC	1:100-1:1,000	Figure 4
Immunoprecipitation	1:500-1:1,000	Figure 2
Western blot	1:500-1:3,000	Figure 5

*Optimal dilutions/concentrations should be determined by the researcher.

Results

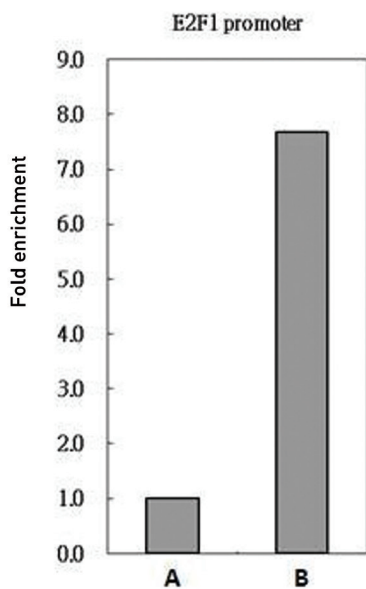


Figure 1. ChIP

PAX8 antibody immunoprecipitates PAX8 protein-DNA in ChIP experiments. ChIP Sample: 293T chromatin extract A. 5 µg preimmune rabbit IgG B. 5 µg of PAX8 antibody (C15410246) The precipitated DNA was detected by PCR with primer set targeting to E2F1 promoter.

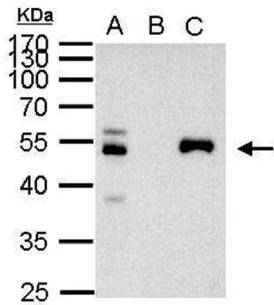


Figure 2. Immunoprecipitation

PAX8 antibody immunoprecipitates PAX8 protein in IP experiments. IP Sample: 1000 µg 293T whole cell extract A. 40 µg 293T whole cell extract B. Control with 2 µg of preimmune rabbit IgG C. Immunoprecipitation of PAX8 protein by 2 µg of PAX8 antibody [Cat. No. C15410246]. The immunoprecipitated PAX8 protein was detected by western blot with the PAX8 antibody diluted 1:1,000.

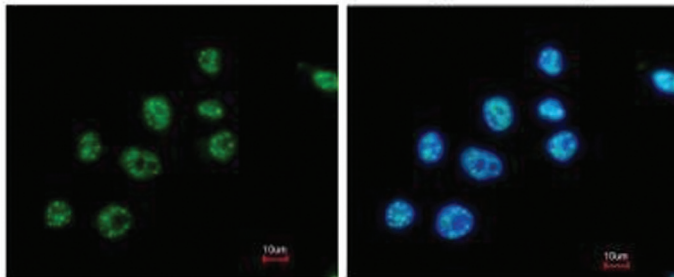


Figure 3. IF results

Immunofluorescence analysis of paraformaldehyde-fixed A549, using PAX8 antibody [Cat. No. C15410246] at a 1:200 dilution.

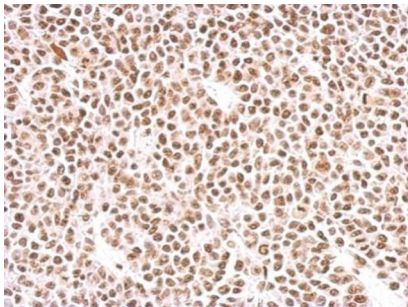


Figure 4. Immunohistochemical analysis

PAX8 antibody detects PAX8 protein in the nucleus of BT483 xenograft by immunohistochemical analysis.

Sample: Paraffin-embedded BT483 xenograft.

PAX8 antibody [Cat. No. C15410246] dilution: 1:500.

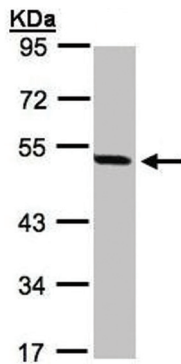


Figure 5. Western Blot

Sample: 30 µg 293T whole cell lysate

10% SDS PAGE

PAX8 antibody diluted 1:1,000