

PARP1 polyclonal antibody - Classic

Cat. No. C15410245

Type: Polyclonal

Source: Rabbit

Lot #: 41031

Size: 25 µl/100 µl

Concentration: 1 µg/µl

Specificity: Human.

Purity: Purified by antigen-affinity chromatography.

Storage: Store at -20°C; for long storage, store at -80°C. Avoid multiple freeze-thaw cycles.

Precautions: This product is for research use only. Not for use in diagnostic or therapeutic procedures.

Applications

	Suggested dilution	Results
ChIP assay	5 µg/ChIP	Figure 1
ICC/IF	1:100-1:1,000	Figure 3
IHC	1:100-1:1,000	Figure 4
Immunoprecipitation	1:100-1:500	Figure 6
Western blot	1:5,000-1:20,000	Figure 2, 5

*Optimal dilutions/concentrations should be determined by the researcher.

Results

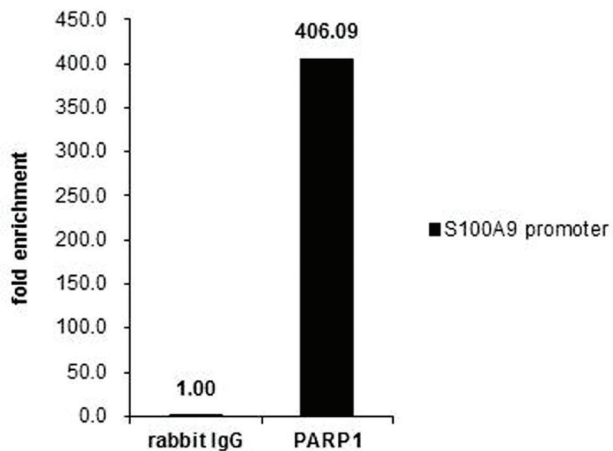


Figure 1. ChIP

ChIP was performed with Raji chromatin extract and 5 µg of either control rabbit IgG or PARP1 antibody. The precipitated DNA was detected by PCR with primer set targeting to S100A9 promoter.

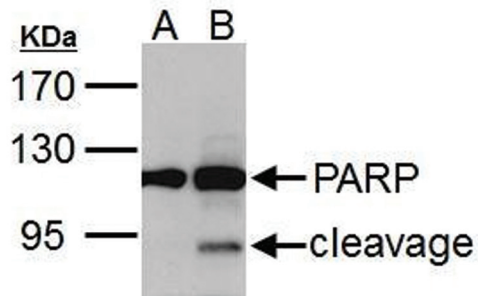


Figure 2. Western Blot

PARP1 antibody detects PARP1 protein by Western blot analysis.

A. 30 μ g HCT116 whole cell extract (untreated)

B. 30 μ g HCT116 whole cell extract (30 μ M cisplatin treatment for 24hr)

7.5 % SDS-PAGE

PARP1 antibody (Cat. No. C15410245) dilution: 1:5,000

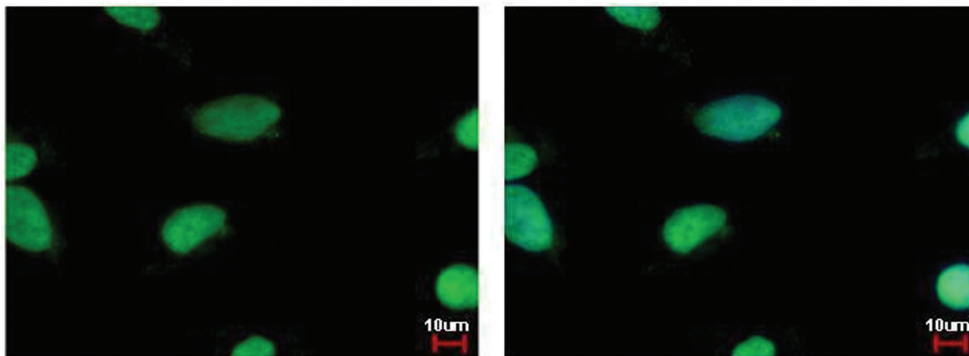


Figure 3. Immunofluorescent analysis

PARP1 antibody detects PARP1 protein in the nucleus by immunofluorescent analysis.

Sample: HeLa cells were fixed in 4% paraformaldehyde at RT for 15 min.

Green: PARP1 protein stained by PARP1 antibody (Cat. No. C15410245) diluted 1:500.

Blue: Hoechst 33342 staining.

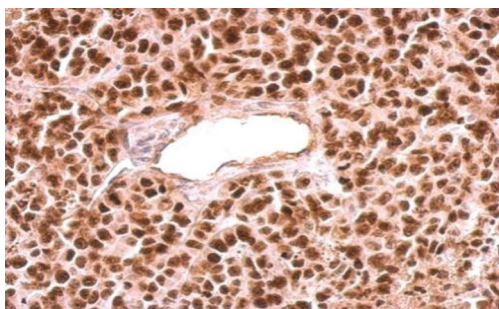


Figure 4. Immunohistochemical analysis

PARP1 antibody detects PARP1 protein in the nucleus of HeLa xenograft by immunohistochemical analysis.

Sample: Paraffin-embedded HeLa xenograft.

PARP1 antibody (Cat. No. C15410245) dilution: 1:500.

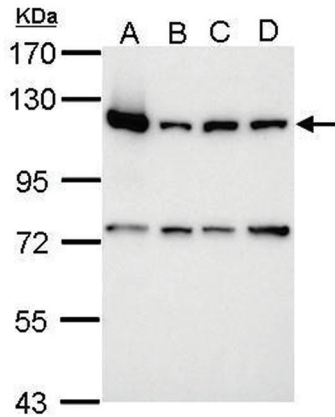


Figure 5. Western Blot

Sample: 30 µg of whole cell lysate

A: 293T

B: A431

C: HeLa

D: HepG2

7.5% SDS PAGE

C15410245 dilution 1:10,000

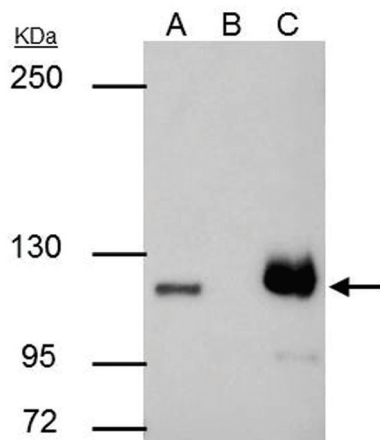


Figure 6. Immunoprecipitation

PARP1 antibody immunoprecipitates PARP1 protein in IP experiments.

IP samples: HCT-116 whole cell extract

A. 30 µg HCT-116 whole cell extract

B. Control with 4 µg of preimmune Rabbit IgG

C. Immunoprecipitation of PARP1 protein with 4 µg PARP1 antibody (Cat. No. C15410245)

5 % SDS-PAGE

The immunoprecipitated PARP1 protein was detected by PARP1 antibody (C15410245) diluted 1:500.