

PARP1 polyclonal antibody - Classic

Cat. No. C15410245-100

Type: Polyclonal	Specificity: Human
Size: 100 µl	Isotype: NA
Concentration: 0.17 µg/µl	Host: Rabbit
Lot No.: 42914	Purity: Affinity purified
Storage buffer: NA	Storage conditions: NA
Precautions: This product is for research use only. Not for use in diagnostic or therapeutic procedures.	

Description

Polyclonal antibody raised in rabbit against PARP1 (poly (ADP-ribose) polymerase 1), using a recombinant protein.

Applications

Applications	Suggested dilution *	References
ChIP assay	5 µg/ChIP	Fig 1
ICC/IF	1:100 - 1:1,000	Fig 3
IHC	1:100 - 1:1,000	Fig 4
Immunoprecipitation	1:100-1:500	Fig 6
Western Blotting	1:5,000 - 1:20,000	Fig 2, 5

* Optimal dilutions/concentrations should be determined by the researcher.

Target Description

Polyclonal antibody raised in rabbit against PARP1 (poly (ADP-ribose) polymerase 1), using a KLH-conjugated synthetic peptide.

Validation Data

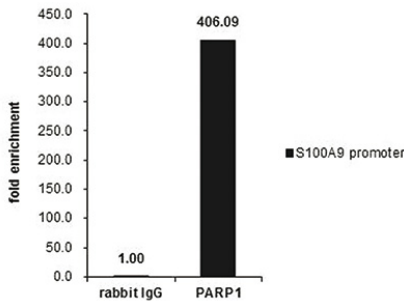


Figure 1. ChIP

ChIP was performed with Raji chromatin extract and 5 µg of either control rabbit IgG or PARP1 antibody. The precipitated DNA was detected by PCR with primer set targeting to S100A9 promoter.

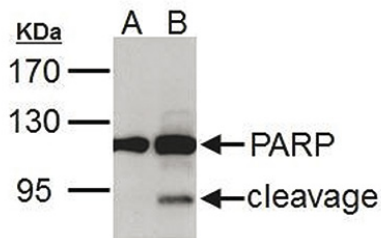


Figure 2. Western Blot

PARP1 antibody detects PARP1 protein by Western blot analysis. A. 30 µg HCT116 whole cell extract (untreated) B. 30 µg HCT116 whole cell extract (30 µM cisplatin treatment for 24hr) 7.5 % SDS-PAGE PARP1 antibody (Cat. No. C15410245) dilution: 1:5,000

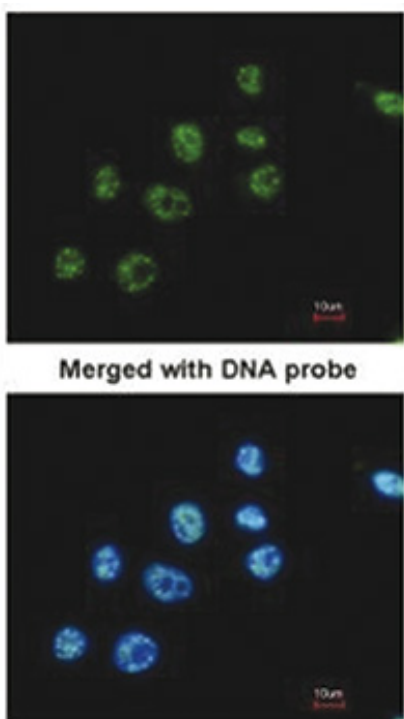


Figure 3. Immunofluorescent analysis

PARP1 antibody detects PARP1 protein in the nucleus by immunofluorescent analysis. Sample: HeLa cells were fixed in 4% paraformaldehyde at RT for 15 min. Green: PARP1 protein stained by PARP1 antibody (Cat. No. C15410245) diluted 1:500. Blue: Hoechst 33342 staining.

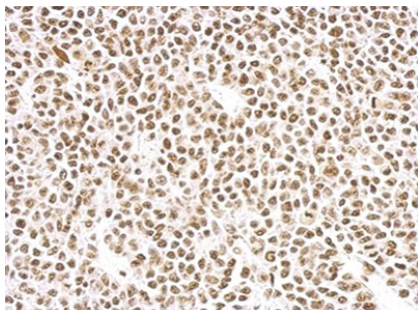


Figure 4. Immunohistochemical analysis

PARP1 antibody detects PARP1 protein in the nucleus of HeLa xenograft by immunohistochemical analysis. Sample: Paraffin-embedded HeLa xenograft. PARP1 antibody (Cat. No. C15410245) dilution: 1:500.

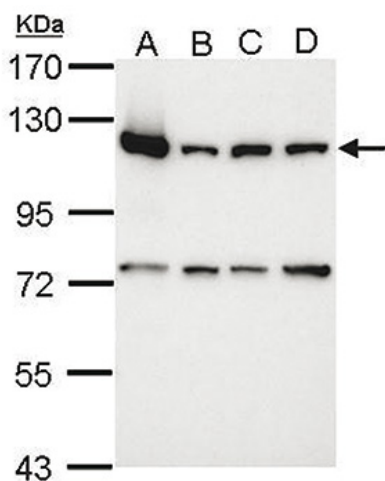


Figure 5. Western Blot

Sample: 30 μ g of whole cell lysate A: 293T B: A431 C: HeLa D: HepG2
7.5% SDS PAGE C15410245 dilution 1:10,000

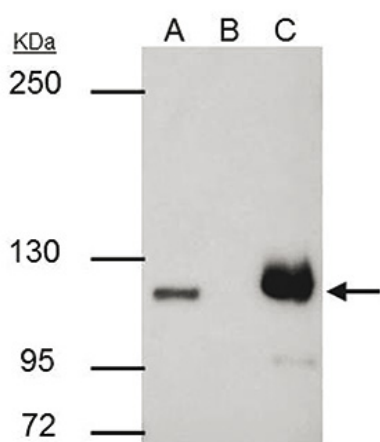


Figure 6. Immunoprecipitation

PARP1 antibody immunoprecipitates PARP1 protein in IP experiments. IP samples: HCT-116 whole cell extract A. 30 μ g HCT-116 whole cell extract B. Control with 4 μ g of preimmune Rabbit IgG C. Immunoprecipitation of PARP1 protein with 4 μ g PARP1 antibody (Cat. No. C15410245) 5 % SDS-PAGE The immunoprecipitated PARP1 protein was detected by PARP1 antibody (C15410245) diluted 1:500.