

PRODUCT NAME		
PAPOLA polyclonal antibody		
Other names: PAP, PAP-alpha		
Cat. No. C15310137 (CS-137-100)	Type: Polyclonal ChIP-grade	Size: 100 µl
Lot #: A427-001	Source: Rabbit	Concentration: not determined

Description: Polyclonal antibody raised in rabbit against human PAPOLA (polyA polymerase alpha), using a KLH-conjugated synthetic peptide containing a sequence from the C-terminal part of the protein.

Specificity: Human: positive
Other species: not tested

Applications	Suggested dilution	References
ELISA	1:100 – 1:500	Fig 1
Western blotting	1:1,000	Fig 2

Purity: Whole antiserum from rabbit containing 0.05% azide.

Storage: Store at -20°C; for long storage, store at -80°C. Avoid multiple freeze-thaw cycles.

Precautions: This product is for research use only. Not for use in diagnostic or therapeutic procedures.

Last data sheet update: March 18, 2010

Target description

PAPOLA (UniProtKB/Swiss-Prot entry P51003) is an RNA polymerase that generates the poly(A) tail of RNA's by adding AMP monomers to the 3'-end. PAPOLA may also be required for the endoribonucleolytic cleavage reaction at some polyadenylation sites.

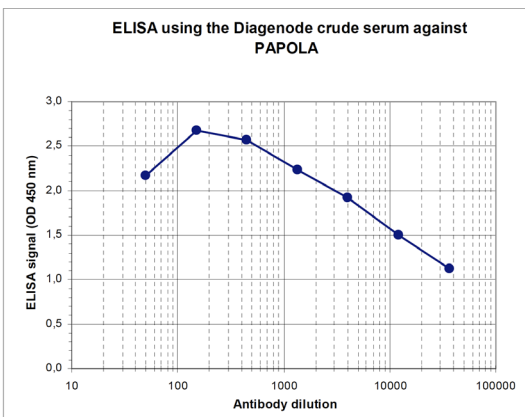


Figure 1
Determination of the titer

To determine the titer, an ELISA was performed using a serial dilution of the Diagenode antibody directed against human PAPOLA (Cat. No. CS-137-100). The plates were coated with the peptide used for immunization of the rabbit. By plotting the absorbance against the antibody dilution (Figure 1), the titer of the antibody was estimated to be 1:22,500.

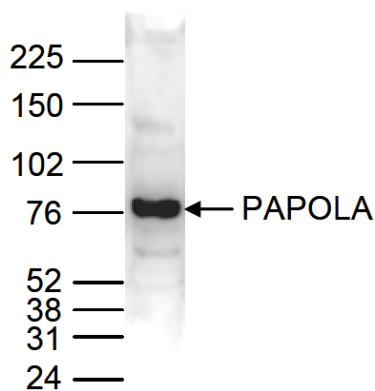


Figure 2
Western blot analysis using the Diagenode antibody directed against PAPOLA

Nuclear extracts from HeLa cells (40 µg) were analysed by Western blot using the Diagenode antibody against PAPOLA (Cat. No. CS-137-100) diluted 1:1,000 in TBS-Tween containing 5% skimmed milk. The position of the protein of interest is indicated on the right (expected size: 83 kDa); the marker (in kDa) is shown on the left.