

PRODUCT NAME		
PAPD1 polyclonal antibody		
Other names: PAP, mtPAP		
Cat. No. C15310132 (CS-132-100)	Type: Polyclonal	Size: 100 µl
Lot #: A415-004	Source: Rabbit	Concentration: not determined

Description: Polyclonal antibody raised in rabbit against human PAPD1 (PAP associated domain containing 1), using a KLH-conjugated synthetic peptide containing a sequence from the C-terminal part of the protein.

Specificity: Human: positive
Other species: not tested

Applications	Suggested dilution	References
ELISA	1:500	Fig 1
Western blotting	1:1,000	Fig 2

Purity: Whole antiserum from rabbit containing 0.05% azide.

Storage: Store at -20°C; for long storage, store at -80°C. Avoid multiple freeze-thaw cycles.

Precautions: This product is for research use only. Not for use in diagnostic or therapeutic procedures.

Last data sheet update: March 18, 2010

Target description

PAPD1 (UniProtKB/Swiss-Prot entry Q9NWW4) is a mitochondrial RNA polymerase that generates the poly(A) tail of mitochondrial RNA's by adding AMP monomers to the 3'-end. PAPD1 might also be responsible for the introduction of UAA stop codons, which are not encoded by the mitochondrial DNA, in some RNA molecules.

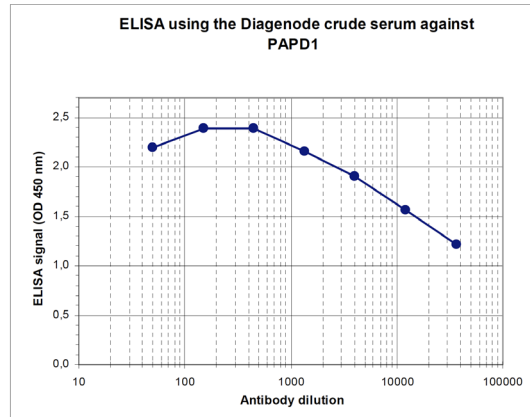


Figure 1
Determination of the titer

To determine the titer, an ELISA was performed using a serial dilution of the Diagenode antibody directed against human PAPP1 (Cat. No. CS-132-100). The plates were coated with the peptide used for immunization of the rabbit. By plotting the absorbance against the antibody dilution (Figure 1), the titer of the antibody was estimated to be 1:47,000.

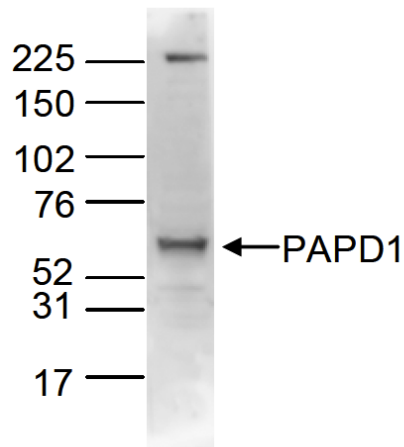


Figure 2
Western blot analysis using the Diagenode antibody directed against PAPP1

Whole cell extracts of U2OS cells (80 µg) were analysed by Western blot using the Diagenode antibody against PAPP1 (Cat. No. CS-132-100) diluted 1:1,000 in TBS-Tween containing 5% skimmed milk. The position of the protein of interest is indicated on the right (expected size: 66 kDa); the marker (in kDa) is shown on the left.