

PAD4 polyclonal antibody - Classic

Cat. No. C15410244

Type: Polyclonal

Source: Rabbit

Lot #: 40150

Size: 25 µl/100 µl

Concentration: 0.73 µg/µl

Specificity: Human.

Purity: Purified by antigen-affinity chromatography.

Storage: Store at -20°C; for long storage, store at -80°C. Avoid multiple freeze-thaw cycles.

Precautions: This product is for research use only. Not for use in diagnostic or therapeutic procedures.

Applications

	Suggested dilution*	Results
ChIP assay	5 µg/ChIP	Figure 1
ICC/IF	1:100-1:1,000	Figure 2
IHC	1:100-1:1,000	Figure 3
WB	1:100-1:1,000	Figure 4

*Optimal dilutions/concentrations should be determined by the researcher.

Results

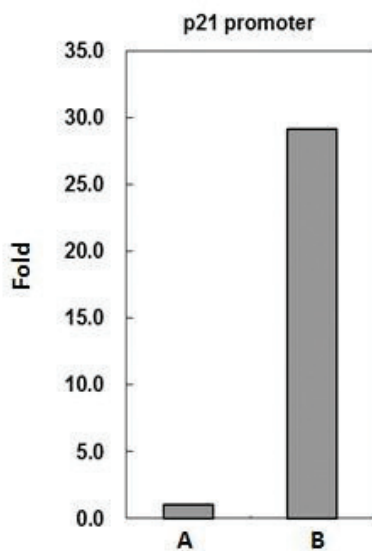


Figure 1. PAD4 antibody ChIP results

PAD4 antibody immunoprecipitates PAD4 protein-DNA complex in ChIP experiments. ChIP Sample: 293T chromatin extract A. 5 µg preimmune rabbit IgG.

B. 5 µg of PAD4 antibody.

The precipitated DNA was detected by PCR with primer set targeting to p21 promoter.

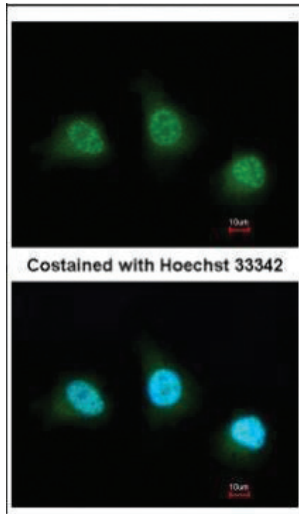


Figure 2. PAD4 Immunofluorescence

Immunofluorescence analysis of paraformaldehyde-fixed HeLa cells using PAD4 antibody at a 1:200 dilution.

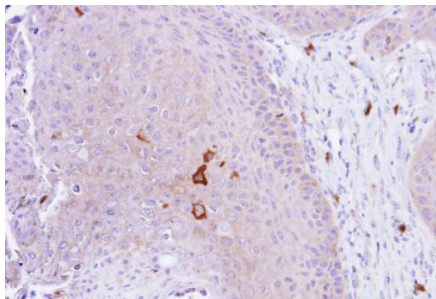


Figure 3. Immunohistochemistry

Immunohistochemical analysis of paraffin-embedded Cal27 xenograft, using PAD4 antibody at a 1:100 dilution.

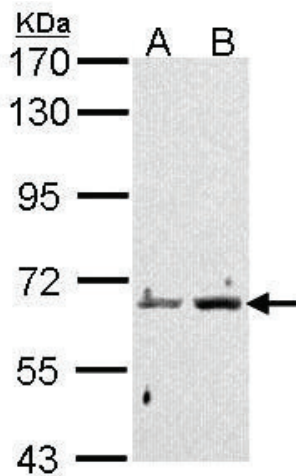


Figure 4. Western blot

Sample: 30 µg of whole cell lysate
A: HeLa
B: Hep G2
7.5% SDS PAGE
PAD4 antibody diluted 1:1,000

Diagenode sa. BELGIUM | EUROPE

LIEGE SCIENCE PARK
Rue Bois Saint-Jean, 3
4102 Seraing (Ougrée) - Belgium
Tel: +32 4 364 20 50
Fax: +32 4 364 20 51
orders@diagenode.com
info@diagenode.com

Diagenode Inc. USA | NORTH AMERICA

400 Morris Avenue, Suite 101
Denville, NJ 07834 - USA
Tel: +1 862 209-4680
Fax: +1 862 209-4681
orders.na@diagenode.com
info.na@diagenode.com

Last update: September 11, 2014