

PRODUCT NAME		
MTA2 polyclonal antibody		
Other names: MTA1L1, MTA1-L1, PID		
<b>Cat. No.</b> C15410032 (pAb-032-050)	<b>Type:</b> Polyclonal	<b>Size:</b> 50 µg/ 25 µl
<b>Lot #:</b> 001	<b>Source:</b> Rabbit	<b>Concentration:</b> 2.0 µg/µl

**Description:** Polyclonal antibody raised in rabbit against human MTA2 (Human Metastasis associated 1 family, member 2), using a recombinant protein.

**Specificity:** Human: positive  
Other species: not tested

Applications	Suggested dilution	References
Western blotting	1:1,000	Fig1

**Purity:** Protein G purified polyclonal antibody in PBS containing 0.05% azide and 0.05% ProClin 300.

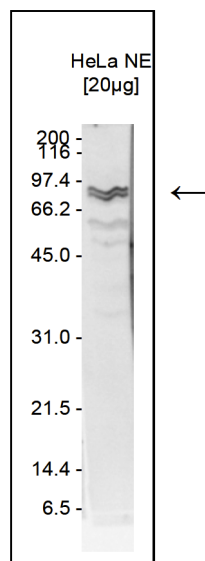
**Storage:** Store at -20°C; for long storage, store at -80°C. Avoid multiple freeze-thaw cycles.

**Precautions:** This product is for research use only. Not for use in diagnostic or therapeutic procedures.

**Last data sheet update:** April 22, 2010

**Target description**

MTA2 (UniProtKB/Swiss-Prot entry O94776) is a component of the nucleosome-remodeling and histone-deacetylase multiprotein complex (NuRD). MTA2 may be involved in the regulation of gene expression as repressor and activator. The repression is probably related to covalent modification of histones. MTA2 interacts with HDAC7 and p53.



**Figure 1**

**Western blot analysis using the Diagenode antibody directed against MTA2**

Western blot was performed on nuclear extracts from HeLa cells (HeLa NE, 20 µg) using the Diagenode antibody against MTA2 [Cat. No. pAb-032-050] diluted 1:1,000 in TBS-Tween containing 5% skimmed milk. A molecular weight marker (in kDa) is shown on the left; the location of the protein of interest is indicated on the right.