

## MeCP2 monoclonal antibody

**Other name:** AUTSX3, MRX16, MRX79, MRXS13, MRXSL, PPMX, RTS, RTT

**Cat. No.** C15200225

**Type:** Monoclonal

**Source:** Mouse

**Lot #:** 001

**Size:** 50 µg/50 µl

**Concentration:** 1 µg/µl

**Specificity:** Human, mouse: positive  
Other species: not tested

**Purity:** Affinity purified monoclonal antibody in PBS. Does not contain any preservative.

**Storage:** Store at -20°C; for long storage, store at -80°C.  
Avoid multiple freeze-thaw cycles

**Precautions:** This product is for research use only.  
Not for use in diagnostic or therapeutic procedures

**Description:** Monoclonal antibody raised in mouse against MeCP2 (Methyl-CpG-binding domain protein 2), using a recombinant protein.

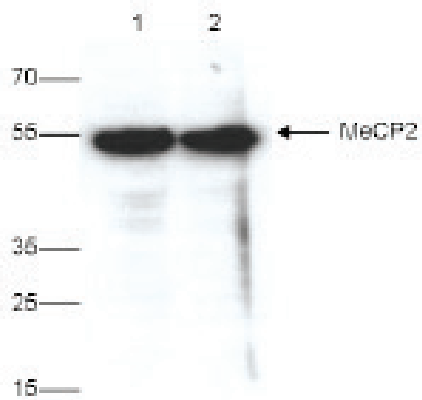
### Applications

	Suggested dilution	Results
Western blotting	1:1,000	Fig 1
Immunofluorescence	1:400	Fig 2

### Target description

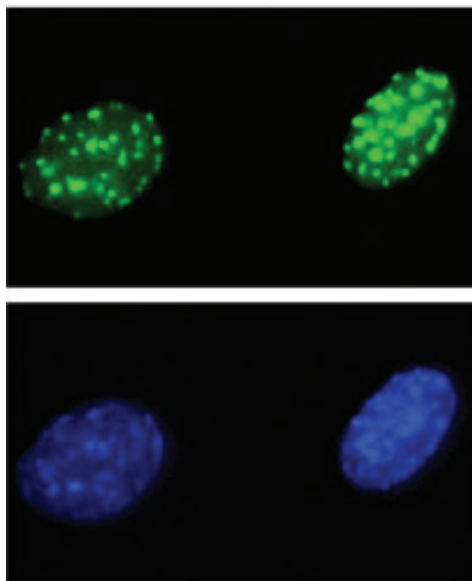
MeCP2 (UniProt/Swiss-Prot entry P51608) is a chromosomal protein with abundant binding sites in the chromatin. It belongs to the family of methyl CpG binding proteins which also comprises MBD1, MBD2, MBD3 and MBD4. MeCP2 can bind specifically to methylated promoters, thereby repressing transcription. This transcriptional repression is mediated through interaction with histone deacetylase and the corepressor SIN3A. MeCP2 also is essential for development. Mutations in MeCP2 are the cause of several types of mental retardation including Rett syndrome, a progressive neurological disorder that causes mental retardation in females and mental retardation syndromic X-linked type 13, and may also be involved in Angelman syndrome and susceptibility to some types of autism.

## Results



**Figure 1. Western blot analysis using the Diagenode monoclonal antibody directed against MeCP2**

Whole cell extracts from HeLa (lane 1) or MEF (lane 2) cells were analysed by Western blot using the Diagenode antibody against MeCP2 (Cat. No. C15200225) diluted 1:1,000. The position of the protein of interest is indicated on the right; the marker (in kDa) is shown on the left.



**Figure 2. Immunofluorescence using the Diagenode monoclonal antibody directed against MeCP2**

HeLa cells were stained with the Diagenode antibody against MeCP2 (Cat. No. C15200225) diluted 1:400 followed by an anti-mouse antibody conjugated to Alexa488 (upper figure). The bottom figure shows staining of the nuclei with DAPI.

### Diagenode sa. BELGIUM | EUROPE

LIEGE SCIENCE PARK  
Rue Bois Saint-Jean, 3  
4102 Seraing (Ougrée) - Belgium  
Tel: +32 4 364 20 50  
Fax: +32 4 364 20 51  
orders@diagenode.com  
info@diagenode.com

### Diagenode Inc. USA | NORTH AMERICA

400 Morris Avenue, Suite 101  
Denville, NJ 07834 - USA  
Tel: +1 862 209-4680  
Fax: +1 862 209-4681  
orders.na@diagenode.com  
info.na@diagenode.com

Last update: August 21, 2015