

MCM6 polyclonal antibody - Classic

Cat. No. C15410239

Type: Polyclonal

Source: Rabbit

Lot #: 41521

Size: 25 µl/100 µl

Concentration: 1 µg/µl

Specificity: Human

Purity: Purified by peptide affinity chromatography.

Storage: Store at -20°C; for long storage, store at -80°C. Avoid multiple freeze-thaw cycles.

Precautions: This product is for research use only. Not for use in diagnostic or therapeutic procedures.

Applications

	Suggested dilution*	Results
ChIP assay	5 µg/ChIP	Figure 1
ICC/IF	1:100-1:1,000	Figure 5
Immunohistochemistry	1:100-1:1,000	Figure 3, 4
Immunoprecipitation	1:100-1:500	Figure 6
Western blot	1:500-1:3,000	Figure 2

*Optimal dilutions/concentrations should be determined by the researcher.

Results

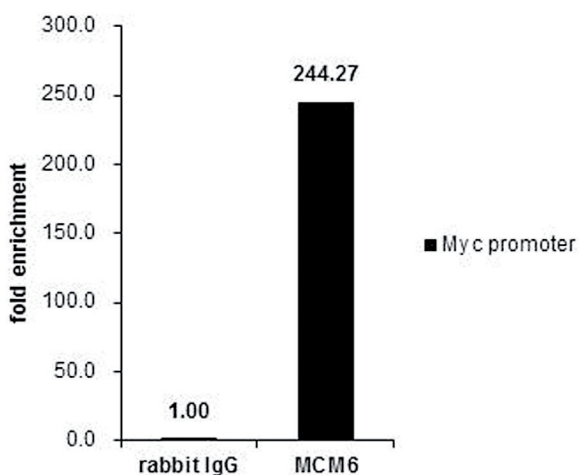


Figure 1. MCM6 ChIP results

ChIP was performed with HeLa chromatin extract and 5 µg of either control rabbit IgG or MCM6 antibody. The precipitated DNA was detected by PCR with primer set targeting to Myc promoter.

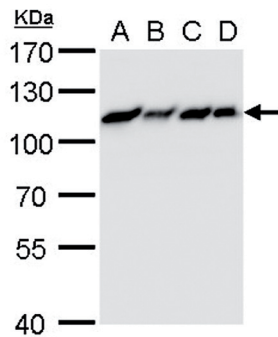


Figure 2. MCM6 Western blot results

MCM6 antibody detects MCM6 protein by western blot analysis.

A. 30 µg 293T whole cell extract

B. 30 µg A431 whole cell extract

C. 30 µg HeLa whole cell extract

D. 30 µg HepG2 whole cell extract

7.5 % SDS-PAGE

MCM6 antibody dilution: 1:1,000

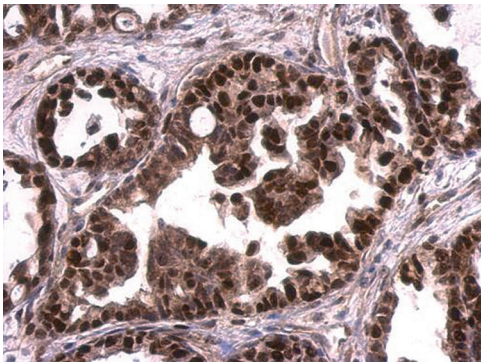


Figure 3. MCM6 IHC results

MCM6 antibody detects MCM6 protein at nucleus on human ovarian carcinoma by immunohistochemical analysis.

Sample: Paraffin-embedded human ovarian carcinoma.

MCM6 antibody dilution: 1:500.

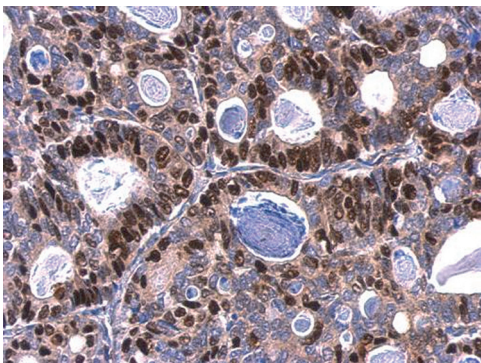


Figure 4. MCM6 IHC results

MCM6 antibody detects MCM6 protein at nucleus on human gastric carcinoma by immunohistochemical analysis.

Sample: Paraffin-embedded human gastric carcinoma.

MCM6 antibody dilution: 1:500.

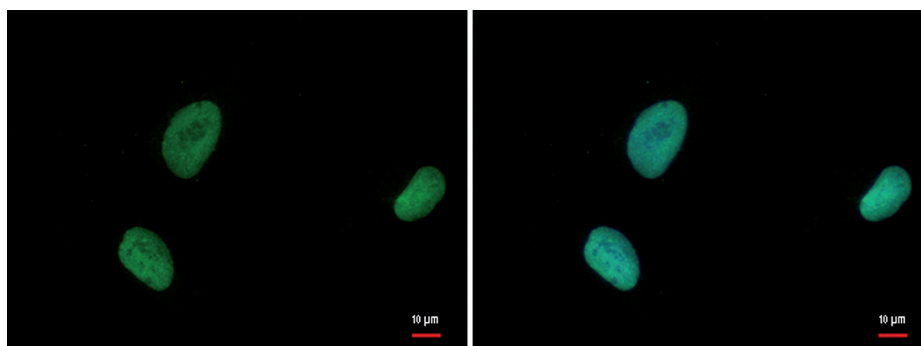


Figure 5. MCM6 IF results

MCM6 antibody detects MCM6 protein at nucleus by immunofluorescent analysis.

Sample: U2OS cells were fixed in 4% paraformaldehyde at RT for 15 min.

Green: MCM6 protein stained by MCM6 antibody diluted 1:500.

Blue: Hoechst 33342 staining.

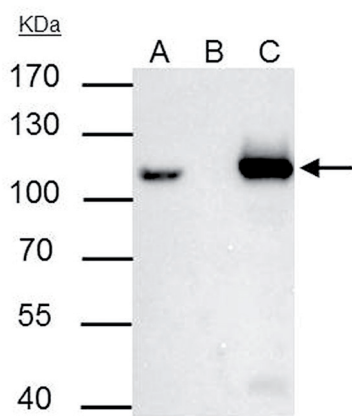


Figure 6. MCM6 IP results

MCM6 antibody immunoprecipitates MCM6 protein in IP experiments.

IP Sample: 293T whole cell extract A : 30 µg whole cell extract of MCM6 protein expressing 293T cells B : Control with 3 µg of pre-immune rabbit IgG C : Immunoprecipitation of MCM6 by 3 µg of MCM6 antibody. The immunoprecipitated MCM6 protein was detected by western blot using the MCM6 antibody diluted 1:1,000.