

LSD1 polyclonal antibody

Other names: BHC110, AOF2, EC1, KDM1

Cat. No. C15410028

Type: Polyclonal

Source: Rabbit

Lot #: 001

Size: 50 µg/ 25 µl

Concentration: 2.0 µg/µl

Specificity: Human: positive. Other species: not tested.

Purity: Protein G purified polyclonal antibody in PBS containing 0.05% azide and 0.05% ProClin 300.

Storage: Store at -20°C; for long storage, store at -80°C. Avoid multiple freeze-thaw cycles

Precautions: This product is for research use only. Not for use in diagnostic or therapeutic procedures

Description: Polyclonal antibody raised in rabbit against human LSD1 (Lysine-specific demethylase 1), using the full length recombinant protein.

Applications

	Suggested dilution	Results
Western blotting	1:1,000	Fig 1, 2

Target description

LSD1 (lysine specific demethylase 1, UniProt/Swiss-Prot entry O60341) is a component of the histone demethylase complex that uses FAD as a prosthetic group. LSD1 may have a dual effect on gene transcription. As it demethylates the mono- and dimethylated 'Lys-4' of histone H3, which are associated with transcriptional activation, LSD1 can act as a repressor of gene expression. However, LSD1 is also capable of demethylating 'Lys-9' of histone H3, a specific tag for epigenetic transcriptional repression, thereby leading to activation of androgen receptor target genes. LSD1 therefore mediates different processes such as embryonic development, cell differentiation and proliferation, stem and cancer cell biology.

Results

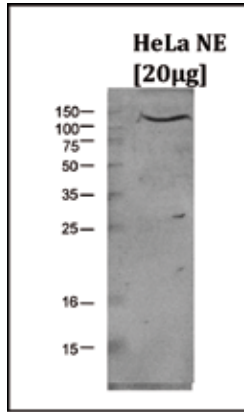


Figure 1. Western blot analysis using the Diagenode antibody directed against LSD1

Western blot was performed on nuclear extracts from HeLa cells (20 µg) using the Diagenode antibody against LSD1 (Cat. No. C15410028) diluted 1:1,000 in TBS-Tween containing 5% skimmed milk. The molecular weight marker (in kDa) is shown on the left; the location of the protein of interest is indicated on the right.

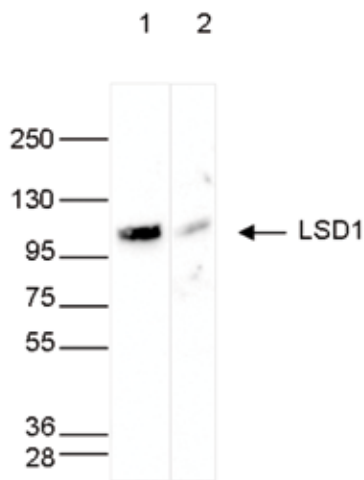


Figure 2. Western blot analysis using the Diagenode antibody directed against LSD1

Whole cell extracts (40 µg) from HeLa cells transfected with LSD1 siRNA (lane 2) and from an untransfected control (lane 1) were analysed by Western blot using the Diagenode antibody against LSD1 (Cat. No. C15410028) diluted 1:1,000 in TBS-Tween containing 5% skimmed milk. The position of the protein of interest is indicated on the right; the marker (in kDa) is shown on the left.

Diagenode sa. BELGIUM | EUROPE

LIEGE SCIENCE PARK
Rue Bois Saint-Jean, 3
4102 Seraing (Ougrée) - Belgium
Tel: +32 4 364 20 50
Fax: +32 4 364 20 51
orders@diagenode.com
info@diagenode.com

Diagenode Inc. USA | NORTH AMERICA

400 Morris Avenue, Suite 101
Denville, NJ 07834 - USA
Tel: +1 862 209-4680
Fax: +1 862 209-4681
orders.na@diagenode.com
info.na@diagenode.com

Last update: November 22, 2016