

LITAF polyclonal antibody - Classic

Cat. No. C15410265

Type: Polyclonal

Source: Rabbit

Lot #: 40023

Size: 25 µl/100 µl

Concentration: 1 µg/µl

Specificity: Human.

Purity: Purified by peptide affinity chromatography.

Storage: Store at -20°C; for long storage, store at -80°C. Avoid multiple freeze-thaw cycles.

Precautions: This product is for research use only. Not for use in diagnostic or therapeutic procedures.

Applications

	Suggested dilution*	Results
IHC	1:100-1:1,000	Figure 1
Western blot	1:500-1:3,000	Figure 2

*Optimal dilutions/concentrations should be determined by the researcher.

Results

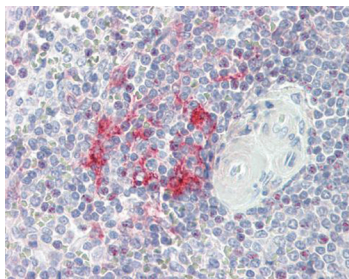


Figure 1. LITAF antibody IHC results

LITAF antibody detects LITAF protein at cytoplasm on placenta by immunohistochemical analysis.

Sample: Paraffin-embedded placenta.

LITAF antibody (C15410265) dilution: 1:100.

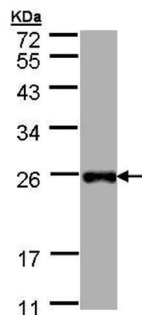


Figure 2. Western blot

Sample: 30 µg of Hep G2 whole cell lysate

12% SDS PAGE

C15410265 diluted 1:1,000

Diagenode sa. BELGIUM | EUROPE

LIEGE SCIENCE PARK
Rue Bois Saint-Jean, 3
4102 Seraing (Ougrée) - Belgium
Tel: +32 4 364 20 50
Fax: +32 4 364 20 51
orders@diagenode.com
info@diagenode.com

Diagenode Inc. USA | NORTH AMERICA

400 Morris Avenue, Suite 101
Denville, NJ 07834 - USA
Tel: +1 862 209-4680
Fax: +1 862 209-4681
orders.na@diagenode.com
info.na@diagenode.com

Last update: September 12, 2014