

## L3MBTL2 polyclonal antibody - Classic

**Cat. No.** C15410238

**Type:** Polyclonal

**Source:** Rabbit

**Lot #:** 40009

**Size:** 25 µl/100 µl

**Concentration:** 1 µg/µl

**Specificity:** Human

**Purity:** Purified by peptide affinity chromatography.

**Storage:** Store at -20°C; for long storage, store at -80°C. Avoid multiple freeze-thaw cycles.

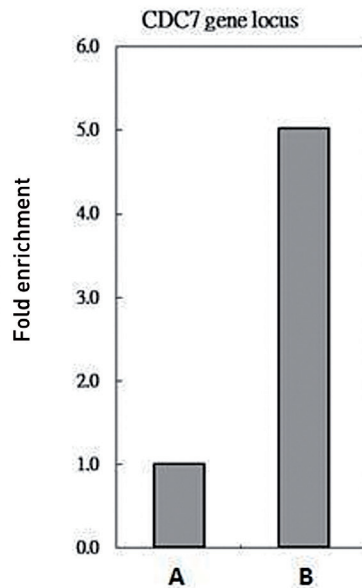
**Precautions:** This product is for research use only. Not for use in diagnostic or therapeutic procedures.

### Applications

	Suggested dilution*	Results
ChIP assay	5 µg/ChIP	Figure 1
Immunoprecipitation	1:500-1:1,000	Figure 2
Western blot	1:500-1:3,000	Figure 3

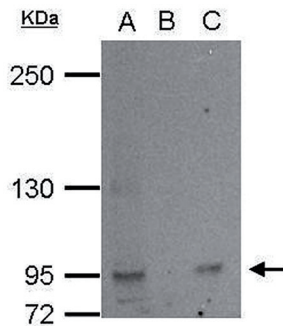
\*Optimal dilutions/concentrations should be determined by the researcher.

### Results



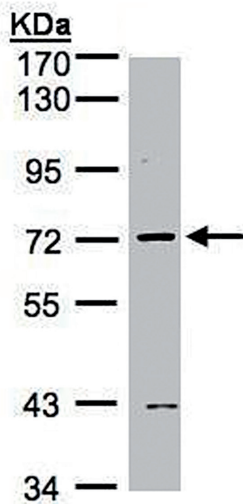
**Figure 1. L3MBTL2 ChIP results**

L3MBTL2 antibody immunoprecipitates L3MBTL2 protein-DNA in ChIP experiments. ChIP Sample: HeLa chromatin extract A. 5 µg preimmune rabbit IgG B. 5 µg of L3MBTL2 antibody. The precipitated DNA was detected by PCR with primer set targeting to CDC7 gene locus.



**Figure 2. L3MBTL2 IP results**

L3MBTL2 antibody immunoprecipitates L3MBTL2 protein in IP experiments. IP Sample: 1000 µg HeLa whole cell lysate/extract A. 40 µg HeLa whole cell lysate/extract B. Control with 2.5 µg of preimmune rabbit IgG C. Immunoprecipitation of L3MBTL2 protein by 2.5 µg of L3MBTL2 antibody. The immunoprecipitated L3MBTL2 protein was detected by western blot with the L3MBTL2 antibody diluted at a 1:1,000.



**Figure 3. L3MBTL2 Western blot results**

Sample: 30 µg MOLT4 whole cell lysate  
7.5% SDS PAGE  
L3MBTL2 antibody diluted 1:1,000