

PRODUCT NAME		
L3MBTL1 polyclonal antibody		
Other names: L3MBTL, L3MBT		
Cat. No. C15310023 (CS-023-100)	Type: Polyclonal	Size: 100 µl
Lot #: 001	Source: Rabbit	Concentration: not determined

Description: Polyclonal antibody raised in rabbit against human L3MBTL1 (lethal 3 malignant brain tumor-like protein), using the N-terminal part of the protein.

Specificity: Human: positive
Other species: not tested

Applications	Suggested dilution	References
Western blotting	1:1,000	Fig 1

Purity: Whole antiserum from rabbit containing 0.05% azide.

Storage: Store at -20°C; for long storage, store at -80°C. Avoid multiple freeze-thaw cycles.

Precautions: This product is for research use only. Not for use in diagnostic or therapeutic procedures.

Last data sheet update: April 9, 2010

Target description

L3MBTL1 (UniProtKB/Swiss-Prot entry Q9Y468) is a member of the polycomb group (PcG) proteins, which function as transcriptional regulators in large protein complexes. In Drosophila, homozygous mutations in the L3MBTL1 gene have been demonstrated to cause brain tumors, identifying L3MBTL1 as a tumor suppressor gene. L3MBTL1 forms a homodimer and interacts with TEL (ETV6). L3MBTL1 probably plays a role in cell proliferation. Overexpression of L3MBTL1 induces multinucleated cells, suggesting that it is required for normal mitosis.

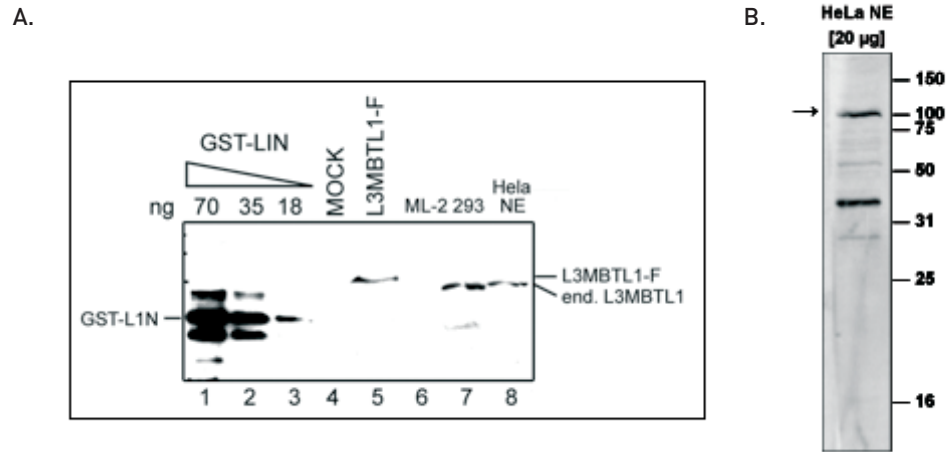


Figure 1

Western blot analysis using the Diagenode antibody directed against L3MBTL1

Figure 1A: Western blot was performed using the Diagenode antibody against L3MBTL1 (cat# CS-023-100) diluted 1:1,000 in TBS-Tween containing 5% skimmed milk. The Western blot contained different amounts of purified L3MBTL1 protein (GST-LIN, lanes 1 - 3), nuclear extracts from mock and FLAG-tagged (L3MBTL1-F) transfected cells (lanes 4 and 5) and nuclear extracts from HeLa (human epithelial carcinoma) (lane 8), HEK293 (human embryonic kidney) (lane 7) and ML-2 (human myelomonocytic leukaemia) cells (lane 6).

Figure 1B: Western blot was performed on nuclear extracts from HeLa cells (HeLa NE, 20 µg) using the Diagenode antibody against L3MBTL1 (cat# CS-023-100) diluted 1:1,000 in TBS-Tween containing 5% skimmed milk. The molecular weight marker (in kDa) is shown on the right; the location of the protein of interest is indicated on the left.