

KDM6A polyclonal antibody

Cat. No. C15410237-100

Type: Polyclonal	Specificity: Human, mouse
Size: 100 µl	Isotype: NA
Concentration: 1.36 µg/µl	Host: Rabbit
Lot No.: 42991	Purity: Purified by peptide affinity chromatography.
Storage buffer: NA	Storage conditions: Store at -20°C; for long storage, store at -80°C. Avoid multiple freeze-thaw cycles.
Precautions: This product is for research use only. Not for use in diagnostic or therapeutic procedures.	

Last Data Sheet Update: September 10, 2014

Description

Polyclonal antibody raised in rabbit against KDM6A (lysine (K)-specific demethylase 6A), using a recombinant protein.

Applications

Applications	Suggested dilution *	References
ChIP assay	5 µg/ChIP	Fig 1
ICC/IF	1:100 - 1:1,000	Fig 4
Immunohistochemistry	1:100 - 1:1,000	Fig 3, 6
Immunoprecipitation	1:100-1:500	Fig 5
Western Blotting	1:500 - 1:3,000	Fig 2

* Optimal dilutions/concentrations should be determined by the researcher.

Target Description

Polyclonal antibody raised in rabbit against KDM6A (lysine (K)-specific demethylase 6A), using a KLH-conjugated synthetic peptide.

Validation Data

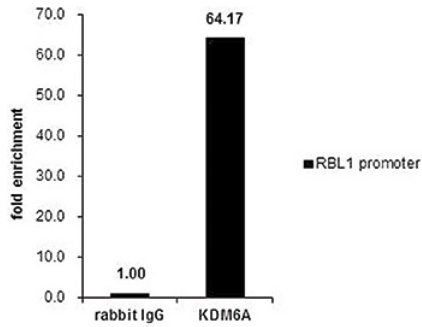


Figure 1. KDM6A ChIP results

ChIP was performed with HeLa chromatin extract and 5 µg of either control rabbit IgG or KDM6A antibody. The precipitated DNA was detected by PCR with primer set targeting to RBL1 promoter.

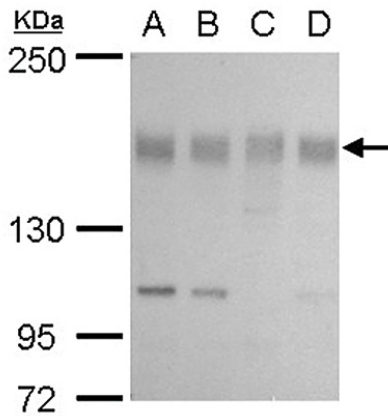


Figure 2. KDM6A WB results

KDM6A antibody detects KDM6A protein by western blot analysis. A. 30 µg U87-MG whole cell extract B. 30 µg SK-N-SH whole cell extract C. 30 µg IMR32 whole cell extract D. 30 µg SK-N-AS whole cell extract 5 % SDS-PAGE KDM6A antibody dilution: 1:500

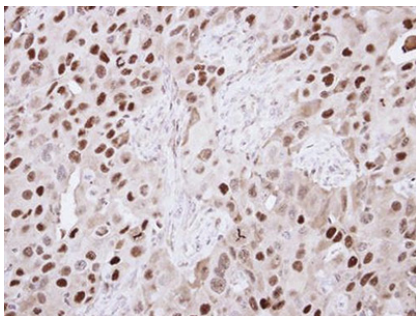


Figure 3. KDM6A IHC results

Immunohistochemical analysis of paraffin-embedded H441 xenograft, using KDM6A antibody at a 1:250 dilution.

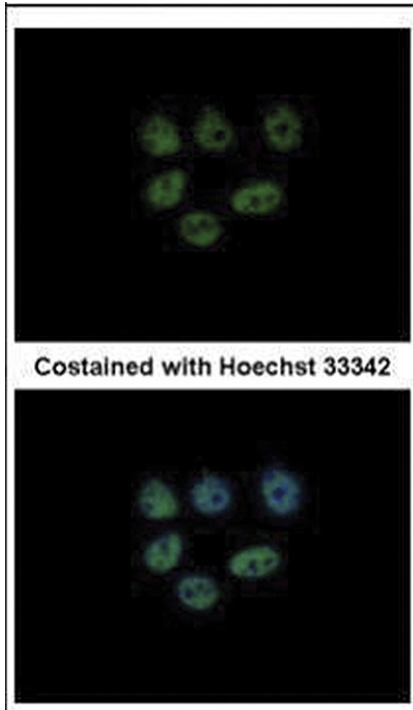


Figure 4. KDM6A IFA results

Immunofluorescence analysis of paraformaldehyde-fixed MCF-7 cells, using KDM6A antibody at a 1:500 dilution. ?

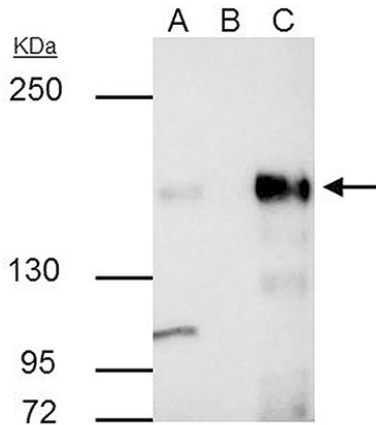


Figure 5. KDM6A IP results

KDM6A antibody immunoprecipitates KDM6A protein in IP experiments. IP samples: SK-N-SH whole cell extract A. 30 μ g SK-N-SH whole cell extract B. Control with 4 μ g of preimmune Rabbit IgG C. Immunoprecipitation of KDM6A protein by 4 μ g KDM6A antibody 5 % SDS-PAGE The immunoprecipitated KDM6A protein was detected by KDM6A antibody diluted 1:500. ?

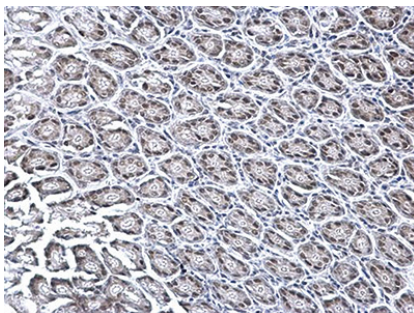


Figure 6. KDM6A IHC results

KDM6A antibody detects KDM6A protein at nucleus on mouse duodenum by immunohistochemical analysis. Sample: Paraffin-embedded mouse duodenum. KDM6A antibody dilution: 1:1,000. ?