

KDM4D polyclonal antibody

Other names: JMJD2D, JHDM3D, FLJ10251

Cat. No. CS-PA063-100

Type: Polyclonal

Source: Rabbit

Lot #: A1007-004

Size: 100 µl

Concentration: not determined

Specificity: Human: positive / Other species: not tested

Purity: Whole antiserum from rabbit containing 0.05% azide.

Storage: Store at -20°C; for long storage, store at -80°C.
Avoid multiple freeze-thaw cycles.

Precautions: This product is for research use only. Not for use in diagnostic or therapeutic procedures.

Description: Polyclonal antibody raised in rabbit against human KDM4D (lysine (K)-specific demethylase 4D) using two KLH-conjugated synthetic peptides containing a sequence from the central region of the protein.

Applications

	Suggested dilution	Results
ELISA	1:200	Fig 1

*The optimal dilution for other applications should be determined by the end user. For WB we suggest starting with a 1:1,000 dilution

Target description

KDM4D (UniProtKB/Swiss-Prot entry Q9H3R0) is a histone demethylase that specifically demethylates 'Lys-9' of histone H3, thereby playing a central role in histone code. KDM4C does not demethylate histone H3 'Lys-4', H3 'Lys-27', H3 'Lys-36' nor H4 'Lys-20'. It demethylates both di- and trimethylated H3 'Lys-9', while it has no activity on monomethylated residues.

Results

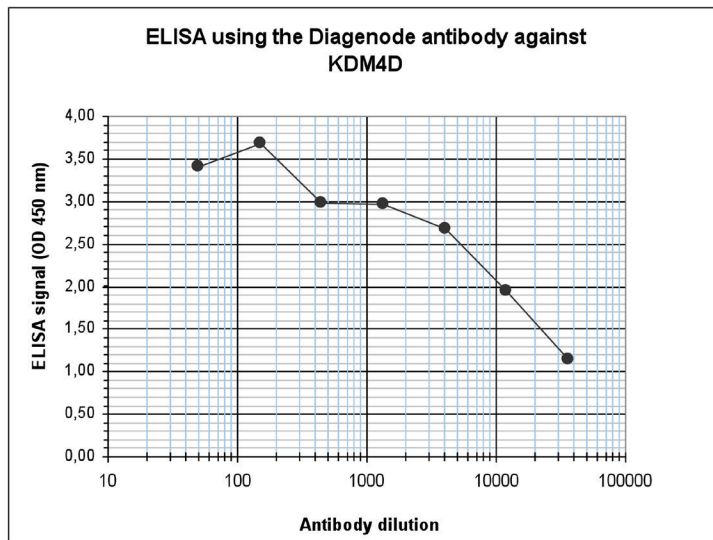


Figure 1. Determination of the antibody titer

To determine the titer of the antibody, an ELISA was performed using a serial dilution of the Diagenode antibody directed against human KDM4D (cat. No. CS-PA063-100). The plates were coated with the peptides used for immunization of the rabbit. By plotting the absorbance against the antibody dilution (Figure 1), the titer of the antibody was estimated to be 1:12,750.

Diagenode sa. BELGIUM | EUROPE

Avenue de l'hôpital,1
Tour GIGA, 3rd Floor
4000 Liège - Belgium
Tel: +32 4 364 20 50
Fax: +32 4 364 20 51
orders@diagenode.com
info@diagenode.com

Diagenode Inc. USA | NORTH AMERICA

400 Morris Avenue, Suite 101
Denville, NJ 07834 - USA
Tel: +1 862 209-4680
Fax: +1 862 209-4681
orders.na@diagenode.com
info.na@diagenode.com

Last update: September 21, 2012