

His tag monoclonal antibody

Cat. No. C15200191 (MAb-191-050)

Type: Monoclonal

Isotype: IgG2b

Source: Mouse

Lot #: 001

Size: 50 µg/ 24 µl

Concentration: 2.1 µg/µl

Specificity: The His monoclonal is a multi-purpose antibody that recognizes His epitopes located in the middle of protein sequences as well as at the N- or C-terminus.

Sensitivity: As low as 1 ng of His-tagged protein can readily be detected In Western Blot.

Purity: Protein A purified monoclonal antibody in PBS (pH 7.2).

Storage: Store at -20°C; for long storage, store at -80°C. Avoid multiple freeze-thaw cycles.

Precautions: This product is for research use only. Not for use in diagnostic or therapeutic procedures.

Applications

	Suggested dilution*	Results
Western blotting	1:1,000 - 1:3,000	Fig 1, 2
IP/ChIP	1:150 - 1:200	
IS	1:500 - 1:1,000	

*Please note that the optimal antibody amount should be determined by the end-user for each specific assay condition.

Product description

Monoclonal antibody raised in mouse against the 6xHis tag (amino acid sequence HHHHHH) using a KLH-conjugated synthetic peptide. The antibody recognizes the Histidine epitope which is one of the most popular protein tags. The Diagenode His tag antibody is extremely specific and allows unambiguous identification and quantitative analysis of His-tagged proteins.

Results

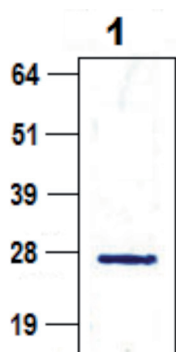


Figure 1. Western blot analysis using the Diagenode monoclonal antibody against the His protein tag

Bacterial extracts containing a His fusion protein were analyzed by Western blot using the Diagenode monoclonal antibody directed against His (Cat. No. MAb-191-050). The antibody was used at a dilution of 1:1,000. The MW marker (in kDa) is shown on the left. The protein of interest (expected size of 27 kDa) is detected as a single band showing the high specificity of the His monoclonal antibody.

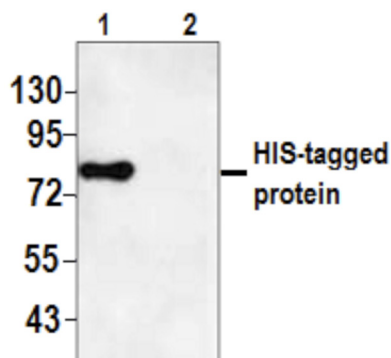


Figure 2. Western blot analysis using the Diagenode monoclonal antibody against the His protein tag

Western blot was performed on whole cell extracts from HEK293 cells transfected with a His-tagged expression vector using the Diagenode monoclonal antibody directed against His (Cat. No. MAb-191-050). The antibody was used at a dilution of 1:1,000. Figure 2 shows the results for cells transfected with a HA-tagged protein (lane 1) and for untransfected cells, used as a negative control (lane 2). The MW marker (in kDa) is shown on the left. A single band is clearly visible in lane 1, but absent in lane 2 showing the high specificity of the His antibody.