

PRODUCT NAME		
HP1 alpha, beta and gamma polyclonal antibody		
Other names: CBX5, 1 and 3		
<b>Cat. No.</b> C15310071 (CS-071-100)	<b>Type:</b> Polyclonal	<b>Size:</b> 100 µl
<b>Lot #:</b> 001	<b>Source:</b> Rabbit	<b>Concentration:</b> not determined

**Description:** Polyclonal antibody raised in rabbit against human HP1 beta (Heterochromatin protein 1 homolog beta), using the full length recombinant GST tagged protein. The antibody also recognizes the alpha and gamma isoforms.

**Specificity:** Human: positive  
Other species: not tested

Applications	Suggested dilution	References
Western blotting	1:1,000	Fig 1

**Purity:** Whole antiserum from rabbit containing 0.05% azide.

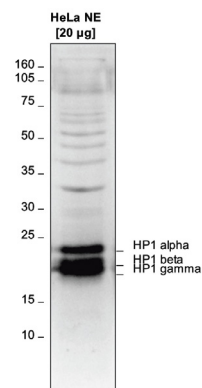
**Storage:** Store at -20°C; for long storage, store at -80°C. Avoid multiple freeze-thaw cycles.

**Precautions:** This product is for research use only. Not for use in diagnostic or therapeutic procedures.

**Last data sheet update:** April 13, 2010

**Target description**

HP1 alpha, beta and gamma (UniProtKB/Swiss-Prot entry P45973, P83916 and Q13185) are components of heterochromatin. They recognize and bind histone H3 tails methylated at 'Lys-9', leading to epigenetic repression. HP1 alpha, beta and gamma also interact with lamin B receptor (LBR) and can contribute to the association of the heterochromatin with the inner nuclear membrane.



**Figure 1**

**Western blot analysis using the Diagenode antibody against hHP1 alpha, beta and gamma**

Western blot was performed on nuclear extracts from HeLa cells (HeLa NE, 20 µg) using the Diagenode antibody against HP1 alpha, beta and gamma (Cat. No. CS-071-100) diluted 1:1,000 in TBS-Tween containing 5% skimmed milk. A molecular weight marker (in kDa) is shown on the left. The location of the three HP1 isoforms is indicated on the right.