

PRODUCT NAME		
HP1 alpha polyclonal antibody		
Other names: HP1 $\alpha$ , CBX5, HP1A		
<b>Cat. No.</b> C15310070 (CS-070-100)	<b>Type:</b> Polyclonal	<b>Size:</b> 100 $\mu$ l
<b>Lot #:</b> 001	<b>Source:</b> Rabbit	<b>Concentration:</b> not determined

**Description:** Polyclonal antibody raised in rabbit against human HP1 alpha (Heterochromatin protein 1 homolog alpha), using the full length recombinant GST tagged protein.

**Specificity:** Human: positive  
Other species: not tested

Applications	Suggested dilution	References
Western blotting	1:1,000	Fig 1

**Purity:** Whole antiserum from rabbit containing 0.05% azide.

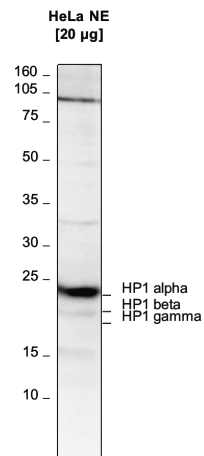
**Storage:** Store at -20°C; for long storage, store at -80°C. Avoid multiple freeze-thaw cycles.

**Precautions:** This product is for research use only. Not for use in diagnostic or therapeutic procedures.

**Last data sheet update:** April 13, 2010

**Target description**

HP1 alpha, beta and gamma (UniProtKB/Swiss-Prot entry P45973) is a component of heterochromatin. It recognizes and binds histone H3 tails methylated at 'Lys-9', leading to epigenetic repression. HP1 alpha also interacts with lamin B receptor (LBR) and can contribute to the association of the heterochromatin with the inner nuclear membrane. Further, HP1 alpha is involved in the formation of a functional kinetochore through interaction with MIS12 complex proteins.



**Figure 1**

**Western blot analysis using the Diagenode antibody against hHP1 alpha**

Western blot was performed on nuclear extracts from HeLa cells (HeLa NE, 20 µg) using the Diagenode antibody against hHP1 alpha (Cat. No. CS-070-100) diluted 1:1,000 in TBS-Tween containing 5% skimmed milk. A molecular weight marker (in kDa) is shown on the left. The location of the three HP1 isoforms of interest is indicated on the right, demonstrating that the antibody only recognizes the alpha isoform.